

Uncertainty Creates Zombie Firms: Implications for Competition Dynamics and Creative Destruction

KEVIN ARETZ
University of Manchester

MURILLO CAMPELLO
Cornell University & NBER

GAURAV KANKANHALLI
University of Pittsburgh

KEVIN SCHNEIDER
University of Cambridge

November 2023

Abstract

We show how the threat of “uncertainty-induced zombification” — creditors’ willingness to keep their distressed borrowers alive when faced with uncertainty — shapes various industry dynamics. Under a real options framework, we demonstrate that healthy firms become reluctant to invest and disinvest in anticipation that uncertainty induces creditors to convert defaulting rival firms into zombies. We validate our theory using dynamic, industry-specific estimates of uncertainty-induced zombification together with loan contract-level data. Empirically, higher uncertainty-led rival zombification prompts unlevered firms to reduce their investment, disinvestment, and employment; as well as establishment-level openings and closures (intensive and extensive margins are affected). These hard-to-reverse decisions are modulated by the anticipation of the extent to which distressed rivals will be subsidized by their creditors. Critically, they depress healthy firms’ long-run sales revenues, profits, and market values. Our findings highlight a novel channel through which uncertainty influences firms’ capital accumulation, performance, and outcomes.

KEYWORDS: Uncertainty, zombie firms, investment, disinvestment, employment

JEL CLASSIFICATION: G31, G32, D22, D25

1 Introduction

Large-scale shocks such as the Japanese real estate crash, the Global Financial Crisis, and the European sovereign debt crisis have led banks to extend credit to insolvent firms, a phenomenon commonly referred to as “zombie lending” (see, e.g., Caballero et al. (2008), Acharya et al. (2019, 2022, 2023), and Chopra et al. (2021)).¹ Zombie lending emerges because the high level of uncertainty that accompanies economic shocks can make it optimal for banks to speculate on the recovery of defaulting borrowers. Prior work has shown that the presence of zombies may distort firms’ incentives to invest and innovate (see McGowan et al. (2018), Schmidt et al. (2020), and Acharya et al. (2021)). No existing study has modeled and empirically identified the dynamics connecting uncertainty, the expectation — and subsequent realization — of rival zombification, and the optimal real and financial decisions of other firms in an industry.

We theoretically demonstrate and empirically verify that healthy firms’ capital allocation decisions are shaped by the *expectation* of zombification in their industries (rather than its *ex-post realization* alone). The realization of such expectations is, however, highly uncertain as it is unclear (i) if and when distressed firms will default; (ii) whether banks will convert defaulting firms into zombies; and (iii) how long zombies will be able to stay afloat. We show how the “threat of zombification” alone can induce healthy firms to optimally delay their costly-to-reverse decisions, which bears long-term consequences to their industries. We build the theoretical foundations for this mechanism using a real options model of an industry with levered and unlevered firms that compete based on output. The model implies that higher potential for zombification makes the unlevered firms reluctant to (both) expand and contract their capacity, generating multifaceted real options effects across their industries. Notably, the economic mechanism we uncover is distinct from the realized-zombification effects found in other work (e.g., Caballero et al. (2008) and Acharya et al. (2021)). This happens because all economic agents in our model — firms and lenders — are forward looking. In order to validate our theoretical predictions, we use data from

¹“Zombification” refers to the creditor-borrower relationship that evolves into a situation where creditors choose to support financially distressed firms with subsidized debt (see Caballero et al. (2008)).

U.S. public firms as well as near-universal private and public firms from the global shipping industry to show that the threat of uncertainty-induced zombification prompts healthy firms to reduce their investment and disinvestment, negatively affecting their long-run performance.

We establish the microeconomic underpinnings for our results by laying out a real options model of an industry in which a continuum of levered and unlevered firms use their capacity to produce and sell output at a price driven by demand and aggregate output. Demand in this industry follows a two-state Markov-switching geometric Brownian motion (GBM) with a low growth–high uncertainty state (“recession”) and a high growth–low uncertainty state (“expansion”). If the levered firms default on their debt in the recession state, their creditors may find it optimal to roll over the debt — converting the defaulting firms into zombie firms rather than liquidating them. This zombification motive arises as high uncertainty in recessions, often combined with government guarantees on creditors’ debt, creates an incentive to speculate on the recovery of the defaulting borrowers. It follows that the continued presence of zombie firms keeps output prices low, hindering the creative destruction process — investment in new capital and disinvestment of old capital — necessary for the unlevered firms to recover.

The novel and unique aspect of our theory is that unlevered firms rationally anticipate creditors’ zombification incentives and accordingly adjust their costly-to-reverse real decisions. Specifically, a greater threat of uncertainty-induced zombification prompts those firms to delay their investment and disinvestment. There are two mechanisms underlying these results. The first is that zombie firms depress the output price, rendering all capacity units less profitable (“first-moment effect”). The second is that there is uncertainty about when and how many zombie firms may eventually emerge (“second-moment effect”). While both effects lead unlevered firms to delay their investment, the second effect dominates the first under realistic parameter values such that they also delay their *disinvestment*. Intuitively, when there is high uncertainty about the future arrival of zombies in the industry, unlevered firms optimally retain their capacity longer to avoid irreversible costs associated with reacquiring capacity when only relatively

few rival firms become zombies. Once the zombification uncertainty is resolved, a greater share of zombie firms induces unlevered firms to delay investing but to speed up disinvesting.

We evaluate the predictions of our model using a large dataset on firms' real decisions and long-run performance from a variety of sources. As a first step, we estimate firms' time-varying expectations of uncertainty-induced zombification in their industries. Our main empirical specifications relate these estimates to various outcomes capturing firms' investment, disinvestment, and performance while controlling for other observed and unobserved determinants of those outcomes. To do so, we first follow Acharya et al. (2019, 2022) and Altman et al. (2022) in defining an *existing zombie firm* either as (1) a firm with an interest coverage ratio below one and an Altman's Z-score below zero ("standard zombie"); or (2) a firm satisfying those two conditions but also receiving subsidized credit ("credit-subsidized zombie").² Using Dealscan contract-level data, we validate our zombie definitions, showing that under either definition, loans to zombie firms attract lower spreads, feature fewer covenants, are less often secured, and involve fewer lenders relative to loan contracts with comparable firms in the industry.

We next estimate the *expectation of uncertainty-induced zombification* in an industry. We do so based on industry-specific rolling-window panel regressions of a zombie-firm indicator variable on lagged proxies for uncertainty, multiple control variables, and a set of fixed effects, calculating the estimate as the end-of-window fitted value based on the uncertainty proxies. Since a wide range of uncertainty proxies capturing financial, political, and real uncertainty strongly predict zombification, we use as our main uncertainty metric either the first or the first two principal components from eight common uncertainty measures drawn from prior studies (see Jurado et al. (2015), Baker et al. (2016), and Cascaldi-Garcia et al.'s (2023) survey article).

Our main empirical tests delve into the real capacity investment and employment decisions of healthy (i.e., non-zombie) U.S. public firms. In particular, we show that those firms curb their investment into fixed assets and M&As in response to greater expected uncertainty-induced zombification in their industries. They also cut back on their disinvestment, as measured by the

²Following Caballero et al. (2008), we assume that a firm receives subsidized credit when its interest rate lies below the theoretically most favorable rate for that firm given its circumstances.

sale of property, plant, and equipment. Going further, we use establishment-level data to show that these firms curtail their openings and closures of establishments as well as employment in response to that threat. The documented effects are economically significant. Using one principal component to estimate the threat of zombification, we find that a one-standard-deviation increase in the estimated threat is associated with a 1.8 percentage-point lower establishment opening rate, about 12% of the mean rate (15%). Remarkably, we also demonstrate that the effects of expected zombification are typically stronger than those of existing zombification, highlighting that zombie firms trigger important real distortions long before they eventually materialize in industries. Since a greater threat of zombification can, in contrast to other forms of uncertainty, only imply negative future news, we also show that the healthy firms suffer from decreases in their sales growth, profitability, and total market value but increases in their capacity overhang (the extent to which their installed capacity deviates from the optimal level) as the zombification threat materializes.

For granular context, we next examine the capital allocation decisions of private and public firms in the global shipping industry. The shipping industry is well-suited for tests of our theoretical predictions as media and industry reports frequently emphasize how the sector is particularly prone to zombification.³ Moreover, shipping firms can be characterized as competing on output in segmented vessel-size- and route-based markets, which matches well with our model structure (Stopford (2009)). Finally, our detailed data on the fleets, new ship orders, ship demolitions, and secondary ship market transactions allow us to track all margins of shipping firms' investment and disinvestment decisions at the *asset level*, providing a uniquely insightful view into how firms adjust their asset base in response to uncertainty-induced zombification.

Consistent with our theory, we find that healthy firms curb their investment into (and demolition of) shipping vessels in response to the threat of zombification in their various markets. The estimated effects are of greater economic significance in this setting. A one-standard-deviation

³For example, see "South Korea Takes Aim at Zombie Companies," *Financial Times*, November 25, 2015, "People are Afraid These 'Zombie Ships' are the First Sign of Global Economic Collapse," *The Telegraph*, January 20, 2016, and "Zombie Companies Return to Shipping," *Lloyd's List*, April 26, 2017.

increase in the threat of zombification is associated with a reduction in ship investment rates by three percentage points, around 24% of the baseline rate (13%). Notably and confirming our theory, these dynamics are more pronounced among new ship orders and ship demolitions (in contrast to used ship purchases and sales), suggesting that zombification fears disproportionately impact firms' costlier-to-reverse decisions.

This paper adds to a growing literature on the spillover effects of zombie firms onto other firms in the economy. Caballero et al. (2008) show that zombie firms induce healthy firms to curb their investment into capital and labor in Japan during the “lost decade” (the 1990s), a finding that has been confirmed in various other contexts (see, e.g., McGowan et al. (2018), Acharya et al. (2019), and Schmidt et al. (2020)). Critically, Acharya et al. (2021) report that the negative externalities of zombie firms arise as their presence depresses output prices and raises input costs, lowering the sales growth, markups, and profitability of healthy same-industry firms. Relative to these works, our study establishes an unexplored channel by which forward-looking healthy firms not only react to existing zombies but also — and seemingly more pronouncedly — to the *threat of uncertainty-induced zombification* in their industries by cutting back on various margins of their capital accumulation and capacity utilization decisions.

We further contribute to the literature on how uncertainty shapes corporate real decisions and aggregate economic outcomes. Bernanke (1983) and McDonald and Siegel (1986) are among the earliest theoretical works to show that it is optimal to delay costly-to-reverse decisions in the presence of high uncertainty. On the empirical front, a host of studies including Leahy and Whited (1996), Bloom (2009), Kellogg (2014), Basu and Bundick (2017), and Kumar et al. (2023), among others, show that high uncertainty depresses corporate investment and that these effects are amplified by the costs of irreversibility (Kim and Kung (2017) and Campello et al. (2023)) and financial frictions (Alfaro et al. (2023)). Our work relates to these studies by highlighting that the threat of zombification contributes significantly to the impact of overall uncertainty on economic activity.

The remainder of the paper proceeds as follows. In Section 2, we set up a real options model of an industry in which forward-looking healthy firms optimally adapt their policies to the threat of zombification. Section 3 discusses our data and methodology. In Section 4, we offer our more general piece of evidence based on U.S. public firms. In Section 5, we present analogous, granular evidence based on public and private firms from the shipping industry. Section 6 concludes. We offer theoretical derivations and more detailed variable definitions in the appendix.

2 Theoretical Framework

We lay out a real options model in which heightened uncertainty incentivizes creditors to keep defaulting levered firms artificially alive, turning them into zombie firms in order to speculate on their recovery. The model further demonstrates that healthy firms in the same industry rationally anticipate lenders' zombification incentives, inducing them to delay costly-to-reverse real decisions, negatively affecting their future performance. We offer theoretical derivations, closed-form solutions, and further technical details in Appendix A.1.

2.1 Set Up

2.1.1 Economic Assumptions

Consider an industry populated by a number of infinitely small firms with mass n operating over a continuous and infinite horizon indexed by $t \in [0, +\infty)$. The firms are endowed with an identical amount of capacity \bar{K} per firm unit, with each capacity increment producing one unique-output-good increment per firm and time unit when the firm switches on the increment. Switching on the capacity increments is costless and instantaneous, and the cost of producing Q output units in an instant is $C(Q) = \frac{1}{2}\kappa Q^2$, where $\kappa \geq 0$ is a constant parameter. Following the zero-leverage-firm literature (e.g., Strebulaev and Yang (2013)), we assume that n_U of the n mass are all-equity financed firms ("unlevered firms"), whereas $n_L = n - n_U$ are

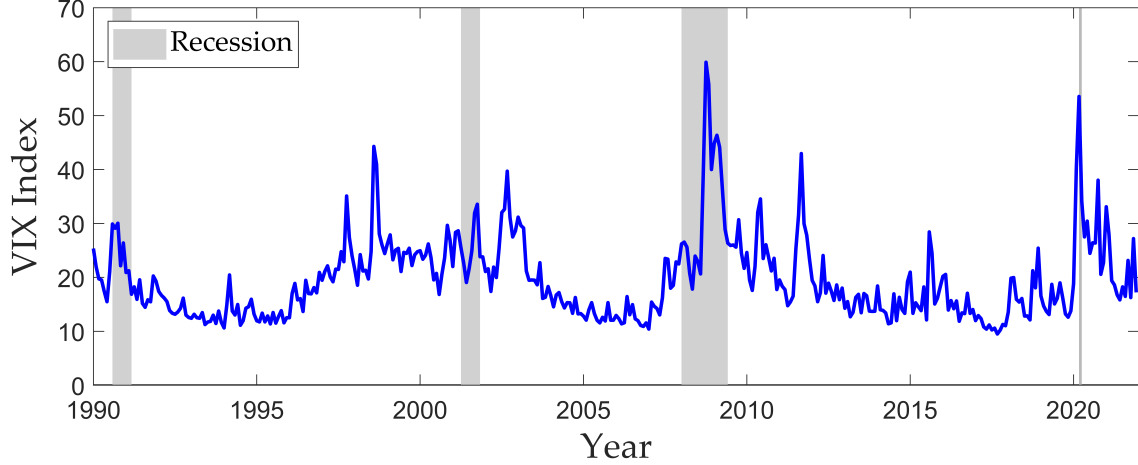


Figure 1. The figure plots the VIX index realization over the sample period from the start of 1990 to the end of 2021. The grey shaded areas are NBER recession periods.

equity-and-debt financed firms (“levered firms”). The levered firms may exist because adverse idiosyncratic shocks forced those firms to raise debt in the past to continue operating.

Firms sell their output at a stochastic price governed by demand and the aggregate output produced by all firms in the industry. We assume that demand, θ , obeys:

$$d\theta = \alpha_X \theta dt + \sigma_X \theta dB, \quad (1)$$

where α_X and σ_X are the time-varying demand drift rate and volatility, respectively, and B is a Brownian motion. Conversely, X is an independent continuous-time two-state Markov switching process with state space $\{H, L\}$ specifying the state-specific (constant) demand drift rate and volatility. We follow the VIX-based evidence in Figure 1 and Bloom et al. (2018) in assuming that the drift rate and volatility are negatively correlated, implying $\alpha_H > \alpha_L$ and $\sigma_H < \sigma_L$. As such, we can conveniently interpret the H (L) state as an expansion (recession) state. The likelihood of switching into a new state or staying in the current state is given by the standard

transition probability matrix:

$$\begin{pmatrix} \underbrace{1 - p_H dt}_{=\text{Prob}[X=L|L]} & \underbrace{p_H dt}_{=\text{Prob}[X=H|L]} \\ \underbrace{p_L dt}_{=\text{Prob}[X=L|H]} & \underbrace{1 - p_L dt}_{=\text{Prob}[X=H|H]} \end{pmatrix}, \quad (2)$$

where p_H and p_L are constant parameters in $[0, 1]$. Intuitively, p_H and p_L are the conditional probabilities of switching from the recession to the expansion state and into the opposite direction over a dt interval, respectively, such that these parameters control the persistence of the states. Using the parameter values in the caption, Figure 2 plots a sample path from stochastic process in (1). Similar to us, Guo et al. (2005), Bloom (2009), Bhamra et al. (2010), Bhamra and Shim (2017), Bloom et al. (2018), and Alfaro et al. (2023) use such a regime switching process to study various real and financial corporate decisions along business cycle fluctuations.

Given the demand value θ , the stochastic price at which each of the firms sell their output dynamically is determined by the downward-sloping demand curve:

$$P = \theta - \gamma \left(\int_{u=0}^{n_U} Q_{U,u} du + \int_{v=0}^{n_L} Q_{L,v} dv \right), \quad (3)$$

where $Q_{U,u}$ and $Q_{L,v}$ are the one-firm-unit amounts of output produced by the unlevered and the levered firms, respectively, and $\gamma > 0$ is the (constant) slope of the demand function.

2.1.2 Financial Assumptions

We now characterize how levered firms serve their debt, the bounded payoffs to the creditors, and the debt renegotiation option whose exercise can turn defaulting firms into zombie firms. We assume that the levered firms are contractually obligated to first service their debt in each instant, requiring them to pay a constant and continuous coupon payment equal to $c > 0$ per firm and time unit to creditors. We assume that levered firms cannot completely insulate

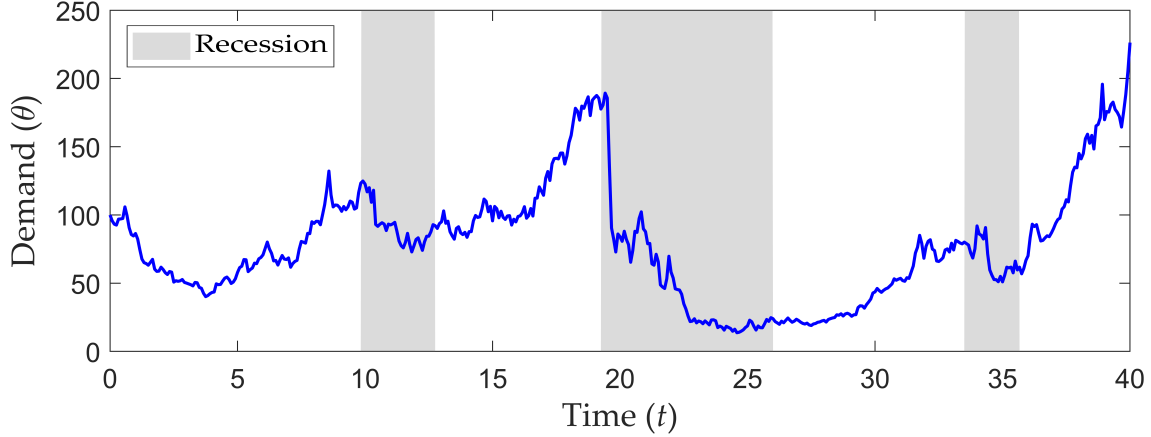


Figure 2. The figure plots a demand process realization. The stochastic process parameters are: $\alpha_H = 0.08$, $\alpha_L = -0.04$, $\sigma_H = 0.20$, $\sigma_L = 0.40$, $p_H = 0.30$, and $p_L = 0.10$. The grey shaded areas are recession states.

themselves from debt obligations by way of saving cash or hedging. As such, the levered firms default when their operating profits drop below the coupon payment.

Upon default, creditors can either roll over the debt or liquidate the defaulting firms. When choosing to rollover, the debt contract transforms into a payment-in-kind instrument. Under this arrangement, defaulting firms pay “whatever they can” until they become able to pay a higher coupon $c^* > c$ to compensate for the missed payments (see, e.g., Skrastins (2021) and Gryglewicz and Mayer (2023)). In essence, creditors offer temporarily subsidized debt to the defaulting firms, but with the chance of receiving higher payments later.

When providing loans, creditors can rely on government guarantees for subsidized debt as in Acharya et al. (2021). As a result, creditors know that renegotiated payments can never drop below $b < c$ since, if they do, creditors are bailed out by the government. Intuitively, bailouts make the renegotiated debt instrument more call-option-like, incentivizing creditors to speculate on the recovery of defaulting firms and to turn those firms into zombie firms in the high-uncertainty (recession) state.

Finally, when choosing to liquidate defaulting firms, creditors receive an uncertain residual value, L_X . We take that the log residual value of each firm is distributed as $N(\mu_{L,X}, \sigma_{L,X}^2)$, whose mean, $\mu_{L,X}$, is higher in booms than recessions whereas its variance, $\sigma_{L,X}^2$, is higher in

recessions than booms. Notably, the additional uncertainty embedded in the liquidation value of firm assets ensures that creditors only convert a fraction of defaulting firms into zombies.

2.2 Optimal Policies & Valuation

2.2.1 Optimal Production Policies

We can write the profits of the i^{th} unlevered (levered) firm per firm and time unit, $\Pi_{U,i}$ ($\Pi_{L,i}$), as:

$$\Pi_{Y,i} = PQ_{Y,i} - \frac{1}{2}\kappa Q_{Y,i}^2, \quad (4)$$

where $Y \in \{U, L\}$, P is given by Equation (3), and $Q_{Y,i}$ is the amount of output per firm unit firm i chooses to produce in the current instant, satisfying $0 \leq Q_{Y,i} \leq \bar{K}_{Y,i}$. Firms choose their output amounts dynamically to maximize profits, so we have the first-order condition:

$$\theta - \gamma \left(\int_{u=0}^{n_U} Q_{U,u} du + \int_{v=0}^{n_L} Q_{L,v} dv \right) - \gamma Q_{Y,i} - \kappa Q_{Y,i} = 0, \quad (5)$$

where the sum of the integrals on the left-hand side is the aggregate amount of output produced by all firms. Since all unlevered (levered) firms are identical, we have $\int_{u=0}^{n_U} Q_{U,u} du = n_U Q_{U,i}$ ($\int_{v=0}^{n_L} Q_{L,v} dv = n_L Q_{L,i}$). Plugging back into first-order condition (5) and solving for $Q_{U,i}$ and $Q_{L,i}$, we obtain $Q_{U,i} = Q_{L,i} = \frac{\theta}{(n_U + n_L + 1)\gamma + \kappa}$, which is optimal when both types of firm have sufficient capacity to produce that amount of output. When the levered (unlevered) firms are capacity constrained, they produce at their maximum capacity and the others produce at $\frac{\theta - \gamma n_L \bar{K}_L}{(n_U + 1)\gamma + \kappa}$ ($\frac{\theta - \gamma n_U \bar{K}_U}{(n_L + 1)\gamma + \kappa}$). When both types are capacity-constrained, they both produce at their maximum capacity.

2.2.2 Optimal Creditor Policies

Creditors optimally roll over the debt of a defaulting levered firm (and thus turn the firm into a zombie firm) whenever the value of the rolled-over debt exceeds the firm's liquidation value;

else they liquidate the firm. Relying on the demand value θ at which the firm's operating profits exactly match the coupon payment, Z , Proposition 1 gives the closed-form solution for the value of the rolled-over debt upon a default occurring in state X , $\mathcal{C}(Z, X)$:

Proposition 1. *The rolled-over debt contract value upon a default in state X , $\mathcal{C}(Z, X)$, is:*

$$\mathcal{C}(\theta, X) = \mathfrak{C}(\theta, X; c^*) + \frac{b}{r} - \mathfrak{C}(\theta, X; b), \quad (6)$$

where for a general constant $a > 0$:

$$\mathfrak{C}(Z, X; a) = c_{1,X}Z^{\beta_1} + c_{2,X}Z^{\beta_2} + c_{0,X}Z^2, \quad (7)$$

$c_{0,X}$ determines the value to the creditor from receiving the levered firm's entire operating profits forever, $c_{1,X}$ and $c_{2,X}$ determine the value to the levered firm of being required to pay only the constant a in states in which its operating profits exceed that level, and β_1 and β_2 are the positive roots of a fourth-order polynomial obtained from the appropriate valuation equations.

Proof. See Appendix A.1. □

The value of the rolled-over debt in Equation (6) has two components. First, $\mathfrak{C}(\theta, X; c^*)$ is the present value of perpetually receiving the operating profits of a levered firm, capped at the renegotiated coupon c^* . The term $\frac{b}{r} - \mathfrak{C}(\theta, X; b)$ adds the present value of a potential bailout, ensuring that creditors receive a payment of at least b per period.

As creditors observe the (firm-specific) liquidation value, L_X , upon a default, they roll over the debt if and only if $\mathcal{C}(Z, X) \geq L_X$; else they liquidate the defaulting firm.

2.2.3 Optimal Capacity Policies & Valuation of the Unlevered Firms

We next derive the dynamic capacity choices and the valuation of the unlevered firms, which are the main focus of our paper. We allow the unlevered firms to adjust their capacity \bar{K} upward (investment) and downward (disinvestment), but assume for simplicity that levered firms

operate with fixed capacity due to constraining covenants. As such, we can write the value of an arbitrary unlevered firm (scaled to a unit mass), W , as the following sum:

$$W = D(\theta, X) + V(\theta, X) + F(\theta, X), \quad (8)$$

where $D(\theta, X)$, $V(\theta, X)$, and $F(\theta, X)$ are the values of the disinvestment options, assets-in-place, and growth options of the firm, respectively. We first compute $V(\theta, X)$, and then $D(\theta, X)$ and $F(\theta, X)$.

We find the value of the assets-in-place, $V(\theta, X)$, through valuing the incremental capacity units of the firm (see, e.g., Pindyck (1988) and Aretz and Pope (2018)). To do so, we first recognize that the capacity unit able to produce the K^{th} increment yields a profit of $\theta - ((n_U + 1)\gamma + \kappa)K - n_L\gamma \min\{\bar{K}_L, K\}$ (zero) per time unit when switched on (off) before some of the levered firms exit.⁴ Given that, the firm switches on the unit if demand θ exceeds $\theta_Z^P(K) \equiv ((n_U + 1)\gamma + \kappa)K + n_L\gamma \min\{\bar{K}_L, K\}$. Conversely, that same unit earns a profit of $\theta - ((n_U + 1)\gamma + \kappa)K - \psi(X)n_L\gamma \min\{\bar{K}_L, K\}$ (zero) per time unit when switched on (off) after some of the levered firms exit, where $\psi(X)$ is the share of levered firms staying upon a default in state X .⁵ Given that, the firm now switches on the unit if θ exceeds $\theta^P(K) \equiv ((n_U + 1)\gamma + \kappa)K + \psi(X)n_L\gamma \min\{\bar{K}_L, K\}$.

Proposition 2 gives the value of the incremental capacity unit able to produce the K^{th} output increment conditional on creditors' optimal liquidation strategy and before the levered firms default on their debt repayments.

⁴The minimum operator ensures that if the levered firms' capacity \bar{K}_L is below the capacity increment K , then only their capacity up to \bar{K}_L (and not K) depresses the output price.

⁵Since all levered firms default simultaneously, and there is an infinite number of them, a strong law of large numbers implies that we always see a constant fraction of those firms leave (specifically those for which the liquidation value realization lies above the value of the renegotiated debt).

Proposition 2. *The value of an unlevered firm's option to produce output increment K under the creditor's optimal liquidation policy before the levered firms' default is:*

$$\Delta V(\theta, X; K) = \Delta \mathcal{V}(\theta, X; \theta_Z^P(K)) + (\Delta \mathcal{V}(Z, X; \theta^P(K)) - \Delta \mathcal{V}(Z, X; \theta_Z^P(K))) (q_{3,X} \theta^{\beta_3} + q_{4,X} \theta^{\beta_4}), \quad (9)$$

where $\Delta \mathcal{V}(\theta, X; \theta_Z^P(K))$, the “perfect zombification” firm value, is:

$$\Delta \mathcal{V}(\theta, X; \theta_Z^P(K)) = \begin{cases} b_{1,X} \theta^{\beta_1} + b_{2,X} \theta^{\beta_2} & \text{if } \theta \leq \theta_Z^P(K), \\ b_{3,X} \theta^{\beta_3} + b_{4,X} \theta^{\beta_4} + b_{0,X} \theta - \frac{\theta_Z^P}{r} & \text{if } \theta \geq \theta_Z^P(K), \end{cases} \quad (10)$$

where $b_{0,X}$ is value from the option producing and selling output forever; $b_{1,X}$ to $b_{4,X}$ are the values of the real options to switch on and off the option, $q_{3,X}$ and $q_{4,X}$ are the value from obtaining one dollar upon a default; and $\beta_1, \beta_2, \beta_3$, and β_4 are the roots of a fourth-order polynomial obtained from the appropriate valuation equations.

Proof. See Appendixes A.2 and A.4. □

Intuitively, $\Delta \mathcal{V}(\theta, X; \theta_Z^P(K))$ is the capacity unit's value when creditors never liquidate defaulting firms and all levered firms stay in the economy forever. Since in that case the capacity unit's profitability never jumps up upon a default, its value aligns with that in a standard Pindyck (1988) model with a state-switching demand process. The upshot is that the $b_{0,X} \theta - \frac{\theta_Z^P}{r}$ term in Equation (10) is the value from the unit producing output forever, while the others adjust that value for the real option to switch on and off the unit.

The second summand on the right-hand side of Equation (9) corrects the capacity unit's value for the possibility that creditors liquidate the fraction $1 - \psi(X)$ of defaulting levered firms in expansion or recession states. To better understand that term, recall that the capacity unit's production cost is (the higher) $\theta_Z^P(K)$ before the levered firms' exit but (the lower) $\theta^P(K)$ afterwards. Thus, the $\Delta \mathcal{V}(Z, X; \theta^P(K)) - \Delta \mathcal{V}(Z, X; \theta_Z^P(K))$ term reflects the upward jump in the capacity unit's value due to the downward jump in its production costs induced through the

levered firms' exit. Conversely, since $q_{3,X}\theta^{\beta_3} + q_{4,X}\theta^{\beta_4}$ is the present value of one dollar received upon the levered firms defaulting, the entire correction term is the present value of the upward jump in the capacity unit's value upon the levered firms defaulting before the defaults occur.

We can now derive the value of the firm's entire assets-in-place, $V(\theta, X)$, from:

$$V(\theta, X) = \int_0^{\bar{K}} \Delta V(\theta, X; K) dK. \quad (11)$$

We next value the options to invest into and disinvest the capacity unit on the K^{th} output increment. To do so, we assume an installation cost of I and a disinvestment gain of d , both per capacity unit and with $I > d$. Proposition 3 then gives the values of those options.

Proposition 3. *The value of an unlevered firm's option to acquire the option to produce output increment K at a unit cost of I under the creditor's optimal liquidation strategy is:*

$$\Delta F(\theta, X; K) = \begin{cases} a_{1,X}\theta^{\beta_1} + a_{2,X}\theta^{\beta_2} & \text{if } \theta \leq \theta_X^*, \\ \Delta V(\theta, X; K) + \Delta D(\theta, X; K) - I & \text{if } \theta \geq \theta_X^*, \end{cases} \quad (12)$$

while the value of the unlevered firm's option to disinvest that same incremental option at a unit gain of d under the creditor's optimal liquidation strategy is:

$$\Delta D(\theta, X; K) = \begin{cases} \Delta F(\theta, X; K) - \Delta V(\theta, X; K) + d & \text{if } \theta \leq \theta'_X, \\ d_{3,X}\theta^{\beta_3} + d_{4,X}\theta^{\beta_4} & \text{if } \theta \geq \theta'_X, \end{cases} \quad (13)$$

where $a_{1,X}$ and $a_{2,X}$ ($d_{3,X}$ and $d_{4,X}$) determine the value of the investment (disinvestment) option, and θ_X^* and θ'_X are the investment and disinvestment threshold, respectively.

Proof. See Appendix A.5. □

The lower line in Equation (12) shows that if demand θ rises above the threshold θ_X^* the firm exercises the growth option, paying the cost I to acquire the option to produce (value:

$\Delta V(\theta, X; K)$) plus the option to sell off that option again later (value of $\Delta D(\theta, X; K)$). Conversely, the upper line in Equation (13) reveals that if θ falls below θ'_X , the firm exercises the disinvestment option, giving up the option (value of $\Delta V(\theta, X; K)$) but earning the sales gain d and reacquiring the growth option on that option to produce (value of $\Delta F(\theta, X; K)$). Finally, the other lines capture the values obtained from option exercises in the future.

One can now derive the value of all the firm's investment options, $F(\theta, X)$, and the value of all its disinvestment options, $D(\theta, X)$, from:

$$F(\theta, X) = \int_{\bar{K}}^{\infty} \Delta F(\theta, X; K) dK \quad \text{and} \quad D(\theta, X) = \int_0^{\bar{K}} \Delta D(\theta, X; K) dK. \quad (14)$$

2.3 Model Implications & Insights

We now spell out the implications of our model. Specifically, we discuss how the threat of uncertainty-induced rival zombification shapes the dynamic capacity choices and real performance of unlevered firms in a (potentially) zombified industry. We also contrast the impact of expected zombification with that of existing zombification using simulations of our model.

Throughout this section, we use the demand path and parameter values in Figure 2 ($\alpha_H = 0.08$, $\alpha_L = -0.04$, $\sigma_H = 0.20$, $\sigma_L = 0.40$, $p_H = 0.30$, and $p_L = 0.10$), which are similar to the estimates from Bhamra et al. (2010) and Bloom et al. (2018) and imply a long-run probability of being in an expansion (recession) of 0.75 (0.25). We choose a demand slope (γ) of 0.12, a production cost parameter (κ) of 0.10, an investment cost (I) of ten, and a sales gain (d) of seven. We set the expected return of a demand mimicking portfolio (μ) to 11% and the risk-free rate of return (r) to 2%. We choose an initial (c) and renegotiated (c^*) coupon payment of two and five, respectively. The bailout threshold (b) is 0.1. The expectation, $\mu_{L,H}$, and volatility, $\sigma_{L,X}$, of the natural log of the liquidation value are $\ln(20)$ and 3.00 in the expansion and $\ln(5)$ and 6.00 in the recession state, all respectively.

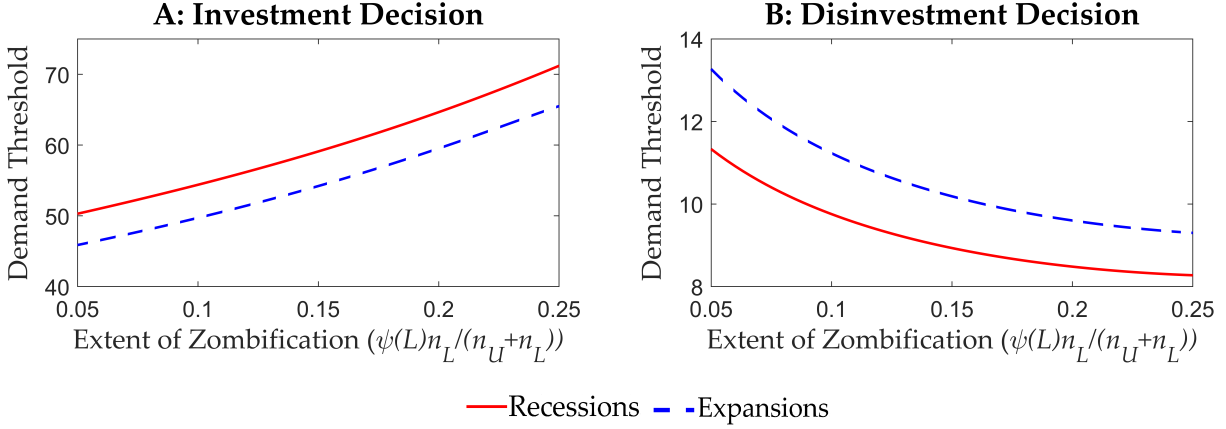


Figure 3. The figure plots the investment (Panel A) and disinvestment (Panel B) triggering demand thresholds for the capacity unit able to produce the $K = 10$ output increment against the proportion of expected zombie firms in an industry $\left(\frac{\psi(L)n_L}{n_U+n_L}\right)$. Dashed blue (solid red) lines show those thresholds in the expansion (recession) state. We describe the basecase parameters in Section 2.3.

2.3.1 Rival Zombification & Capacity Choices

Figure 3 shows how the threat of rival zombification conditions the decision of an arbitrary unlevered firm to invest into (Panel A) or disinvest (B) the capacity unit able to produce the $K = 10$ output increment separately in the expansion (blue lines) and the recession (red lines) state. To do so, we plot the investment and disinvestment triggering demand thresholds for that unit against the proportion of expected zombie firms in the industry $\left(\frac{\psi(L)n_L}{n_U+n_L}\right)$, ranging from 5% up to 25% (see prevalence of zombification in Acharya et al. (2022)).

The figure suggests that a greater threat of rival zombification induces the unlevered firms to delay their investment and disinvestment. In particular, while the investment thresholds in Panel A increase with the proportion of levered firms (so that demand has to rise to a higher level before the investment option is exercised), the disinvestment thresholds in Panel B decrease with that proportion (so that demand has to drop to a lower level before the disinvestment option is exercised). The reason is that the threat of rival zombification exerts two effects on the unlevered firms. First, it more strongly depresses the output price, rendering all available capacity units less profitable and inducing the unlevered firms to delay their investment but to speed up their disinvestment (“first-moment effect”). Second, however, it also generates greater benefits from waiting to see whether some of the levered firms will default and leave

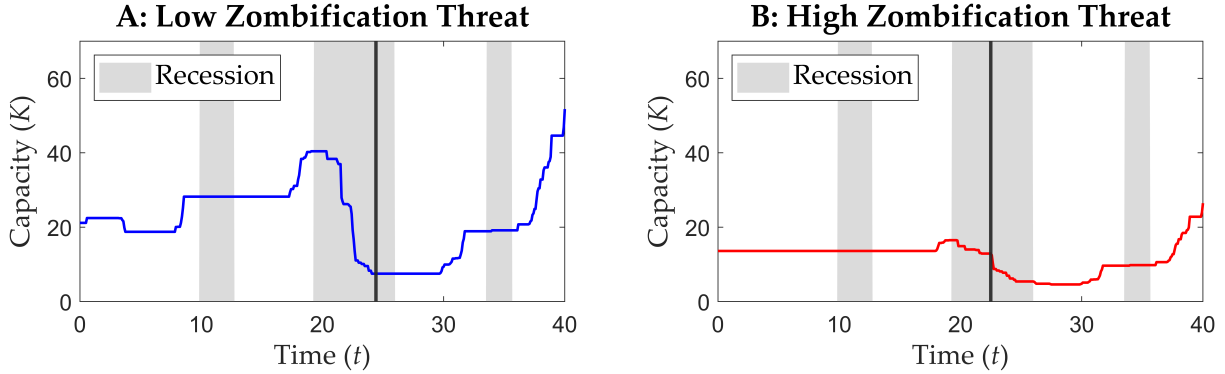


Figure 4. The figure plots the capacity choices of an unlevered firms whose demand evolves according to Figure 2 and which is competing with $n_L = 5$ (Panel A) and $n_L = 60$ (Panel B) levered firms. The vertical lines indicate the zombification events. The grey shaded areas are recession states. We describe the base case parameters in Section 2.3.

the economy, leading to an upward jump in the value of all available capacity units due to a discrete upward jump in the output price (“second-moment effect”).

Since both the first and second-moment effects induce the unlevered firms to delay their investment, a greater threat of zombification must necessarily do the same (see Panel A). More interestingly, while the first-moment effect induces the unlevered firms to speed up their disinvestment, the second-moment effect induces them to delay it. As the second moment effect dominates, Panel B reveals that a greater threat of rival zombification prompts unlevered firms to delay their disinvestment. Intuitively, the unlevered firms do so to avoid ending up in a situation in which they have to reacquire capacity because only fewer zombie firms than expected materialize in the future.

We offer further supportive evidence for this argument in Figure 4. We do so by plotting the capacity choices of one out of $n_U = 30$ unlevered firms whose demand evolves as in Figure 2 and which competes with $n_L = 5$ (Panel A, “low zombification threat”) and with $n_L = 60$ (Panel B, “high zombification threat”) levered firms, respectively. The vertical lines around $t = 25$ indicate the zombification events (occurring earlier if there are more levered firms), allowing us to distinguish the effects of yet-to-materialize and already occurred zombification. The figure shows that the unlevered firm reacts less to demand swings when there is a greater threat of rival zombification. Importantly, expected zombification ($t < 25$) leads to more inactivity

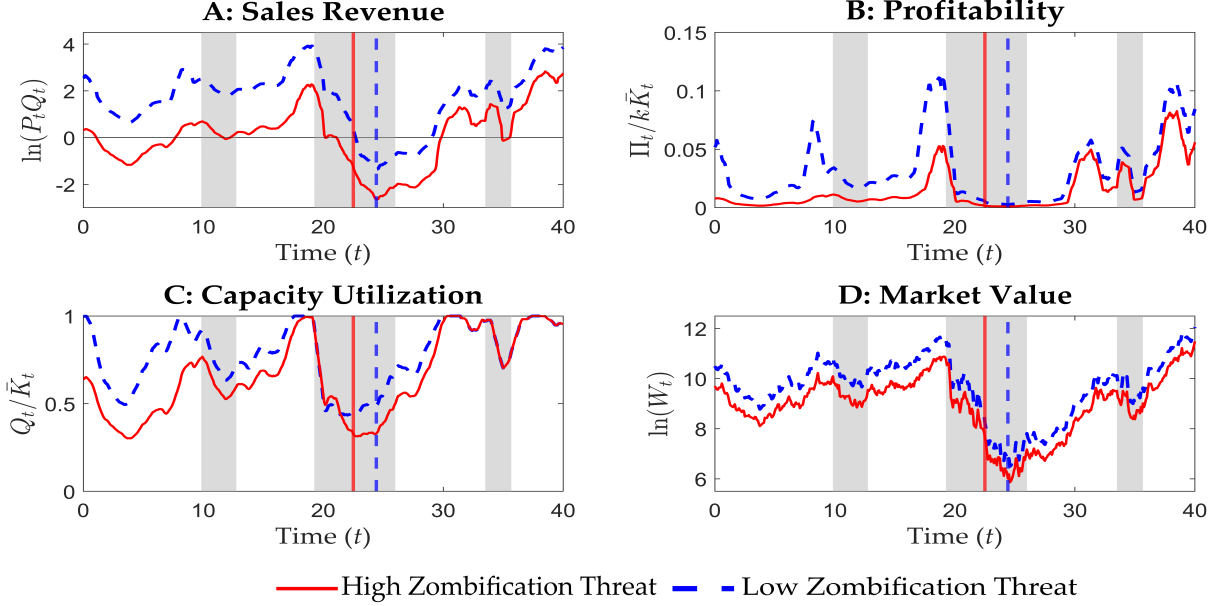


Figure 5. The figure plots the sales (Panel A), profitability (Panel B), capacity utilization (Panel C), and market value (Panel D) of an unlevered firm if demand evolves according to Figure 2. The solid red (dashed blue) lines show performance outcomes for a firm operating in an economy with a high (low) zombification threat where $n_L = 60$ ($n_L = 5$). We simulate at a monthly frequency and plot 12-month moving averages. The vertical lines indicate the zombification events. The grey shaded areas are recession states. We describe the base case parameters in Section 2.3.

than existing zombification ($t > 25$), which establishes the mere *threat of zombification* as an important and novel driver of dynamic corporate decisions beyond the previously studied existing zombification (Caballero et al. (2008) and Acharya et al. (2019, 2022, 2023)).

2.3.2 Rival Zombification & Firm Performance

Figure 5 more fully characterizes the real effects of expected and existing zombification on unlevered firms' performance by plotting their sales (Panel A), profitability (Panel B), capacity utilization (Panel C), and market value (Panel D) assuming that demand evolves according to Figure 2. The solid red (dashed blue) lines correspond to a firm in an economy with a high zombification threat $n_L = 60$ (low zombification threat with $n_L = 5$).

The figure shows that expected rival zombification depresses firms' real performance and value. To be specific, unlevered firms earn lower sales revenue, are less profitable, utilize less capital, and have lower market values in the presence of a high rival zombification threat. The

reason is the first-moment effect of zombie firms suppressing the output price and thus the economic viability of unlevered firms. Intriguingly, with the rival zombification event occurring at around $t = 25$, existing rival zombification continues to subsequently depress real outcomes but results in a weaker effect than expected rival zombification.

Figure 5 furthermore stresses the modulating role of market power as the key channel for rival zombification to exert its depressing consequences on unlevered firms. Expected zombification quantifies the threat of the continued burden on unlevered firms if defaulting firms do not leave the economy but continue to operate in their industry. The solid red and dashed blue lines visualize the greater zombification threat resulting from a higher number of levered firms n_L (or equivalently a higher demand slope γ) that results in higher prolonged competition and increased price pressure. Our model thus implies that the effects of uncertainty-induced rival zombification on healthy firms should be heightened when market power is low (and demand is more elastic) relative to when market power is high. The market power economic channel also gives rise to the possible implication that healthy firms facing a heightened threat of zombification may take actions to increase their market power (or demand inelasticity) in response to that threat by engaging in product differentiation through increased innovation.

3 Measuring Expected Zombification: Data & Methodology

In this section, we lay out our data sources and describe the methodology underlying the empirical testing of our model predictions. Our analysis proceeds in three steps. First, we outline our approach to identifying zombie firms, presenting loan-level regression results supporting our zombie classification schemes. Second, we describe and validate the empirical strategy used to estimate healthy firms' expectations of uncertainty-induced rival zombification in their industry. Finally, we introduce our main regression specifications: they project various theoretically motivated real decisions and outcome variables of healthy firms on expected uncertainty-induced rival zombification in their industry, control variables, and fixed effects.

3.1 Data Sources

We retrieve stock data from CRSP, financial statements data from Compustat, and capital structure data from Capital IQ. We download aggregate uncertainty indexes from the CBOE's, Scott Baker, Nicholas Bloom, and Steven Davies's, and Sydney Ludvigson's websites. We obtain single-stock three-month implied volatilities from OptionMetrics. We source country and state-level GDP growth from the Bureau of Economic Analysis (BEA). We obtain state-level labor force and regional inflation data from the Bureau of Labor Statistics (BLS). We further rely on establishment-level data from Your-Economy Time-Series (YTS) and shipping-firm data from Clarksons and Orbis (details to follow). Following Altman et al. (2022), we exclude firms from the financial (SIC codes 6000—6799) and public administration (SIC codes 9100—9999) sectors. We winsorize all firm-level (but not aggregate) variables at the 1st and 99th percentiles.

Table 1 offers descriptive statistics for the main variables used in our empirical work. The variables include investment rates, measures of existing and expected zombification, firm outcome variables, and control variables (Panel A), establishment and employment variables (Panel B), and investment rates and zombification measures specific to the global shipping industry (Panel C). We define the variables in the following sections and provide further details in Table C.1 in the Appendix. The descriptive statistics align with those reported elsewhere (see, e.g., Kim and Kung (2017) and Campello et al. (2023)).

TABLE 1 ABOUT HERE.

3.2 Modeling Expected Zombification

3.2.1 Identifying Current Zombie Firms

The first step of our analysis is to identify current zombie firms in an industry. Prior studies define a zombie firm as a highly distressed firm that is only able to service its debt obligations because it receives subsidized credit from its lenders (see, e.g., Caballero et al. (2008) and Acharya et al. (2022)). Following Altman et al. (2022), we first define a zombie firm as a

firm with an interest coverage ratio below one and an Altman Z-score below zero (“standard zombie”). Such a firm needs more credit (via the interest coverage constraint) but is also deeply distressed; presumably only still alive due to support from their lenders. Two key advantages of our first definition are that we can apply it to virtually all public firms and that it may capture forms of zombification not explicitly arising through the provision of subsidized credit.

As an alternative, we follow Caballero et al. (2008) and Acharya et al. (2019, 2022) in explicitly requiring a zombie firm to receive subsidized credit (“credit-subsidized zombie”). To do so, we add to the former two constraints the further condition that a zombie firm must pay an effective interest rate on its debt that lies below the theoretically most favorable rate offered to the most creditworthy firms. The identification works as follows. We calculate a firm’s effective interest rate as its interest expense scaled by its total debt. Next, we compute the theoretically most favorable rate by splitting the firm’s debt into short-term bank debt, long-term bank debt, and bonds using debt structure information from Capital IQ. We then assign the average short-term prime rate over the current year; the average long-term prime rate over the current year; and the lowest observed coupon rate on convertible bonds over the last five years as the most favorable rates to the three debt types. We finally compute a firm’s theoretically most favorable interest rate as a debt-value-weighted average taken over the most favorable rates assigned to the three debt types.

Figure 6 plots the evolution of the share of zombie firms in the U.S. separately for each of our zombie-firm definitions over our sample period. In agreement with Altman et al. (2022), the figure shows that the share of zombie firms markedly rises over our initial sample period from 1990 to 2002, from about 9% to 23% (standard zombie) or 1% to 12% (credit-subsidized zombie). In contrast, the share of zombie firms stays more constant over the remaining period until 2020. Overall, both measures track each other closely, supporting the findings in Acharya et al. (2022).

We use Dealscan data to verify that the firms we classify as zombies are indeed highly distressed firms artificially kept alive through subsidized credit. Specifically, we follow Graham et al. (2008), Campello et al. (2011), and Campello and Gao (2017) in estimating the following

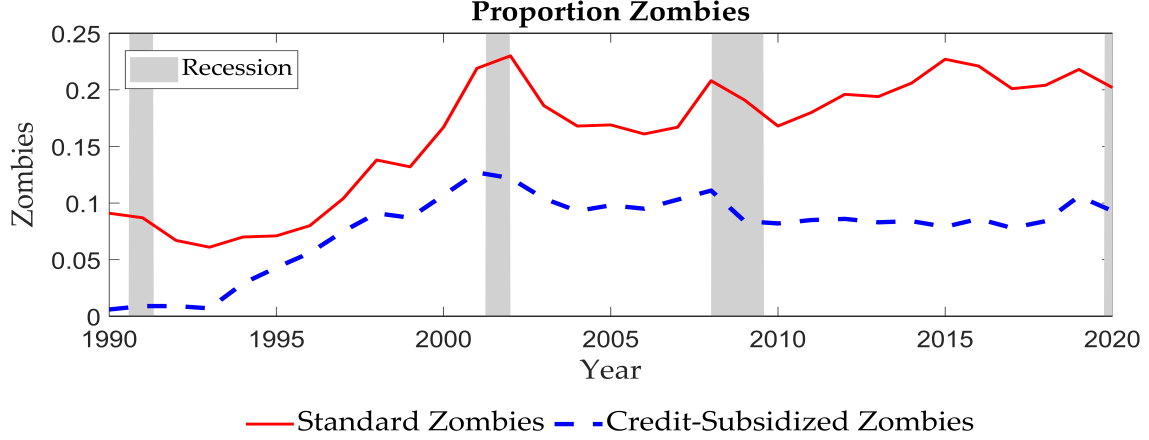


Figure 6. The figure plots the share of standard (dashed blue line) and credit-subsidized (red line) zombie firms over our sample period from 1990 to 2020.

loan-level panel regression in the sample of newly-initiated term loans and revolvers:

$$\begin{aligned}
 LoanTerm_{i,j,k,t} = & \beta Zombie_{i,j,t} + \boldsymbol{\gamma}' FirmControls_{i,j,t} + \\
 & \boldsymbol{\delta}' LoanControls_{i,j,k,t} + \sum_j \alpha_j + \sum_t \alpha_t + \epsilon_{i,j,k,t},
 \end{aligned} \tag{15}$$

where $LoanTerm \in \{Spread, Covenants, Collateral, SingleLender\}$ is a characteristic of a loan by bank syndicate k to firm i in industry j in year t , $Zombie \in \{Standard\ Zombie, Credit-Subsidized\ Zombie\}$, $FirmControls$ is a vector of firm controls, $LoanControls$ is a vector of loan controls, β , $\boldsymbol{\gamma}$, and $\boldsymbol{\delta}$ are parameters or parameter vectors, and α_j and α_t are industry and year fixed effects, respectively. In turn, $Spread$ is the natural log of the all-drawn-in spread over LIBOR, $Covenants$ the number of covenants, $Collateral$ an indicator variable equal to one if the loan is secured and else zero, and $SingleLender$ an indicator variable equal to one if the lender-commitment-share Herfindahl-Hirschman index is one (there is one single lender) and else zero, respectively. Conversely, $Standard\ Zombie$ ($Credit-Subsidized\ Zombie$) is an indicator variable equal to one if a firm is a zombie firm based on our standard (credit-subsidized) zombie definition; else zero. We describe the variables contained in $FirmControls$ ($Size, Age, Profitability, Tangibility, Market-to-Book, Leverage,$ and $Rated$), those in $LoanControls$ ($Loan\ Size, Loan\ Type,$ and

Maturity), and all others in Table C.1 in Appendix C. As is standard in the literature, we add to the loan controls *Loan Spread* whenever it does not act as a dependent variable.

Table 2 presents the results from estimating regression (15), with Panels A and B relying on our standard and credit-subsidized zombie definition, respectively. Plain numbers are coefficient estimates, whereas those in square brackets are *t*-statistics clustered at both the borrower firm and year levels. Notably, column (1) in both panels suggests that the firms we classify as zombies pay lower interest rates on their new loans relative to otherwise similar firms taking out similar credit facilities. Consistent with the priors used for our zombie classification, while Panel A reports that our standard zombie firms pay about 11% lower all-drawn-in spreads over LIBOR (*t*-statistic: -3.18), the corresponding percentage for the credit-subsidized zombies in Panel B is a higher 24% (*t*-statistic: -4.35).

TABLE 2 ABOUT HERE.

Looking into other loan characteristics, columns (2) and (3) show that loans to standard and credit-subsidized zombie firms contain fewer covenants and are less often secured, likely due to banks internalizing that they extend credit to distressed firms (so there is little need for an early warning system based on covenants) and zombie firms have few collateral assets left to pledge. Finally, column (4) demonstrates that zombie loans are more likely to involve just a single lender, with the chance of a single-lender loan rising by about 7% and 15% (*t*-statistics: 2.28 and 2.47) for standard and credit-subsidized zombie loans, respectively. The upshot is that zombie lending is more akin to relationship than arm's-length lending.

3.2.2 Predicting Expected Future Zombie Firms

The second step of our analysis is to model healthy (non-zombie) firms' expectation formation process regarding the potential emergence of zombie rival firms in their industry under heightened uncertainty. The central insight of our theoretical framework is that healthy firms rationally react to the *expectation* of uncertainty-induced zombification in their industries,

rather than only its *realization* (as in, e.g., Caballero et al. (2008) and Acharya et al. (2021)). To quantify that expectation, we estimate the following industry-specific panel regression over either our full sample period or over rolling windows of twelve years:

$$\begin{aligned} \text{Zombie}_{i,j,t} = & \beta \text{Uncertainty}_{t-1} + \boldsymbol{\gamma}' \text{MacroControls}_{t-1} \\ & + \boldsymbol{\delta}' \text{FirmControls}_{i,j,t-1} + \sum_i \alpha_i + \epsilon_{i,j,t} \end{aligned} \quad (16)$$

where $\text{Zombie} \in \{\text{Standard Zombie}, \text{Credit-Subsidized Zombie}\}$, Uncertainty is a three-month-lagged uncertainty proxy, $\text{MacroControls} = [\text{GDP Growth}, \text{Labor Force}, \text{Inflation}]'$ is a vector of one-year-lagged macro controls, $\text{FirmControls} = [\text{Small Firm}, \text{Young Firm}, \text{Manufacturing Firm}]'$ is a vector of one-year-lagged firm controls as in Altman et al. (2022), α_i is a firm fixed effect, and β , $\boldsymbol{\gamma}$, and $\boldsymbol{\delta}$ are parameters.⁶ We rely on the 50 Hoberg and Phillips (2016) product market classification to define our industries.

We use a comprehensive set of uncertainty proxies, allowing us to remain agnostic about any particular source of uncertainty. Specifically, we look into the CBOE volatility index (*VIX*); Baker et al.'s (2019) newspaper-based stock market volatility tracker (*EMV*); Baker et al.'s (2016) newspaper-based economic-policy uncertainty index (*EPU*); Jurado et al.'s (2015) aggregate financial, real, and macroeconomic uncertainty measures (*FIN*, *REAL*, and *MACRO*); as well as the market-specific assets-weighted averages of realized stock volatility (*ARV*) and implied stock volatility (*AIV*). See Table C.1 in Appendix C for more details about those and other variables and Cascaldi-Garcia et al. (2023) for a survey on uncertainty measures.

Table 3 displays the results from estimating regression (16) separately using each uncertainty proxy over all markets and the full sample period. Panel A estimates the proportion of future zombie firms based on the “standard definition,” while Panel B does so based on the “subsidized-credit definition.” In support of the risk-shifting motive for zombification revealed by our theory, the table offers strong evidence that uncertainty breeds future zombification,

⁶Specifically, *Small Firm* (*Young Firm*) [*Manufacturing Firm*] is an indicator variable equal to one if a firm's sales are below \$50 million (its age is less than ten years) [it operates in the manufacturing industry] and else zero.

with this result holding largely independent of our zombie firm definition and the type of uncertainty. For example, the slope coefficient of newspaper-based stock market volatility, *EMV*, is 0.206 (*t*-statistic: 4.66) in Panel A, implying that a one-standard-deviation increase in the *EMV* raises the future share of standard zombie firms in an industry by about 1.2 percentage points. Given that the average share of standard zombie firms is about 16%, this rise is economically quite meaningful. The table further suggests that financial uncertainty (*EMV* and *FIN*) matters more for the prediction of future zombies than other uncertainty sources, whereas political uncertainty (*EPU*) matters more for the prediction of future standard zombies than for credit-subsidized ones.

TABLE 3 ABOUT HERE.

The results in Table 3 suggest that different types of uncertainty contribute to the prediction of zombie firms. Since our goal is to approximate healthy firms' expectations formation process over a range of uncertainty proxies, we summarize the information across the proxies in a parsimonious manner by performing a principal component analysis on the aggregate uncertainty proxies (*VIX*, *EMV*, *EPU*, *FIN*, *REAL*, and *MACRO*) and the firm-weighted averages of the realized and implied stock volatility proxies (*ARV* and *AIV*) across industries, in the spirit of Jurado et al. (2015). Doing so allows us to collapse the information in those proxies into a smaller set of variables and to remain agnostic about any particular source of uncertainty.

Table 4 reports the results from the principal component analysis. Panel A shows the slope coefficients of each uncertainty proxy on the first four principal components (*PC1* to *PC4*). Panel B reports associated diagnostic statistics. As is often the case, the slope coefficients in Panel A show that *PC1* acts as a "level factor." To wit, since the uncertainty proxies all share similar coefficients of around 0.32 on *PC1*, an increase in that component raises all of them. In contrast, *PC2* captures distinct variation across the financial and non-financial proxies, with *EPU*, *REAL*, and *MACRO* (the remaining) loading positively (negatively) on that component. As a result, an increase in *PC2* lowers the financial but raises the non-financial uncertainty proxies. There does not appear to be an obvious interpretation for *PC3* and *PC4*. Finally, Panel

B suggests that while the first principal component explains about 65% of the variation in the uncertainty proxies, the first two to four in combination explain about 82% to 95%.

TABLE 4 ABOUT HERE.

We estimate the time-varying threat of uncertainty-induced zombification in each industry using the principal components derived above. Doing so requires us to construct a statistical model to approximate firms' expectation generation process. This construction proceeds in multiple steps, with the end product being our key variable of interest capturing healthy firms' expectations of the extent to which current uncertainty will spawn future rival zombie firms in their industry, labeled "*Expected Zombification*." We begin by estimating the following forecasting regression, as a counterpart to regression (16), separately in each of the 50 Hoberg and Phillips (2016) industries (j) over twelve-year rolling windows ($\tau \in \{t - 11, t\}$):

$$\begin{aligned} \text{Zombie}_{i,j,t} = & \beta_{j,\tau} \text{Uncertainty}_{t-1} + \boldsymbol{\gamma}' \mathbf{MacroControls}_{t-1} \\ & + \boldsymbol{\delta}' \mathbf{FirmControls}_{i,j,t-1} + \sum_i \alpha_i + \epsilon_{i,j,t}. \end{aligned} \quad (17)$$

There are two critical differences between the above regression (17) and the previous regression (16). Since regression (17) is estimated in each industry and using rolling windows, we obtain a matrix of industry-by-time varying estimated uncertainty slope coefficients, $\hat{\beta}_{j,\tau}$, for each industry $j \in [1, 50]$ and each twelve-year rolling window $\tau \in \{t - 11, t\}$ combination in our sample. Additionally, we use either the three-month-lagged first (*PC1*) or first two (*PC1* and *PC2*) principal components as uncertainty proxies in place of the eight aggregate uncertainty measures.⁷ As before, we estimate the regressions separately for our two zombie firm definitions, $\text{Zombie} \in \{\text{Standard Zombie}, \text{Credit-Subsidized Zombie}\}$.

⁷We restrict our attention to *PC1* and *PC2* since they are more interpretable and capture far larger shares of the variation in the eight uncertainty proxies than *PC3* and *PC4*.

Second, we form a prediction for *Expected Zombification* by computing the fitted value from the above regression (17) as follows:

$$\text{Expected Zombification}_{j,t} = \hat{\beta}_{j,\tau} \times \text{Uncertainty}_{t-1}. \quad (18)$$

In words, equation (18) combines the slope coefficient(s) of the principal component(s) from each industry-specific rolling-window regression with the end-of-window principal component value(s). As a result, there are four flavors of *Expected Zombification* corresponding to our choice of either the (1) first principal component (*PC1*) or (2) first two principal components (*PC1* and *PC2*) as our *Uncertainty* measure, and our choice of either the (3) standard or (4) credit-subsidized definition for the *Zombie* indicator variable. In sum, the *Expected Zombification* variables predict the trend in zombification over time while capturing cross-industry differences in the propensity of a particular firm to become a zombie under heightened uncertainty.

As a final step, we validate the predictive performance of our *Expected Zombification* variables. Doing so is critical to verify whether these variables are a reasonable representation of the forecasted expectations of rational, forward-looking firms in each industry on the extent of future zombification they anticipate will arise through heightened uncertainty. We formally assess the out-of-sample predictive ability of our *Expected Zombification* variables in Table 5.

TABLE 5 ABOUT HERE.

The table reports the results from Mincer and Zarnowitz (1969) out-of-sample predictive regressions of each version of our zombie firm indicator variable in a given year on the beginning-of-year values of the corresponding *Expected Zombification* variable. As discussed above, the *Expected Zombification* variables are constructed using either the first or the first two principal components obtained from the PCA of the eight aggregate uncertainty measures, whose results are shown in Table 4. Across the board, under both definitions of zombie firms and both predictive models including the first and first two principal components of the un-

certainty measures, *Expected Zombification* strongly predicts the realization of zombie firms.⁸ These results are reassuring in that they show that our *Expected Zombification* proxies reasonably represent the expectations of rational, forward-looking firms as zombie firms are indeed more likely to materialize in an industry following high *Expected Zombification* in that industry.

3.3 Explaining Healthy Firm Decisions & Outcomes

In our main empirical tests, we evaluate our model’s prediction that healthy firms exposed to a greater threat of zombification in their industries cut back on costly-to-reverse real decisions. To that end, we run the following panel regression in the sample of non-zombie firms:

$$\begin{aligned} RealDecision_{i,j,s,t} = & \beta Expected\ Zombification_{j,t-1} + \boldsymbol{\gamma}' FirmControls_{i,j,s,t-1} \\ & + \boldsymbol{\lambda}' MacroControls_{s,t-1} + \sum_i \alpha_i + \epsilon_{i,j,s,t} \end{aligned} \quad (19)$$

where *RealDecision* is one of a number of real decisions (described shortly) made by firm *i* operating in industry *j* and headquartered in state *s* over year *t*, *Expected Zombification* is a real-time forecast of the share of standard or credit-subsidized zombies spawning in industry *j* over year *t* at the start of that year (whose construction is described in Section 3.2.2), **FirmControls** = [*Size, Cash Flow, Stock Return, Q*]['] is a vector of one-year-lagged firm controls, **MacroControls** = [*State GDP Growth, State Labor Force, Regional Inflation*]['] is a vector of one-year-lagged macro controls including state *s*’s annual GDP growth, log labor force, and regional inflation rate, α_i is a firm-fixed effect, and β , $\boldsymbol{\gamma}$, and $\boldsymbol{\lambda}$ are parameters or parameter vectors. We rely on Hoberg and Phillips’s (2016) 50 product market classification to define industries. See Table C.1 for all variable definitions.

We use the following real-decision variables in regression (19). Our U.S. public firm analysis looks into firms’ real investment, as measured using their capital expenditures (*Investment(Capex)*) over year *t* scaled by assets at the start of that year. Alternatively, we use the sum of their capital ex-

⁸Note that a zero intercept, unit slope, and unit R² are unattainable given the construction of *Expected Zombification* using only the *Uncertainty* part of the full model estimated in regression (17).

penditures and M&A expenses as a broader investment proxy (*Investment (Comprehensive)*). We measure the same firms' disinvestment using the sale of property, plant and equipment (PPE) over year t , scaled by start-of-year PPE (*Disinvestment (Sale of PPE)*). Our U.S. public firm YTS analysis considers their establishment and employment investment and disinvestment, measured as the number of newly-opened (*Establishment Openings*) or newly-closed (*Establishment Closures*) establishments over year t , both scaled by the number of establishments at the start of the year, and the annual percentage change in their number of workers (*Employment Growth*). Finally, our global public and private shipping firm analysis examines the purchases, sales, and demolitions of shipping vessels. We discuss the methodology and variables used in that analysis later.

We also run the following panel regression on non-zombie firms to gauge the effect of future rival zombification in an industry on the performance of healthy firms in that industry:

$$\begin{aligned}
 RealOutcome_{i,j,s,t} = & \beta Expected\ Zombification_{j,t-1} + \boldsymbol{\gamma}' \mathbf{FirmControls}_{i,j,s,t-1} \quad (20) \\
 & + \lambda' \mathbf{MacroControls}_{s,t-1} + \sum_i \alpha_i + \epsilon_{i,j,s,t}
 \end{aligned}$$

where $RealOutcome \in \{Sales\ Growth, Profitability, Capacity\ Overhang, Total\ Value\}$, and other variables, parameters, and parameter vectors are defined as in regression (19), but no longer including Q in $\mathbf{FirmControls}$ when the outcome is *Total Value*. *Sales Growth* is the net sales growth of firm i over year t ; *Profitability* is the ratio of its sales minus costs-of-goods-sold, selling, general, and administrative expenses, and interest expenses over year t to its start-of-year assets; *Capacity Overhang* is the natural log of the ratio of its installed capacity-to-optimal capacity obtained from a stochastic frontier model; and *Total Value* is the Peters and Taylor (2017) total Q measure. See Appendix B for technical details on how we estimate capacity overhang.

4 The Real Effects of Expected Zombification: U.S. Public Firms

In this section, we investigate how U.S. public firms respond to expectations of uncertainty-induced rival zombification in their industries. Specifically, we focus on outcomes capturing

non-zombie firms' investment and disinvestment decisions and their future performance. We first do so using data from Compustat. We next turn to YTS data to explore both the establishment opening and closing as well as the employment decisions of those firms.

4.1 Investment

In Table 6, we present the results from estimating regression (19) using *Investment (Capex)* (columns (1), (2), (5), and (6)) or *Investment (Comprehensive)* (columns (3), (4), (7), and (8)) as the dependent variable. The first four columns use the *standard zombie* definition to calculate *Expected Zombification* and to construct the sample; the remaining columns analogously use the *credit-subsidized zombie* definition. We rely on one principal component to calculate *Expected Zombification* in the odd-numbered columns, and on two principal components in the even-numbered columns.

TABLE 6 ABOUT HERE.

The table suggests that the expectation of uncertainty-induced rival zombification in an industry prompts the healthy firms in that industry to significantly cut their investment. In particular, the slope coefficient on *Expected Zombification* is negative and highly statistically significant across all columns (t -statistics between -2.64 and -6.99). The effects of *Expected Zombification* are also economically sizeable. Consider, for example, the comprehensive investment proxy and *Expected Zombification* computed from the standard zombie firm definition with one single principal component in column (3). The coefficient of -0.180 implies that a one-standard-deviation increase in *Expected Zombification* leads investment to fall by 0.006 , which is over 6% of the sample mean of the investment variable (0.095). Since the comprehensive investment proxy reflects investment into both tangible and intangible assets (PP&E and M&As), and that investment into the latter assets are plausibly costlier-to-reverse, the table further reveals that *Expected Zombification* tends to be more significantly negatively related to *Investment (Comprehensive)* than *Investment (CAPEX)*, supporting our theoretical

predictions of strong zombie-firm-induced real options effects. Turning to the firm controls, investment rises with cash flow and Q but falls with size and the future stock return, which is largely consistent with prior studies (see, e.g., Gulen and Ion (2016) and Chen et al. (2007)).

4.2 Disinvestment

We next examine the relationship between expected uncertainty-induced zombification and healthy firms' disinvestment decisions. In Table 7, we display coefficient estimates corresponding to regression (19) with our disinvestment proxy, *Disinvestment (Sale of PPE)*, as the dependent variable. As before, we consider two definitions of zombification in the estimation of *Expected Zombification* and *Existing Zombification*, standard zombies in the first two columns and credit-subsidized zombies in the latter two columns. In forming our *Expected Zombification* metric, we consider again either the first or first two principal components of our uncertainty measures as the predictive variables.

TABLE 7 ABOUT HERE.

Across all four columns, greater expected uncertainty-induced zombification in an industry is associated with significantly lower disinvestment by healthy firms in that industry. This result is notable in light of the difficulties in precisely measuring disinvestment among public firms. Moreover, the negative relationship between disinvestment and expected zombification that we find is fully consistent with our model prediction that firms will cut back on both costly-to-reverse margins investment *and* disinvestment. The economic magnitudes of the disinvestment coefficients are also notable. The estimate in column (1) of -0.049 implies that a one-standard-deviation increase in *Expected Zombification* is associated with a drop in disinvestment of 0.002, around 14% of the mean rate of disinvestment (0.014).

4.3 Contrasting Expected & Existing Zombification

We next contrast the novel effects of *expected* zombification documented above with the previously-studied negative externalities of *existing* zombification (see, e.g., Caballero et al. (2008) and Acharya et al. (2021)). Given the highly correlated nature of the *Expected Zombification* and *Existing Zombification* variables, we include these variables in a staggered fashion, first considering their effects separately and then combining them in the same specification. Table 8 presents the results on investment.

TABLE 8 ABOUT HERE.

In Table 8, columns (1), (4), (7), and (10) repeat the results from Table 6 for comparison purposes, columns (2), (5), (8), and (11) consider the role of *Existing Zombification* separately, while columns (3), (6), (9), and (12) consider the two variables jointly. Importantly, while the results show that (consistent with prior work) healthy firms curb their investment decisions in response to existing zombies, the effect is only statistically significant under our standard zombie definition (see columns (2) and (3)). Moreover, across the remaining columns (4) through (12), the effect of existing zombification is always less economically significant than that of expected zombification, suggesting that healthy firms react more to the *threat* rather than the *materialization* of zombie firms.

We repeat this comparative exercise in Table 9 considering disinvestment as the outcome variable. It is worth noting that there is *no evidence* that healthy firms respond in terms of their disinvestment to *Existing Zombification*, either when this variable is included individually, or jointly with *Expected Zombification*. On the other hand, *Expected Zombification* remains negative and statistically significant even in the presence of *Existing Zombification*. As such, the results in Table 9 provide further support for our theoretical, real-options-based prediction.

TABLE 9 ABOUT HERE.

Taken together, the results in Tables 8 and 9 jointly suggest that heightened expectations of uncertainty-induced zombification in an industry are associated with “inaction” by healthy

firms in that industry, as such firms slow down their asset allocation by cutting both investment and disinvestment. They provide novel empirical evidence on the dominant role of *expected* as opposed to *realized* zombification in shaping forward-looking firms' real decisions.

4.4 Performance Outcomes

We next evaluate the future performance of firms exposed to the threat of uncertainty-induced rival zombification. This analysis is informative as it highlights a unique aspect of the specific type of uncertainty we study. To wit, while broader forms of uncertainty (such as those studied in Bloom (2009), Kim and Kung (2017), and Campello et al. (2023)) can imply good and bad future news, uncertainty about the arrival of zombie firms in an industry necessarily implies bad future news for the healthy firms in that industry. The key question is: how bad?

Table 10 gives the results from estimating regression (20) on the non-zombie U.S. public firms using *Sales Growth* (columns (1) and (2)), *Profitability* ((3) and (4)), *Capacity Overhang* ((5) and (6)), and *Total Value* ((7) and (8)) as the dependent variable. Panel A uses our standard zombie definition and Panel B uses the credit-subsidized zombie definition. Conversely, while we employ one principal component to calculate *Expected Zombification* in the even-numbered columns, we employ two in the odd-numbered columns.

TABLE 10 ABOUT HERE.

The table confirms that the threat of uncertainty-induced zombification in an industry negatively affects the future real outcomes of healthy firms in that industry, lowering their sales growth, profitability, and total value, while raising their capacity overhang. The results using *Expected Zombification* computed from the standard zombie firm definition with one principal component in the odd-numbered columns in Panel A reveal coefficients on *Expected Zombification* of -0.735 , -0.039 , 0.182 , and -1.280 (t -statistics: -10.91 , -2.55 , 3.95 , and -5.16) in the *Sales Growth*, *Profitability*, *Capacity Overhang*, and *Total Value* regressions, respectively. As before, the effects are often economically important, with a one-standard-deviation in-

crease in the same *Expected Zombification* variable as above inducing *Total Value* to drop by -0.045 , which is 4% of its sample mean. While the negative effects on sales growth and profitability likely arise because zombie firms depress output prices and raise input costs (Acharya et al. (2021)), the sales growth effect is plausibly stronger since healthy firms optimally reduce their capacity utilization and produce less in response to zombie rivals. Next, since both capacity overhang and total value indicate when it is optimal for a firm to exercise its growth options, the effects on capacity overhang and total value suggest that the arrival of zombie firms drives the growth options of healthy firms deeper out-of-the-money. As such, these dynamics provide further support for our theorized investment and disinvestment mechanisms.

4.5 Other Outcomes & Robustness

We briefly summarize the results of a set of additional tests whose results are reported in Appendix C. First, in Table C.3 we examine the relationship between expected uncertainty-induced zombification in an industry and several outcome variables corresponding to financial decisions made by healthy (non-zombie) firms in that industry. While our model in Section 2 abstracts from these decisions for the sake of traceability, firms' cash and liquidity management, payout, and financing choices are naturally and intuitively linked to the real choices studied in our model (see also Bolton et al. (2011)). The results in Table C.3 support our empirical findings on depressed investment, disinvestment, and performance metrics presented in the above set of tables. The first two columns show that greater expectations of uncertainty-induced zombification are associated with healthy firms in the same industry accumulating more cash. This action is consistent with non-zombie firms' precautionary motives and greater inaction (in terms of investment and disinvestment) when faced with a greater threat of zombie rival firms being kept alive in their industries. The second pair of columns implies that healthy firms display no significant changes in inventories, consistent with investment into such assets being almost costless to reverse and confirming our theory-based real options dynamics. Turning to payouts, columns (5) and (6) point to a notable decrease in cash returned to shareholders through

dividends and repurchases, once again implying healthy firms facing heightened uncertainty-induced zombification expectations in their industry have a greater motive to shore up liquidity on their balance sheets. Lastly, turning to debt and equity financing, the results in columns (7) through (9) provide modest evidence of reduced issuances of both forms, though equity financing seems less reliably affected. That healthy firms cut back on payouts and equity and debt issuances when uncertainty-induced zombification expectations are high is also consistent with related results on how financing frictions amplify uncertainty shocks (see Alfaro et al. (2023)).

In subsequent appendix tables, we examine the robustness of our core investment and disinvestment results within the subsample of firms in the manufacturing, mining, and construction industries (SIC codes 1000—3999). Our reasons for doing so are twofold. First, our theoretical real-options-based model likely maps most closely to the capacity and asset allocation decisions of tangible asset-focused firms in these industries (see, e.g., Dixit and Pindyck (1994) and Bloom et al. (2007)). Second, our investment and disinvestment proxies are likely more precisely measured for such firms with relatively lower intangible intensity (see, e.g., Crouzet and Eberly (2019)). Tables C.4 and C.5 replicate the results of Tables 6 and 7, respectively, restricted to the aforementioned subsample. Across all columns of both tables, the results continue to obtain with, if anything, stronger economic magnitudes and statistical significance. These robustness checks validate that our results are unlikely to be driven by noise. They also provide important support for our model as our results obtain most strongly in the subset of industries for which our model would bear a greater resemblance to real firm decision-making.

4.6 Establishment & Employment Decisions

In Table 11, we present the results from re-estimating regression (19) on non-zombie public U.S. firms from YTS with *Establishment Openings* (columns (1) and (2)), *Establishment Closures* ((3) and (4)), and *Employment Growth* ((5) and (6)) as the dependent variable. Our real options model would predict similar dynamics for hiring and firing as for investing and disinvesting (see also Bloom (2009)). A key advantage of using the YTS data is that they enable us to calculate

employment growth from the number of workers at each establishment. Panel A uses our standard zombie definition and Panel B uses the credit-subsidized zombie definition. We use one principal component to compute *Expected Zombification* in the odd-numbered columns and two in the even-numbered columns. Since the YTS data contain the geographical locations of establishments, we use an employee-weighted average of the state-level macro control variables to more finely account for concurrent changes in local economic conditions.

TABLE 11 ABOUT HERE.

The table confirms that the threat of uncertainty-induced zombification in an industry prompts the healthy firms in that industry to cut back on their establishment openings and closures as well as employment. Specifically, in agreement with our investment results in Table 6, columns (1) and (2) in Panel A show that the slope coefficient of *Expected Zombification* on *Establishment Openings* is always negative and significant. If anything, the economic magnitudes of the opening effects are more pronounced than the broad investment effects in Table 6. Looking into *Expected Zombification* computed from one principal component, a one-standard-deviation increase in that variable induces *Establishment Openings* to drop by about 0.018, about 12% of its sample mean. Notably, columns (3) and (4) in Panel A reveal that the slope coefficient of *Expected Zombification* on *Establishment Closures* is also negative, though statistically less significant. The final two columns document that the slope coefficient of *Expected Zombification* is also negative and highly significant on *Employment Growth*. Looking into economic significance, a one-standard-deviation increase in the same *Expected Zombification* variable as above induces *Employment Growth* to drop by about 19% of its mean.

4.7 The Modulating Role of Market Power & Innovation

In our final tests involving U.S. public firms, we examine the key modulating force underlying our model predictions, namely, the role of market power. As explained in Section 2.3, healthy firms react to expected zombification because all firms in the industry, healthy and zombie

alike, face a common, downward-sloping demand curve (see equation (3)). The extent to which healthy firms' output price is affected by expected zombification thus depends on their market power or price-setting ability. This insight into the modulating role of competition on our theoretical predictions lends itself to two natural empirical tests. First, healthy firms in industries characterized by greater market power should display little to no responses in their real decisions to greater uncertainty-induced expectations of zombification while those in industries characterized by lower market power should display more pronounced responses. Second, healthy firms should respond to greater expected uncertainty-induced rival zombification by taking actions to decrease their demand elasticity, for instance, by engaging in product differentiation through innovation.

We first examine the cross-sectional differences in our baseline results as a function of market power. We follow prior literature by using detailed, annual industry-level data on markups in 4-digit SIC industries from the NBER-CES Manufacturing Industry Database as proxies for market power. As in Bustamante and Donangelo (2017), for each industry and year, the average markup is defined as the value of sales plus the change in inventories minus payroll and cost of materials, all divided by the value of sales plus the change in inventories. We restrict our attention to subsamples of firms in industry-years with high markups (top quartile of the annual distribution of industry markups) and those with low markups (bottom quartile) in Table 12.

TABLE 12 ABOUT HERE.

Table 12 reports the results of tests in which we replicate the results of columns (1), (2), (5), and (6) of Table 6 in subsamples alternately consisting of firms in high markup (odd-numbered columns) and low markup (even-numbered columns) industry-years. Across both definitions of zombies and variations in the number of uncertainty principal components considered, the contrast in coefficients on *Expected Zombification* is striking. Consistent with our theoretical mechanism being muted among firms likely to have higher market power (and thus price-setting ability), *Expected Zombification* attracts insignificant coefficients in high markup industry-years as evident in the odd-numbered columns. On the other hand, in industry-years

characterized by low markups (lower market power), healthy firms strongly respond to the heightened threat of uncertainty-induced zombification by cutting back on their investment. This is evident in the highly statistically significant coefficients on *Expected Zombification* in the even-numbered columns. Beyond providing support for our proposed theoretical mechanism, these results are also beneficial in helping us to rule out potential alternative explanations. Specifically, the lack of significant results in the high market power subsample renders it highly unlikely that the negative coefficients on *Expected Zombification* in our baseline tests in Table 6 are merely capturing the general negative uncertainty-investment relationship, as this effect should be present in both markup subsamples. In contrast, our proposed zombie expectations-related mechanism is uniquely characterized by the modulating role of market power, a notion that finds strong support in the results of Table 12.

We next examine the effects of expected zombification on healthy firms' innovation activity by estimating our baseline specification in regression (19) with innovation measures as our outcome variables. We gauge firms' innovation activity by considering two common metrics, the number of patents issued in a given year scaled by lagged assets (*Patent Count*) and the number of citations accruing to those patents in a given year scaled by lagged assets (*Citation Count*). The results are reported in Table 13.

TABLE 13 ABOUT HERE.

The coefficient estimates across all columns of Table 13 indicate that healthy firms respond to greater zombification threats by accelerating their innovation. In doing so, they act consistent with their theoretically conjectured incentive to mitigate the impact of anticipated rival zombification by differentiating their outputs from rivals, thereby decreasing demand elasticity and dampening the negative price pressure imposed by zombie rivals. Apart from substantiating our model predictions, these findings add to the literature by identifying a novel channel through which uncertainty promotes innovation.⁹

⁹Campello and Kankanhalli (2022) review the mixed evidence in the literature on the relationship between uncertainty and innovation.

In sum, this section offers evidence that healthy U.S. public firms reduce their investment, establishment openings and closures, and employment in response to the expectation of uncertainty-induced zombification in their industries, providing strong support for our model predictions. In addition, it also reveals that those same firms observe decreases in their sales growth, profitability, and total value but increases in their capacity overhang as the threat materializes and zombie firms eventually start emerging in their industries. Finally, firms' responses are modulated by the degree of market power in their industries with lower market power translating to heightened effects. Firms additionally engage in greater innovation consistent with their incentives to shore up their market power.

5 The Real Effects of Expected Zombification: Global Shipping

Firms

Our next set of tests aims at validating our theoretical predictions using granular data on shipping firms' capital allocation decisions. The data we use come from Clarksons, a leading maritime research firm (see Campello et al. (2023)). We obtain detailed information on the new vessel orders, secondary market transactions, and demolition activity of shipping firms. We use a company-name-matching algorithm to merge the shipping data with financial data from the entire Orbis universe, manually verifying every single match. Our analysis gauges how the expectation of uncertainty-induced rival zombification in narrowly-defined shipping markets shapes healthy firms' ship-level purchase, sale, and demolition decisions. As our global shipping firm sample is significantly different from the U.S. firm sample in Section 4, we first outline how we adapt the methodology introduced in Section 3, offer more details about our unique shipping variables, and discuss our data sources.

5.1 Shipping Firm Methodology & Data

We run the following panel regression on non-zombie shipping firms to determine how these firms react to the threat of uncertainty-induced rival zombification in their markets:

$$RealDecision_{i,j,t}^S = \beta Expected\ Zombification_{j,t-1}^S + \boldsymbol{\gamma}' FirmControls_{i,j,t-1} + \boldsymbol{\lambda}' Forward\ Return_{i,j,t-1} + \sum_i \alpha_i + \epsilon_{i,j,s,t} \quad (21)$$

where $RealDecision^S$ is one of a number of real ship-related decisions (described shortly) made by firm i operating in subsector j in year t , $Expected\ Zombification^S$ is a forecast of the share of zombies spawning in subsector j over year t at the start of that year, $FirmControls = [Size, Cash\ Flow^S]$ is a vector of one-year-lagged firm controls, $Forward\ Return$ is a vector of the prior four quarterly returns of forward contracts written on the freight rate in subsector j , α_i is a firm-fixed effect, and β , $\boldsymbol{\gamma}$, and $\boldsymbol{\lambda}$ are parameters or parameter vectors.¹⁰ We retrieve the forward data from the Baltic Exchange via Bloomberg.

Consistent with Campello et al. (2023), we use the following variables as outcomes in regression (21). Our investment proxies are the number of all (*All Ship Investment*), new (*New Ship Investment*), and used (*Used Ship Investment*) ship purchases of firm i over year t scaled by the number of ships in its fleet at the start of the year. Our disinvestment proxies are the number of ship disinvestment (*All Ship Disinvestment*), sales (*Ship Sales*), and demolitions (*Ship Demolitions*) of firm i over year t scaled by the number of ships in its fleet at the start of the year.

We rely on a modified version of regression (16) to calculate expected zombification in a shipping subsector. We are unable to adequately identify distressed shipping firms using Altman's Z-score because we lack data needed to compute that score for many shipping firms (primarily those that are privately owned). Accordingly, we define a shipping firm as a zombie firm if its interest coverage ratio is below one (*Shipping Zombie*). Following Campello et al.

¹⁰In line with Campello et al. (2023), we use the historical returns of forward contracts on subsector-specific freight rates as our first-order moment proxy, and we define eight shipping subsectors (i.e., markets) based on two ship sectors (dry bulkers and tankers) and four size categories within each sector (Handysize, Handymax, Panamax, and Capesize for bulkers and Medium Range, Long Range 1, Long Range 2, and Very Large Crude Carrier for tankers).

(2023), we next use the value-weighted average of three-month-ahead implied volatility taken over all optionable firms in a subsector to capture the unique subsector-specific uncertainty. We then estimate regression (16) separately by subsector but over our full sample period since we do not have enough observations to estimate rolling-window regressions. We finally combine the slope coefficient of the subsector-specific uncertainty proxy with the proxy's value at the end of year $t - 1$, to measure uncertainty-induced zombification in a subsector over year t .

5.2 Ship Purchases, Sales & Demolitions

Table 14 presents the results from estimating regression (21) on healthy shipping firms, with columns (1) to (6) using *All Ship Investment*, *New Ship Investment*, *Used Ship Investment*, *All Ship Disinvestment*, *Ship Sales*, and *Ship Demolitions* as dependent variables, respectively. Plain numbers are parameter estimates, whereas those in square brackets are t -statistics clustered at the country, subsector, and year levels. The tabulated results fully corroborate our U.S. public firm results. To wit, while column (1) shows that a greater threat of uncertainty-induced zombification in a subsector leads the healthy firms in that subsector to cut back on their investment into new ships, the same threat also prompts them to delay their disinvestment of existing ships. In terms of economic significance, a one-standard-deviation increase in *Expected Zombification*^s induces investment to decrease by -0.032 , about 24% of its sample mean, and disinvestment to decrease by -0.015 , about 35% of its sample mean. The remaining columns suggest that the investment effect comes mostly through new orders of ships, whereas the disinvestment effect comes through both their sale and demolition, as discussed in Campello et al. (2023). These later results point to the role of irreversibility costs in modulating healthy firms' responses to the expectation of uncertainty-induced zombification.

TABLE 14 ABOUT HERE.

The results in Table 14 provide further support for our theoretical predictions. The fact that shipping firms disproportionately cut back on their investment in new ships, which embody

the latest technologies, suggests that expectations of creditors' zombification incentives under uncertainty have pernicious effects on the renewal of otherwise healthy firms' asset base even before those expectations materialize in actual zombie lending decisions.

6 Concluding Remarks

We posit that financially sound (“healthy”) firms pre-emptively react to the expectation of uncertainty-induced rival zombification rather than only its realization in their industries. Using a real options model of an industry in which levered and unlevered firms compete based on output, we show that the unlevered firms optimally delay their capacity choices in response to the threat that uncertainty induces creditors to turn defaulting levered rival firms into zombie firms. In our empirical work, we use industry-specific rolling-window regressions of a zombie indicator on uncertainty, controls, and fixed effects, calculating the threat of zombification as the end-of-window fitted value based on various uncertainty proxies. We next report that a greater rival zombification threat induces healthy U.S. public firms to delay their real investment, establishment openings and closures, and employment, negatively affecting their future performance. Our results highlight the key role of market power in modulating the negative externalities of expected zombification. Expected zombification also impacts financing policies, leading to increased cash holdings, reduced payouts, and reduced debt issuance. We further report that such a threat also induces healthy private-and-public firms from the global shipping industry to delay their investment and disinvestment of shipping vessels.

Our results provide evidence for a novel channel through which uncertainty exerts a detrimental effect on firms' asset allocation decisions. They suggest that environments of high uncertainty may be more damaging to capital accumulation, firm performance, and creative destruction than previously thought.

References

- Acharya, Viral V, Matteo Crosignani, Tim Eisert, and Christian Eufinger, 2023, Zombie credit and (dis-) inflation: evidence from europe, *The Journal of Finance*, *Forthcoming* .
- Acharya, Viral V, Matteo Crosignani, Tim Eisert, and Sascha Steffen, 2022, Zombie lending: Theoretical, international, and historical perspectives, *Annual Review of Financial Economics* 14, 21–38.
- Acharya, Viral V, Tim Eisert, Christian Eufinger, and Christian Hirsch, 2019, Whatever it takes: The real effects of unconventional monetary policy, *The Review of Financial Studies* 32, 3366–3411.
- Acharya, Viral V, Simone Lenzu, and Olivier Wang, 2021, Zombie lending and policy traps, *NBER Working Paper* 29606 .
- Alfaro, Ivan, Nicholas Bloom, and Xiaoji Lin, 2023, The finance uncertainty multiplier, *Journal of Political Economy*, *Forthcoming* .
- Altman, Edward I, Rui Dai, and Wei Wang, 2022, Global zombies, *Working Paper* .
- Aretz, Kevin, and Peter F Pope, 2018, Real options models of the firm, capacity overhang, and the cross section of stock returns, *The Journal of Finance* 73, 1363–1415.
- Baker, Scott Baker, Nicholas Bloom, Steven J Davis, and Kyle Kost, 2019, Policy news and equity market volatility, *NBER Working Paper* 25720 .
- Baker, Scott R., Nicholas Bloom, and Steven J. Davis, 2016, Measuring economic policy uncertainty, *The Quarterly Journal of Economics* 131, 1593–1636.
- Basu, Susanto, and Brent Bundick, 2017, Uncertainty shocks in a model of effective demand, *Econometrica* 85, 937–958.
- Bernanke, Ben S, 1983, Irreversibility, uncertainty, and cyclical investment, *The Quarterly Journal of Economics* 98, 85–106.
- Bhamra, Harjoat S, Lars-Alexander Kuehn, and Ilya A Strebulaev, 2010, The aggregate dynamics of capital structure and macroeconomic risk, *The Review of Financial Studies* 23, 4187–4241.
- Bhamra, Harjoat S., and Kyung Hwan Shim, 2017, Stochastic idiosyncratic cash flow risk and real options: Implications for stock returns, *Journal of Economic Theory* 168, 400–431.
- Bloom, Nicholas, 2009, The impact of uncertainty shocks, *Econometrica* 77, 623–685.
- Bloom, Nicholas, Max Floetotto, Nir Jaimovich, Itay Saporta-Eksten, and Stephen J Terry, 2018, Really uncertain business cycles, *Econometrica* 86, 1031–1065.
- Bloom, Nick, Stephen Bond, and John Van Reenen, 2007, Uncertainty and investment dynamics, *The Review of Economic Studies* 74, 391–415.
- Bolton, Patrick, Hui Chen, and Neng Wang, 2011, A unified theory of tobin's q, corporate investment, financing, and risk management, *The Journal of Finance* 66, 1545–1578.
- Bustamante, M Cecilia, and Andres Donangelo, 2017, Product market competition and industry returns, *The Review of Financial Studies* 30, 4216–4266.
- Caballero, Ricardo J, Takeo Hoshi, and Anil K Kashyap, 2008, Zombie lending and depressed restructuring in japan, *American Economic Review* 98, 1943–1977.

- Campello, Murillo, and Janet Gao, 2017, Customer concentration and loan contract terms, *Journal of Financial Economics* 123, 108–136.
- Campello, Murillo, and Gaurav Kankanhalli, 2022, Corporate decision-making under uncertainty: Review and future research directions, Technical report, National Bureau of Economic Research.
- Campello, Murillo, Gaurav Kankanhalli, and Hyunseob Kim, 2023, Delayed creative destruction: How uncertainty shapes corporate assets, *Journal of Financial Economics, Forthcoming* .
- Campello, Murillo, Chen Lin, Yue Ma, and Hong Zou, 2011, The real and financial implications of corporate hedging, *The Journal of Finance* 66, 1615–1647.
- Cascaldi-Garcia, Danilo, Cisil Sarisoy, Juan M Londono, John H Rogers, Bo Sun, Deepa D Datta, Thiago Ferreira, Olesya Grishchenko, Mohammad R Jahan-Parvar, Francesca Loria, Sai Ma, Marius Rodriguez, and Ilknur Zer, 2023, What is certain about uncertainty?, *Journal of Economic Literature* 61, 624–654.
- Chen, Qi, Itay Goldstein, and Wei Jiang, 2007, Price informativeness and investment sensitivity to stock price, *The Review of Financial Studies* 20, 619–650.
- Chopra, Yakshup, Krishnamurthy Subramanian, and Prasanna L Tantri, 2021, Bank cleanups, capitalization, and lending: Evidence from india, *The Review of Financial Studies* 34, 4132–4176.
- Crouzet, Nicolas, and Janice C Eberly, 2019, Understanding weak capital investment: The role of market concentration and intangibles, *Proceedings of the 2018 Jackson Hole Symposium* 87–148.
- Dixit, Avinash, and Robert S Pindyck, 1994, *Investment Under Uncertainty* (Princeton University Press).
- Graham, John R, Si Li, and Jiaping Qiu, 2008, Corporate misreporting and bank loan contracting, *Journal of Financial Economics* 89, 44–61.
- Gryglewicz, Sebastian, and Simon Mayer, 2023, Dynamic contracting with intermediation: Operational, governance, and financial engineering, *The Journal of Finance, Forthcoming* .
- Gulen, Huseyin, and Mihai Ion, 2016, Policy uncertainty and corporate investment, *The Review of Financial Studies* 29, 523–564.
- Guo, Xin, Jianjun Miao, and Erwan Morellec, 2005, Irreversible investment with regime shifts, *Journal of Economic Theory* 122, 37–59.
- Hoberg, Gerard, and Gordon Phillips, 2016, Text-based network industries and endogenous product differentiation, *Journal of Political Economy* 124, 1423–1465.
- Jurado, Kyle, Sydney C. Ludvigson, and Serena Ng, 2015, Measuring uncertainty, *American Economic Review* 105, 1177–1216.
- Kellogg, Ryan, 2014, The effect of uncertainty on investment: Evidence from texas oil drilling, *American Economic Review* 104, 1698–1734.
- Kim, Hyunseob, and Howard Kung, 2017, The asset redeployability channel: How uncertainty affects corporate investment, *The Review of Financial Studies* 30, 245–280.
- Kumar, Saten, Yuriy Gorodnichenko, and Olivier Coibion, 2023, The effect of macroeconomic uncertainty on firm decisions, *Econometrica, Forthcoming* .

- Kumbhakar, Subal C, and C A Know Lovell, 2000, *Stochastic Frontier Analysis* (Cambridge University Press).
- Leahy, John V, and Toni M Whited, 1996, The effect of uncertainty on investment: Some stylized facts, *Journal of Money, Credit and Banking* 28, 64–83.
- McDonald, Robert, and Daniel Siegel, 1986, The value of waiting to invest, *The Quarterly Journal of Economics* 101, 707–727.
- McGowan, Müge Adalet, Dan Andrews, and Valentine Millot, 2018, The walking dead? zombie firms and productivity performance in oecd countries, *Economic Policy* 33, 685–736.
- Mincer, Jacob A, and Victor Zarnowitz, 1969, The evaluation of economic forecasts, in *Economic forecasts and expectations*, 3–46 (NBER).
- Peters, Ryan H, and Lucian A Taylor, 2017, Intangible capital and the investment-Q relation, *Journal of Financial Economics* 123, 251–272.
- Pindyck, Robert S, 1988, Irreversible investment, capacity choice, and the value of the firm, *American Economic Review* 78, 969–985.
- Schmidt, Christian, Yannik Schneider, Sascha Steffen, and Daniel Streitz, 2020, Capital misallocation and innovation, *Working Paper* .
- Skrastins, Janis, 2021, Barter credit: warehouses as a contracting technology, *The Journal of Finance* .
- Stopford, Martin, 2009, *Maritime Economics 3rd Edition* (Routledge).
- Strebulaev, Ilya A, and Baozhong Yang, 2013, The mystery of zero-leverage firms, *Journal of Financial Economics* 109, 1–23.

Table 1. Descriptive Statistics

In this table, we report descriptive statistics for our analysis variables. While Panel A focuses on our Compustat variables, Panels B and C consider our Your-Economy Time-Series (YTS) and Clarkson-Orbis shipping variables, respectively. The descriptive statistics include the total number of observations (N), the mean, the standard deviation (SD), the first quartile (Q1), the median, and the third quartile (Q3). See Table C.1 in the appendix for the exact definitions of our analysis variables.

	N	Mean	SD	Q1	Median	Q3
	(1)	(2)	(3)	(4)	(5)	(6)
Panel A: Compustat Variables						
<i>Investment (CAPEX)</i>	26,560	0.057	0.065	0.020	0.037	0.069
<i>Investment (Comprehensive)</i>	26,560	0.095	0.126	0.027	0.054	0.106
<i>Disinvestment (Sale of PPE)</i>	19,495	0.014	0.044	0.000	0.000	0.007
<i>Expected Zombificationst (PC1)</i>	26,560	0.000	0.035	-0.014	-0.001	0.010
<i>Expected Zombificationst (PC2)</i>	26,560	0.003	0.029	-0.010	0.001	0.013
<i>Expected Zombification^{su} (PC1)</i>	23,349	0.001	0.017	-0.003	0.000	0.003
<i>Expected Zombification^{su} (PC2)</i>	23,349	0.000	0.016	-0.005	0.000	0.004
<i>Existing Zombification^{su}</i>	26,560	0.085	0.097	0.016	0.050	0.116
<i>Existing Zombificationst</i>	23,349	0.045	0.063	0.000	0.017	0.054
<i>Sales Growth</i>	26,473	0.102	0.301	-0.016	0.064	0.163
<i>Total Profitability</i>	26,514	0.096	0.114	0.058	0.100	0.151
<i>Capacity Overhang</i>	22,272	0.602	0.223	0.458	0.548	0.682
<i>Total Value</i>	26,468	1.051	1.236	0.383	0.737	1.286
<i>Patent Count</i>	25,998	0.006	0.019	0.000	0.000	0.002
<i>Citation Count</i>	25,998	0.055	0.246	0.000	0.000	0.002
<i>Tobin's Q</i>	26,560	1.859	1.219	1.152	1.481	2.102
<i>Size</i>	26,560	6.748	1.957	5.397	6.742	8.093
<i>Cash Flow</i>	26,560	0.158	0.124	0.095	0.147	0.216
<i>Stock Return</i>	26,560	1.214	0.876	0.690	1.033	1.454
<i>State GDP Growth</i>	26,560	0.019	0.021	0.008	0.019	0.033
<i>State Labor Force</i>	26,560	15.413	0.842	14.870	15.471	16.038
<i>Regional Inflation</i>	26,560	0.022	0.011	0.016	0.022	0.031
Panel B: Your-Economy Time-Series (YTS) Variables						
<i>Establishment Openings</i>	15,288	0.151	0.346	0.000	0.032	0.154
<i>Establishment Closures</i>	15,288	0.083	0.117	0.000	0.037	0.125
<i>Employment Growth</i>	15,535	0.081	0.514	-0.037	0.000	0.061
Panel C: Clarkson-Orbis Shipping Variables						
<i>All Ship Investment</i>	1,054	0.135	0.351	0.000	0.000	0.000
<i>New Ship Investment</i>	1,054	0.128	0.346	0.000	0.000	0.000
<i>Used Ship Investment</i>	1,054	0.007	0.034	0.000	0.000	0.000
<i>All Ship Disinvestment</i>	1,054	0.044	0.144	0.000	0.000	0.000
<i>Ship Sales</i>	1,054	0.028	0.101	0.000	0.000	0.000
<i>Ship Demolitions</i>	1,054	0.013	0.071	0.000	0.000	0.000
<i>Expected Zombification^s</i>	1,054	0.250	0.198	0.118	0.192	0.284
<i>Size</i>	1,054	6.501	4.245	4.303	6.973	9.736
<i>Cash Flow^s</i>	1,054	0.137	0.149	0.062	0.109	0.190

Table 2. Effect of Zombification on Syndicated Lending Terms

In this table, we report the results from panel regressions of loan-contract terms on a zombie indicator, controls, and industry and time fixed effects. The loan-contract terms are the natural log of a loan's all-drawn-in spread over LIBOR (column (1)); its number of covenants (column (2)); an indicator variable equal to one if it is secured and else zero (column (3)); and an indicator variable equal to one if there is a single lender and else zero (column (4)). While Panel A defines a zombie as a firm with an Altman Z-score below zero and an interest coverage below one (*Standard Zombie*), Panel B additionally requires that a zombie receives subsidized credit (*Subsidized Zombie*). The control variables are the natural log of the borrower's assets (*Size*); the number of years since it first appeared in Compustat (*Age*); its operating income scaled by assets (*Profitability*), its net property, plant, and equipment scaled by assets (*Tangibility*), its market-to-book ratio (*Market-to-Book*), its leverage ratio (*Leverage*), an indicator variable equal to one if the borrower is rated and else zero (*Rated*), the natural log of the outstanding loan amount (*Loan Size*), an indicator variable equal to one if the loan is a term loan and else zero (*Loan Type*), and the natural log of the loan's months-to-maturity (*Loan Maturity*). We include only new term loans and revolvers in our regressions. Industry fixed effects are based on the 50 Hoberg and Phillips (2016) industry definitions. Plain numbers are coefficient estimates, whereas those in square brackets are *t*-statistics computed from standard errors clustered at the borrower and year level. ***, **, and * indicate statistical significance at the 99%, 95%, and 90% confidence level, respectively.

	<i>Spread</i>	<i>Covenants</i>	<i>Collateral</i>	<i>Single Lender</i>
	(1)	(2)	(3)	(4)
Panel A: Zombie Indicator Based on Z-Score and Interest Coverage (Standard Zombie)				
<i>Standard Zombie</i>	-0.106*** [-3.18]	-0.327*** [-4.73]	-0.092*** [-3.67]	0.065** [2.28]
Firm & Loan Controls	Yes	Yes	Yes	Yes
Industry & Year FEs	Yes	Yes	Yes	Yes
R ²	0.47	0.24	0.26	0.56
Observations	39,884	42,438	42,438	10,197
Panel B: Zombie Indicator Based on Z-Score, Interest Coverage, and Subsidized Debt (Credit-Subsidized Zombie)				
<i>Subsidized Zombie</i>	-0.244*** [-4.35]	-0.338*** [-4.00]	-0.109*** [-3.76]	0.151** [2.47]
Firm & Loan Controls	Yes	Yes	Yes	Yes
Industry & Year FEs	Yes	Yes	Yes	Yes
R ²	0.49	0.22	0.28	0.53
Observations	35,047	37,215	37,215	7,796

Table 3. Effect of Uncertainty on Zombification: Time-Series Regressions

In this table, we report the results from panel regressions of a zombie indicator on each of several three-month-lagged uncertainty measures, controls, and firm fixed effects. While Panel A defines a zombie as a firm with an Altman Z -score below zero and an interest coverage below one (*Standard Zombie*), Panel B additionally requires that a zombie receives subsidized credit (*Subsidized Zombie*). The uncertainty measures include the CBOE volatility index (VIX); the newspaper-based equity market volatility tracker (EMV) of Baker et al. (2019); the economic policy uncertainty index (EPU) of Baker et al. (2016); the aggregate financial (FIN), real ($REAL$), and macroeconomic ($MACRO$) uncertainty indexes of Jurado et al. (2015); the firm size-weighted average of realized stock-return volatility over the last twelve months per industry (ARV); and the firm size-weighted average of implied stock return volatility over the last month per industry (AIV). We use the 50 Hoberg and Phillips (2016) industry definitions in our calculations of both ARV and AIV . The control variables include an indicator variable equal to one if one-year-lagged firm value is below \$50 million and else zero (*Small Firm*), an indicator variable equal to one if the firm's one-year-lagged age is below ten years and else zero (*Young Firm*), and one-year-lagged GDP growth (*GDP Growth*). Plain numbers are coefficient estimates, whereas those in square brackets are t -statistics computed from standard errors clustered at the industry and year levels. ***, **, and * indicate statistical significance at the 99%, 95%, and 90% confidence level, respectively.

		<i>Uncertainty Proxy</i>							
		VIX	EMV	EPU	FIN	$REAL$	$MACRO$	ARV	AIV
		(1)	(2)	(3)	(4)	(5)	(6)	(7)	(8)
Panel A: Zombie Indicator Based on Z-Score and Interest Coverage (Standard Zombie)									
<i>Uncertainty</i>		0.136*** [2.93]	0.206*** [4.66]	0.028*** [3.37]	0.210*** [4.62]	0.190 [1.04]	0.151*** [2.47]	1.215*** [3.27]	0.127*** [3.62]
Firm & Macro Controls		Yes	Yes	Yes	Yes	Yes	Yes	Yes	Yes
Firm FEs		Yes	Yes	Yes	Yes	Yes	Yes	Yes	Yes
R ²		0.01	0.01	0.01	0.01	0.01	0.01	0.01	0.01
Observations		84,281	84,281	84,281	84,281	84,281	84,281	84,277	67,163
Panel B: Zombie Indicator Based on Z-Score, Interest Coverage, and Subsidized Credit (Credit-Subsidized Zombie)									
<i>Uncertainty</i>		0.058* [1.80]	0.097*** [3.04]	0.006 [1.07]	0.103*** [3.51]	0.103 [1.07]	0.078* [1.80]	0.512** [2.56]	0.059*** [3.54]
Firm & Macro Controls		Yes	Yes	Yes	Yes	Yes	Yes	Yes	Yes
Firm FEs		Yes	Yes	Yes	Yes	Yes	Yes	Yes	Yes
R ²		0.01	0.01	0.01	0.01	0.01	0.01	0.01	0.01
Observations		65,548	65,548	65,548	65,548	65,548	65,548	65,545	57,164

Table 4. Principal Component Analysis of Uncertainty Measures

In this table, we report the results from a principal component analysis (PCA) run on our eight uncertainty measures. While Panel A gives the slope coefficients of the eight uncertainty measures on the first four principal components (*PC1* to *PC4*), Panel B reports diagnostic statistics derived from that analysis. The uncertainty measures include the CBOE volatility index (*VIX*); the newspaper-based equity market volatility tracker (*EMV*) of Baker et al. (2019); the economic policy uncertainty index (*EPU*) of Baker et al. (2016); the aggregate financial (*FIN*), real (*REAL*), and macroeconomic (*MACRO*) uncertainty indexes of Jurado et al. (2015); the firm size-weighted average of realized stock-return volatility over the last twelve months per industry (*ARV*); and the firm size-weighted average of implied stock return volatility over the last month per industry (*AIV*). We use the 50 Hoberg and Phillips (2016) industry definitions in our calculations of both *ARV* and *AIV*. The diagnostics include the eigenvalue, the standard deviation, and the explained variation of the first four principal components.

	Principal Component			
	(<i>PC1</i>)	(<i>PC2</i>)	(<i>PC3</i>)	(<i>PC4</i>)
	(1)	(2)	(3)	(4)
Panel A: Principal Component Loadings				
<i>VIX</i>	0.39	-0.23	-0.21	0.09
<i>EMV</i>	0.40	-0.23	0.15	0.13
<i>EPU</i>	0.25	0.59	0.15	0.63
<i>FIN</i>	0.41	-0.14	-0.11	0.25
<i>REAL</i>	0.31	0.56	0.08	-0.28
<i>MACRO</i>	0.37	0.26	-0.18	-0.63
<i>ARV</i>	0.37	-0.25	-0.46	0.06
<i>AIV</i>	0.30	-0.29	0.81	-0.17
Panel B: Principal Component Diagnostics				
<i>Eigenvalue</i>	5.21	1.36	0.62	0.42
<i>Std. Deviation</i>	2.28	1.17	0.79	0.65
<i>Explained Variation</i>	65%	17%	8%	5%

Table 5. Out-of-Sample Predictive Zombification Regressions

In this table, we report the results from Mincer and Zarnowitz (1969) out-of-sample predictive regressions of our zombie firm indicator variables (*Standard Zombie* in columns (1) and (2) and *Subsidized Zombie* in columns (3) and (4)) on *Expected Zombification*. Specifically, the dependent variables are indicator variables for a firm’s zombie status over a given year, while the predictive variable is measured as of the start of the year. While columns (1) and (2) define a zombie as a firm with an Altman Z-score below zero and an interest coverage below one (*Standard Zombie*), columns (3) and (4) additionally require that a zombie receives subsidized credit (*Subsidized Zombie*). To compute *Expected Zombification*, we separately run twelve-year rolling-window regressions of a zombie indicator on either the first (odd-numbered columns) or the first two (even-numbered columns) principal components extracted from our uncertainty proxies, controls, and firm fixed effects per industry. While the zombification variables in columns (1) and (2) choose as zombies those firms with an Altman Z-score below zero and an interest coverage below one (*Standard Zombie*), those in columns (3) and (4) additionally require that zombies receive subsidized credit (*Subsidized Zombie*). The controls include an indicator variable equal to one if one-year-lagged firm value is below \$50 million and else zero (*Small Firm*), an indicator variable equal to one if the firm’s one-year-lagged age is below ten years and else zero (*Young Firm*), and one-year-lagged GDP growth (*GDP Growth*). We use the 50 Hoberg and Phillips (2016) industry classification to define our industries. We next combine the slope estimates of the principal component(s) with their end-of-window values to calculate *Expected Zombification*. Plain numbers are coefficient estimates, whereas those in square brackets are *t*-statistics computed from standard errors clustered at the firm level. ***, **, and * indicate statistical significance at the 99%, 95%, and 90% confidence level, respectively.

	Zombification Proxy Based On:			
	Z-Score and Interest Coverage (Standard Zombie)		Z-Score, Interest Coverage, and Subsidized Credit (Credit-Subsidized Zombie)	
	# Principal Components		# Principal Components	
	One	Two	One	Two
	(1)	(2)	(3)	(4)
<i>Expected Zombification</i>	0.222*** [3.71]	0.589*** [8.64]	0.366*** [3.71]	0.281** [2.50]
Constant	0.118*** [33.76]	0.116*** [33.35]	0.055*** [24.20]	0.055*** [24.30]
R ²	0.01	0.01	0.01	0.01
Observations	41,575	41,575	34,513	34,513

Table 6. Real Effects of Zombie Firms on Non-Zombie Firms' Investment: Public Firms Sample

In this table, we report the results from panel regressions of public firms' investment on expected zombification (*Expected Zombification*), controls, and firm fixed effects. While we use CAPEX scaled by assets as investment proxy in columns (1) to (4), we use the sum of CAPEX and M&A expenses scaled by assets in columns (5) to (8). To compute *Expected Zombification*, we separately run twelve-year rolling-window regressions of a zombie indicator on either the first (odd-numbered columns) or the first two (even-numbered columns) principal components extracted from our uncertainty proxies, controls, and firm fixed effects per industry. While the zombification variables in columns (1) to (4) choose as zombies those firms with an Altman Z-score below zero and an interest coverage below one (*Standard Zombie*), those in columns (5) to (8) additionally require that zombies receive subsidized credit (*Subsidized Zombie*). The controls include an indicator variable equal to one if one-year-lagged firm value is below \$50 million and else zero (*Small Firm*), an indicator variable equal to one if the firm's one-year-lagged age is below ten years and else zero (*Young Firm*), and one-year-lagged GDP growth (*GDP Growth*). We use the 50 Hoberg and Phillips (2016) industry classification to define our industries. We next combine the slope estimates of the principal component(s) with their end-of-window values to calculate *Expected Zombification*. Our controls are a firm's one-year lagged assets (*Size*), its one-year lagged sum of EBIT, depreciation, and R&D expenses scaled by two-year lagged assets (*Cash Flow*), its compounded stock return over the subsequent 36 months (*Stock Return*), its one-year-lagged Tobin's Q (*Tobin's Q*), and macro variables consisting of *State GDP Growth*, *State Labor Force*, and *Regional Inflation* (coefficients omitted for brevity). Plain numbers are coefficient estimates, whereas those in square brackets are *t*-statistics computed from standard errors clustered at the firm level. ***, **, and * indicate statistical significance at the 99%, 95%, and 90% confidence level, respectively.

<i>Zombification Proxy Based On:</i>																								
Z-Score and Interest Coverage (Standard Zombie)			Z-Score, Interest Coverage, and Subsidized Credit (Credit-Subsidized Zombie)			Investment Proxy			Comprehensive															
Investment Proxy			Comprehensive			CAPEX			Comprehensive															
CAPEX			Comprehensive			CAPEX			Comprehensive															
# Principal Components			# Principal Components			# Principal Components			# Principal Components															
One	Two	(1)	One	Two	(2)	One	Two	(3)	One	Two	(4)	One	Two	(5)	One	Two	(6)	One	Two	(7)	One	Two	(8)	
<i>Expected Zombification</i>	-0.054***	[-5.91]	-0.076***	-0.180***	-0.185***	-0.062***	-0.055***	-0.292***	-0.284***															
<i>Size</i>	-0.013***	[-13.30]	-0.013***	-0.035***	-0.035***	-0.014***	-0.014***	-0.042***	-0.041***															
<i>Cash Flow</i>	0.060***	[10.60]	0.059***	0.132***	0.130***	0.060***	0.060***	0.129***	0.129***															
<i>Stock Return</i>	-0.003***	[-6.27]	-0.003***	-0.010***	-0.010***	-0.004***	-0.004***	-0.012***	-0.012***															
<i>Tobin's Q</i>	0.007***	[11.12]	0.007***	0.017***	0.017***	0.008***	0.009***	0.020***	0.021***															
Macro Controls	Yes	Yes	Yes	Yes	Yes	Yes	Yes	Yes	Yes															
Firm FEs	Yes	Yes	Yes	Yes	Yes	Yes	Yes	Yes	Yes															
R ²	0.10	0.10	0.10	0.07	0.07	0.10	0.10	0.08	0.08															
Observations	26,560	26,560	26,560	26,560	26,560	23,349	23,349	23,349	23,349															

Table 7. Real Effects of Zombie Firms on Non-Zombie Firms' Disinvestment: Public Firms Sample

In this table, we report the results from panel regressions of public firms' disinvestment on expected zombification (*Expected Zombification*), control variables, and firm fixed effects. We use the sale of property, plant, and equipment (PPE) scaled by PPE to measure disinvestment. To compute *Expected Zombification*, we separately run twelve-year rolling-window regressions of a zombie indicator on either the first (odd-numbered columns) or the first two (even-numbered) principal components extracted from our uncertainty proxies, controls, and firm fixed effects per industry. While the zombification variables in columns (1) and (2) choose as zombies those firms with an Altman Z-score below zero and an interest coverage below one (*Standard Zombie*), those in columns (3) and (4) additionally require that zombies receive subsidized credit (*Subsidized Zombie*). The controls include an indicator variable equal to one if one-year-lagged firm value is below \$50 million and else zero (*Small Firm*), an indicator variable equal to one if the firm's one-year-lagged age is below ten years and else zero (*Young Firm*), and one-year-lagged GDP growth (*GDP Growth*). We use the 50 Hoberg and Phillips (2016) industry classification to define our industries. We next combine the slope estimates of the principal component(s) with their end-of-window values to calculate *Expected Zombification*. Our controls are a firm's one-year lagged assets (*Size*), its one-year lagged sum of EBIT, depreciation, and R&D expenses scaled by two-year lagged assets (*Cash Flow*), its compounded stock return over the subsequent 36 months (*Stock Return*), its one-year-lagged Tobin's Q (*Tobin's Q*), and macro variables consisting of *State GDP Growth*, *State Labor Force*, and *Regional Inflation* (coefficients omitted for brevity). Plain numbers are coefficient estimates, whereas those in square brackets are *t*-statistics computed from standard errors clustered at the firm level. ***, **, and * indicate statistical significance at the 99%, 95%, and 90% confidence level, respectively.

	Disinvestment Proxy is Sale of PPE			
	Zombification Proxy Based On:			
	Z-Score and Interest Coverage (Standard Zombie)		Z-Score, Interest Coverage, and Subsidized Credit (Credit-Subsidized Zombie)	
	# Principal Components		# Principal Components	
	One	Two	One	Two
	(1)	(2)	(3)	(4)
<i>Expected Zombification</i>	-0.049*** [-4.80]	-0.049*** [-4.10]	-0.054*** [-2.91]	-0.084*** [-3.96]
<i>Size</i>	-0.004*** [-4.07]	-0.003*** [-3.88]	-0.003*** [-3.83]	-0.003*** [-3.86]
<i>Cash Flow</i>	-0.013*** [-2.77]	-0.013*** [-2.84]	-0.017*** [-3.63]	-0.017*** [-3.66]
<i>Stock Return</i>	0.000 [-0.43]	0.000 [-0.44]	0.000 [-0.52]	0.000 [-0.56]
<i>Tobin's Q</i>	-0.001* [-1.92]	-0.001* [-1.75]	-0.001 [-1.64]	-0.001* [-1.69]
Macro Controls	Yes	Yes	Yes	Yes
Firm FEs	Yes	Yes	Yes	Yes
R ²	0.01	0.01	0.01	0.01
Observations	19,495	19,495	16,773	16,773

Table 8. Real Effects of Zombie Firms on Non-Zombie Firms' Investment: Expected and Existing Zombification

In this table, we report the results from panel regressions of public firms' investment on expected zombification (*Expected Zombification*), existing zombification (*Existing Zombification*), controls, and firm fixed effects. While we use CAPEX scaled by assets as investment proxy in columns (1) to (3) and (7) to (9), we use the sum of CAPEX and M&A expenses scaled by assets in columns (4) to (6) and (10) to (12). To compute *Expected Zombification*, we separately run twelve-year rolling-window regressions of a zombie indicator on either the first (odd-numbered columns) or the first two (even-numbered columns) principal components extracted from our uncertainty proxies, controls, and firm fixed effects per industry. While the zombification variables in columns (1) to (6) choose as zombies those firms with an Altman Z-score below zero and an interest coverage below one (*Standard Zombie*), those in columns (7) to (12) additionally require that zombies receive subsidized credit (*Subsidized Zombie*). The controls include an indicator variable equal to one if one-year-lagged firm value is below \$50 million and else zero (*Small Firm*), an indicator variable equal to one if the firm's one-year-lagged age is below ten years and else zero (*Young Firm*), and one-year-lagged GDP growth (*GDP Growth*). We use the 50 Hoberg and Phillips (2016) industry classification to define our industries. We next combine the slope estimates of the principal component(s) with their end-of-window values to calculate *Expected Zombification*. *Existing Zombification* is the share of zombie firms in an industry in a given year. Our controls are a firm's one-year lagged assets (*Size*), its one-year lagged sum of EBIT, depreciation, and R&D expenses scaled by two-year lagged assets (*Cash Flow*), its compounded stock return over the subsequent 36 months (*Stock Return*), its one-year-lagged Tobin's Q (*Tobin's Q*), and macro variables consisting of *State GDP Growth*, *State Labor Force*, and *Regional Inflation* (coefficients omitted for brevity). Plain numbers are coefficient estimates, whereas those in square brackets are *t*-statistics computed from standard errors clustered at the firm level. ***, **, and * indicate statistical significance at the 99%, 95%, and 90% confidence level, respectively.

Zombification Proxy Based On:

	Z-Score and Interest Coverage (Standard Zombie)						Z-Score, Interest Coverage, and Subsidized Credit (Credit-Subsidized/Zombie)					
	<i>Investment Proxy</i>			<i>Comprehensive</i>			<i>Investment Proxy</i>			<i>Comprehensive</i>		
	CAPEX		# Principal Components	CAPEX		# Principal Components	CAPEX		# Principal Components	CAPEX		# Principal Components
	One	One	One	One	One	One	One	One	One	One	One	One
	(1)	(2)	(3)	(4)	(5)	(6)	(7)	(8)	(9)	(10)	(11)	(12)
<i>Expected Zombification</i>	-0.054*** [-5.91]	-0.043*** [-4.30]	-0.027*** [-3.69]	-0.188*** [-7.17]	-0.030 [-1.67]	-0.178*** [-6.57]	-0.062*** [-3.77]	-0.020** [-2.47]	-0.056*** [-3.13]	-0.304*** [-5.40]	-0.029 [-1.04]	-0.298*** [-5.09]
<i>Existing Zombification</i>												
<i>Size</i>	-0.013*** [-13.30]	-0.013*** [-13.10]	-0.013*** [-13.25]	-0.037*** [-15.17]	-0.036*** [-14.76]	-0.035*** [-14.92]	-0.014*** [-13.02]	-0.014*** [-12.98]	-0.014*** [-13.03]	-0.043*** [-15.76]	-0.043*** [-15.59]	-0.042*** [-15.61]
<i>Cash Flow</i>	0.060*** [10.60]	0.058*** [10.43]	0.059*** [10.50]	0.134*** [11.70]	0.132*** [11.45]	0.132*** [11.70]	0.060*** [9.09]	0.059*** [9.02]	0.060*** [9.05]	0.131*** [10.25]	0.130*** [10.17]	0.130*** [10.30]
<i>Stock Return</i>	-0.003*** [-6.27]	-0.003*** [-6.35]	-0.003*** [-6.21]	-0.010*** [-9.24]	-0.011*** [-9.55]	-0.010*** [-9.40]	-0.004*** [-6.66]	-0.004*** [-6.72]	-0.004*** [-6.65]	-0.012*** [-9.96]	-0.013*** [-10.18]	-0.012*** [-9.92]
<i>Tobin's Q</i>	0.007*** [11.12]	0.008*** [11.60]	0.007*** [11.18]	0.018*** [11.12]	0.019*** [11.79]	0.017*** [10.79]	0.008*** [11.19]	0.009*** [11.44]	0.008*** [11.20]	0.021*** [11.59]	0.022*** [12.00]	0.020*** [11.30]
Macro Controls	Yes	Yes	Yes	Yes	Yes	Yes	Yes	Yes	Yes	Yes	Yes	Yes
Firm FEs	Yes	Yes	Yes	Yes	Yes	Yes	Yes	Yes	Yes	Yes	Yes	Yes
R ²	0.10	0.10	0.10	0.07	0.07	0.07	0.10	0.10	0.10	0.08	0.08	0.08
Observations	26,560	26,560	26,560	26,560	26,560	26,560	23,349	23,349	23,349	23,349	23,349	23,349

Table 9. Real Effects of Zombie Firms on Non-Zombie Firms' Disinvestment: Expected and Existing Zombification

In this table, we report the results from panel regressions of public firms' disinvestment on expected zombification (*Expected Zombification*), control variables, and firm fixed effects. We use the sale of property, plant, and equipment (PPE) scaled by PPE to measure disinvestment. To compute *Expected Zombification*, we separately run twelve-year rolling-window regressions of a zombie indicator on either the first (odd-numbered columns) or the first two (even-numbered) principal components extracted from our uncertainty proxies, controls, and firm fixed effects per industry. While the zombification variables in columns (1) to (3) choose as zombies those firms with an Altman Z-score below zero and an interest coverage below one (*Standard Zombie*), those in columns (4) to (6) additionally require that zombies receive subsidized credit (*Subsidized Zombie*). The controls include an indicator variable equal to one if one-year-lagged firm value is below \$50 million and else zero (*Small Firm*), an indicator variable equal to one if the firm's one-year-lagged age is below ten years and else zero (*Young Firm*), and one-year-lagged GDP growth (*GDP Growth*). We use the 50 Hoberg and Phillips (2016) industry classification to define our industries. We next combine the slope estimates of the principal component(s) with their end-of-window values to calculate *Expected Zombification*. *Existing Zombification* is the share of zombie firms in an industry in a given year. Our controls are a firm's one-year lagged assets (*Size*), its one-year lagged sum of EBIT, depreciation, and R&D expenses scaled by two-year lagged assets (*Cash Flow*), its compounded stock return over the subsequent 36 months (*Stock Return*), its one-year-lagged Tobin's Q (*Tobin's Q*), and macro variables consisting of *State GDP Growth*, *State Labor Force*, and *Regional Inflation* (coefficients omitted for brevity). Plain numbers are coefficient estimates, whereas those in square brackets are *t*-statistics computed from standard errors clustered at the firm level. ***, **, and * indicate statistical significance at the 99%, 95%, and 90% confidence level, respectively.

	<i>Disinvestment Proxy is Sale of PPE</i>					
	<i>Zombification Proxy Based On:</i>					
	Z-Score and Interest Coverage (Standard Zombie)			Z-Score, Interest Coverage, and Subsidized Credit (Credit-Subsidized Zombie)		
	# Principal Components			# Principal Components		
	One	One	One	One	One	One
	(1)	(2)	(3)	(4)	(5)	(6)
<i>Expected Zombification</i>	-0.049*** [-4.80]		-0.050*** [-4.75]	-0.054*** [-2.91]		-0.052** [-2.64]
<i>Existing Zombification</i>		-0.007 [-1.16]	0.001 [0.11]		-0.011 [-1.28]	-0.004 [-0.45]
<i>Size</i>	-0.004*** [-4.07]	-0.003*** [-3.79]	-0.004*** [-4.07]	-0.003*** [-3.83]	-0.003*** [-3.71]	-0.003*** [-3.83]
<i>Cash Flow</i>	-0.013*** [-2.77]	-0.013*** [-2.87]	-0.013*** [-2.78]	-0.017*** [-3.63]	-0.017*** [-3.68]	-0.017*** [-3.65]
<i>Stock Return</i>	0.000 [-0.43]	0.000 [-0.57]	0.000 [-0.43]	0.000 [-0.52]	0.000 [-0.59]	0.000 [-0.52]
<i>Tobin's Q</i>	-0.001* [-1.92]	-0.001 [-1.28]	-0.001* [-1.93]	-0.001 [-1.64]	-0.001 [-1.38]	-0.001 [-1.63]
Macro Controls	Yes	Yes	Yes	Yes	Yes	Yes
Firm FEs	Yes	Yes	Yes	Yes	Yes	Yes
R ²	0.01	0.01	0.00	0.01	0.01	0.00
Observations	19,495	19,495	19,495	16,773	16,773	16,773

Table 10. Real Effects of Zombie Firms on Non-Zombie Firms' Performance: Public Firms Sample

In this table, we report the results from panel regressions of public firms' real outcome variables on expected zombification (*Expected Zombification*), controls, and firm fixed effects. Our outcome variables are *Sales Growth* over the past year (columns (1) and (2)), *Total Profitability* ((3) and (4)), the *Capacity Overhang* measure of Aretz and Pope (2018) ((5) and (6)), and *Total Value* from Peters and Taylor (2017) ((7) and (8)). To compute *Expected Zombification*, we separately run twelve-year rolling-window regressions of a zombie indicator on either the first (odd-numbered columns) or the first two (even-numbered) principal components extracted from our uncertainty proxies, controls, and firm fixed effects per industry. While the zombification variables in Panel A choose as zombies those firms with an Altman Z-score below zero and an interest coverage below one (*Standard Zombie*), those in Panel B additionally require that zombies receive subsidized credit (*Subsidized Zombie*). The controls include an indicator variable equal to one if one-year-lagged firm value is below \$50 million and else zero (*Small Firm*), an indicator variable equal to one if the firm's one-year-lagged age is below ten years and else zero (*Young Firm*), and one-year-lagged GDP growth (*GDP Growth*). We use the 50 Hoberg and Phillips (2016) industry classification to define our industries. We next combine the slope estimates of the principal component(s) with their end-of-window values to calculate *Expected Zombification*. Our controls are a firm's one-year lagged assets (*Size*), its one-year lagged sum of EBIT, depreciation, and R&D expenses scaled by two-year lagged assets (*Cash Flow*), its compounded stock return over the subsequent 36 months (*Stock Return*), its one-year-lagged Tobin's Q (*Tobin's Q*), and macro variables consisting of *State GDP Growth*, *State Labor Force*, and *Regional Inflation* (coefficients omitted for brevity). Plain numbers are coefficient estimates, whereas those in square brackets are *t*-statistics computed from standard errors clustered at the firm level. ***, **, and * indicate statistical significance at the 99%, 95%, and 90% confidence level, respectively.

<i>Firm Performance Proxy</i>									
<i>Sales Growth</i>			<i>Total Profitability</i>			<i>Capacity Overhang</i>			<i>Total Value</i>
# Principal Components		# Principal Components		# Principal Components		# Principal Components		# Principal Components	
One	Two	One	Two	One	Two	One	Two	One	Two
(1)	(2)	(3)	(4)	(5)	(6)	(7)	(8)		
Panel A: Zombie Indicator Based on Z-Score and Interest Coverage (Standard Zombie)									
<i>Expected Zombification</i>	-0.735*** [-10.91]	-0.597*** [-7.45]	-0.039** [-2.55]	-0.045** [-2.37]	0.182*** [3.95]	0.165*** [3.30]	-1.280*** [-5.16]	-1.008*** [-3.70]	
<i>Size</i>	-0.081*** [-11.46]	-0.078*** [-11.01]	-0.003* [-1.75]	-0.003 [-1.65]	0.039*** [9.69]	0.039*** [9.68]	-0.201*** [-7.09]	-0.197*** [-6.95]	
<i>Cash Flow</i>	-0.458*** [-8.00]	-0.465*** [-8.15]	0.289*** [18.59]	0.288*** [18.58]	-0.281*** [-12.90]	-0.280*** [-12.87]	1.624*** [11.18]	1.619*** [11.13]	
<i>Stock Return</i>	0.005 [1.35]	0.004 [1.19]	0.008*** [10.04]	0.008*** [10.03]	-0.012*** [-6.20]	-0.012*** [-6.12]	-0.039*** [-3.94]	-0.041*** [-4.15]	
<i>Tobin's Q</i>	0.463*** [4.63]	0.628*** [6.36]	0.048** [2.12]	0.052** [2.34]	-0.248*** [-4.03]	-0.284*** [-4.68]			
Macro Controls	Yes	Yes	Yes	Yes	Yes	Yes	Yes	Yes	Yes
Firm FEs	Yes	Yes	Yes	Yes	Yes	Yes	Yes	Yes	Yes
R ²	0.07	0.07	0.18	0.18	0.07	0.07	0.06	0.06	0.06
Observations	26,485	26,485	26,528	26,528	22,238	22,238	26,547	26,547	26,547

<i>Firm Performance Proxy</i>									
<i>Sales Growth</i>			<i>Total Profitability</i>			<i>Capacity Overhang</i>			<i>Total Value</i>
# Principal Components		# Principal Components		# Principal Components		# Principal Components		# Principal Components	
One	Two	One	Two	One	Two	One	Two	One	Two
(1)	(2)	(3)	(4)	(5)	(6)	(7)	(8)		
Panel B: Zombie Indicator Based on Z-Score, Interest Coverage, and Subsidized Credit (Credit-Subsidized Zombie)									
<i>Expected Zombification</i>	-1.283*** [-8.76]	-1.171*** [-6.09]	-0.128*** [-2.71]	-0.126** [-2.60]	0.326*** [3.51]	0.304*** [2.87]	-1.450*** [-3.03]	-1.823*** [-3.43]	
<i>Size</i>	-0.085*** [-11.02]	-0.084*** [-10.91]	-0.003 [-1.60]	-0.003 [-1.59]	0.034*** [7.16]	0.034*** [7.22]	-0.168*** [-6.12]	-0.168*** [-6.13]	
<i>Cash Flow</i>	-0.591*** [-8.64]	-0.594*** [-8.67]	0.270*** [14.08]	0.270*** [14.08]	-0.286*** [-11.21]	-0.286*** [-11.21]	1.464*** [9.93]	1.461*** [9.91]	
<i>Stock Return</i>	-0.001 [-0.24]	-0.002 [-0.42]	0.009*** [8.48]	0.009*** [8.45]	-0.012*** [-5.46]	-0.012*** [-5.38]	-0.038*** [-4.04]	-0.038*** [-4.14]	
<i>Tobin's Q</i>	0.071*** [10.50]	0.072*** [10.73]	0.018*** [11.43]	0.018*** [11.46]	-0.026*** [-7.89]	-0.026*** [-8.05]			
Macro Controls	Yes	Yes	Yes	Yes	Yes	Yes	Yes	Yes	Yes
Firm FEs	Yes	Yes	Yes	Yes	Yes	Yes	Yes	Yes	Yes
R ²	0.07	0.07	0.13	0.13	0.07	0.07	0.05	0.05	0.05
Observations	23,290	23,290	23,195	23,195	19,217	19,217	23,347	23,347	23,347

Table 11. Real Effects of Zombie Firms on Non-Zombie Firms' Investment and Disinvestment: Establishment-Level Evidence

In this table, we report the results from panel regressions of public firms' establishment openings (columns (1) and (2)), establishment closures ((3) and (4)), and employment growth ((5) and (6)) on expected zombification (*Expected Zombification*), controls, and firm fixed effects. To compute *Expected Zombification*, we separately run twelve-year rolling-window regressions of a zombie indicator on either the first (odd-numbered columns) or the first two (even-numbered) principal components extracted from our uncertainty proxies, controls, and firm fixed effects per industry. While the zombification variables in Panel A choose as zombies those firms with an Altman Z-score below zero and an interest coverage below one (*Standard Zombie*), those in Panel B additionally require that zombies receive subsidized credit (*Subsidized Zombie*). The controls include an indicator variable equal to one if one-year-lagged firm value is below \$50 million and else zero (*Small Firm*), an indicator variable equal to one if the firm's one-year-lagged age is below ten years and else zero (*Young Firm*), and one-year-lagged GDP growth (*GDP Growth*). We use the 50 Hoberg and Phillips (2016) industry classification to define our industries. We next combine the slope estimates of the principal component(s) with their end-of-window values to calculate *Expected Zombification*. Our controls are a firm's one-year lagged assets (*Size*), its one-year lagged sum of EBIT, depreciation, and R&D expenses scaled by two-year lagged assets (*Cash Flow*), its compounded stock return over the subsequent 36 months (*Stock Return*), its one-year-lagged Tobin's Q (*Tobin's Q*), and macro variables consisting of *State GDP Growth*, *State Labor Force*, and *Regional Inflation* (coefficients omitted for brevity). Plain numbers are coefficient estimates, whereas those in square brackets are *t*-statistics computed from standard errors clustered at the firm level. ***, **, and * indicate statistical significance at the 99%, 95%, and 90% confidence level, respectively.

	<i>Investment and Disinvestment Proxy</i>					
	<i>Establishment Openings</i>		<i>Establishment Closures</i>		<i>Employment Growth</i>	
	# Principal Components		# Principal Components		# Principal Components	
	One	Two	One	Two	One	Two
	(1)	(2)	(3)	(4)	(5)	(6)
Panel A: Zombie Indicator Based on Z-Score and Interest Coverage (Standard Zombie)						
<i>Expected Zombification</i>	-0.528***	-0.497***	-0.056*	-0.107***	-0.440***	-0.494**
	[-5.59]	[-4.10]	[-1.70]	[-2.67]	[-2.76]	[-2.53]
<i>Size</i>	-0.027***	-0.027***	0.003	0.003	-0.070***	-0.071***
	[-3.14]	[-3.16]	[1.26]	[1.10]	[-5.12]	[-5.15]
<i>Cash Flow</i>	0.132***	0.132***	-0.041***	-0.041***	0.129	0.130
	[3.18]	[3.16]	[-2.79]	[-2.78]	[1.54]	[1.55]
<i>Stock Return</i>	-0.003	-0.003	-0.001	-0.001	0.004	0.004
	[-0.63]	[-0.71]	[-0.84]	[-0.87]	[0.47]	[0.44]
<i>Tobin's Q</i>	0.001	0.002	-0.002	-0.002	0.010	0.010
	[0.11]	[0.35]	[-0.91]	[-0.99]	[0.81]	[0.87]
Macro Controls	Yes	Yes	Yes	Yes	Yes	Yes
Firm FES	Yes	Yes	Yes	Yes	Yes	Yes
R ²	0.01	0.01	0.01	0.01	0.01	0.01
Observations	14,025	14,025	14,025	14,025	14,201	14,201

	<i>Investment and Disinvestment Proxy</i>					
	<i>Establishment Openings</i>		<i>Establishment Closures</i>		<i>Employment Growth</i>	
	# Principal Components		# Principal Components		# Principal Components	
	One	Two	One	Two	One	Two
	(1)	(2)	(3)	(4)	(5)	(6)
Panel B: Zombie Indicator Based on Z-Score, Interest Coverage, and Subsidized Credit (Credit-Subsidized Zombie)						
<i>Expected Zombification</i>	-0.822*** [-4.18]	-0.774*** [-3.16]	-0.029 [-0.41]	-0.097 [-1.22]	-1.093*** [-3.29]	-1.167*** [-2.93]
<i>Size</i>	-0.032*** [-3.24]	-0.030*** [-3.12]	0.005 [1.73]	0.005 [1.68]	-0.078*** [-4.83]	-0.077*** [-4.80]
<i>Cash Flow</i>	0.115** [2.13]	0.113** [2.11]	-0.043** [-2.65]	-0.043** [-2.64]	0.061 [0.55]	0.059 [0.54]
<i>Stock Return</i>	-0.005 [-1.02]	-0.005 [-1.05]	-0.002 [-1.08]	-0.002 [-1.10]	0.004 [0.39]	0.003 [0.36]
<i>Tobin's Q</i>	0.008 [1.11]	0.009 [1.25]	-0.002 [-0.78]	-0.002 [-0.84]	0.031** [1.98]	0.032** [2.06]
Macro Controls	Yes	Yes	Yes	Yes	Yes	Yes
Firm FEs	Yes	Yes	Yes	Yes	Yes	Yes
R ²	0.01	0.01	0.01	0.01	0.01	0.01
Observations	12,198	12,198	12,198	12,198	12,370	12,370

Table 12. Real Effects of Zombie Firms on Non-Zombie Firms' Investment: Industry Markups

In this table, we report the results from panel regressions of public firms' investment on expected zombification (*Expected Zombification*), controls, and firm fixed effects. We use CAPEX scaled by assets as our investment proxy. Even-numbered columns contain estimates from the subsample of firms belonging to industries (4-digit SIC codes) with high markups, in the top quartile of the annual distribution of average markups across all firms in each 4-digit SIC industry. Odd-numbered columns contain estimates from the subsample of firms belonging to industries in the bottom quartile of the annual distribution of average markups. Markups are calculated at the industry-year level using data from the NBER-CES Manufacturing Industry Database, and following the definition of Bustamante and Donangelo (2017). Specifically, for each industry and year, the average markup is defined as the value of sales plus the change in inventories minus payroll and cost of materials, all divided by the value of sales plus the change in inventories. To compute *Expected Zombification*, we separately run twelve-year rolling-window regressions of a zombie indicator on either the first (columns (1), (2), (5), and (6)) or the first two (columns (3), (4), (7), and (8)) principal components extracted from our uncertainty proxies, controls, and firm fixed effects per industry. While the zombification variables in columns (1) to (4) choose as zombies those firms with an Altman Z-score below zero and an interest coverage below one (*Standard Zombie*), those in columns (5) to (8) additionally require that zombies receive subsidized credit (*Subsidized Zombie*). The controls include an indicator variable equal to one if one-year-lagged firm value is below \$50 million and else zero (*Small Firm*), an indicator variable equal to one if the firm's one-year-lagged age is below ten years and else zero (*Young Firm*), and one-year-lagged GDP growth (*GDP Growth*). We use the 50 Hoberg and Phillips (2016) product market definitions to define our industries. We next combine the slope estimates of the principal component(s) with their end-of-window values to calculate *Expected Zombification*. Our controls are a firm's one-year lagged assets (*Size*), its one-year lagged sum of EBIT, depreciation, and R&D expenses scaled by two-year lagged assets (*Cash Flow*), its compounded stock return over the subsequent 36 months (*Stock Return*), its one-year-lagged Tobin's Q (*Tobin's Q*), and macro variables consisting of *State GDP Growth*, *State Labor Force*, and *Regional Inflation* (coefficients omitted for brevity). Plain numbers are coefficient estimates, whereas those in square brackets are *t*-statistics computed from standard errors clustered at the firm level. ***, **, and * indicate statistical significance at the 99%, 95%, and 90% confidence level, respectively.

Zombification Proxy Based On:

	Z-Score and Interest Coverage (Standard Zombie)				Z-Score, Interest Coverage, and Subsidized Credit (Credit-Subsidized Zombie)			
	Principal Component		Two		Principal Component		Two	
	One	Two	Markup	Low	High	Low	High	Low
	(1)	(2)	(3)	(4)	(5)	(6)	(7)	(8)
<i>Expected Zombification</i>	-0.015 [-0.29]	-0.124*** [-4.10]	0.018 [0.48]	-0.177*** [-4.48]	-0.076 [-0.88]	-0.167*** [-3.22]	0.091 [1.68]	-0.113 [-1.62]
<i>Size</i>	-0.006* [-1.93]	-0.015*** [-4.17]	-0.005* [-1.93]	-0.014*** [-4.15]	-0.006** [-2.23]	-0.013*** [-3.92]	-0.005* [-1.73]	-0.012*** [-3.76]
<i>Cash Flow</i>	0.016 [1.45]	0.055*** [3.53]	0.015 [1.43]	0.053*** [3.58]	0.012 [1.33]	0.076*** [5.72]	0.012 [1.32]	0.074*** [5.57]
<i>Stock Return</i>	-0.001 [-0.58]	-0.004*** [-3.81]	-0.001 [-0.57]	-0.004*** [-3.86]	-0.003** [-2.61]	-0.003*** [-3.15]	-0.003*** [-2.40]	-0.003*** [-3.19]
<i>Tobin's Q</i>	0.006*** [4.80]	0.006** [1.99]	0.006*** [5.18]	0.006** [2.02]	0.005*** [4.92]	0.008*** [3.72]	0.005*** [5.40]	0.008*** [3.98]
Macro Controls	Yes	Yes	Yes	Yes	Yes	Yes	Yes	Yes
Firm FEs	Yes	Yes	Yes	Yes	Yes	Yes	Yes	Yes
R ²	0.10	0.10	0.10	0.11	0.10	0.12	0.10	0.12
Observations	1,508	2,584	1,508	2,584	1,456	2,229	1,456	2,229

Table 13. Real Effects of Zombie Firms on Non-Zombie Firms' Innovation

In this table, we report the results from panel regressions of public firms' innovation variables on expected zombification (*Expected Zombification*), controls, and firm fixed effects. Our outcome variables are *Patent Count*, or the count of patents issued to a firm in a given year divided by lagged total assets (columns (1), (2), (5), and (6)) and *Citation Count*, or the count of citations accruing to a firm's issued patents in a given year divided by total assets (columns (3), (4), (7), and (8)). To compute *Expected Zombification*, we separately run twelve-year rolling-window regressions of a zombie indicator on either the first (odd-numbered columns) or the first two (even-numbered) principal components extracted from our uncertainty proxies, controls, and firm fixed effects per industry. While the zombification variables in Panel A choose as zombies those firms with an Altman Z-score below zero and an interest coverage below one (*Standard Zombie*), those in Panel B additionally require that zombies receive subsidized credit (*Subsidized Zombie*). The controls include an indicator variable equal to one if one-year-lagged firm value is below \$50 million and else zero (*Small Firm*), an indicator variable equal to one if the firm's one-year-lagged age is below ten years and else zero (*Young Firm*), and one-year-lagged GDP growth (*GDP Growth*). We use the 50 Hoberg and Phillips (2016) industry classification to define our industries. We next combine the slope estimates of the principal component(s) with their end-of-window values to calculate *Expected Zombification*. Our controls are a firm's one-year lagged assets (*Size*), its one-year lagged sum of EBIT, depreciation, and R&D expenses scaled by two-year lagged assets (*Cash Flow*), its compounded stock return over the subsequent 36 months (*Stock Return*), its one-year-lagged Tobin's Q (*Tobin's Q*), and macro variables consisting of *State GDP Growth*, *State Labor Force*, and *Regional Inflation* (coefficients omitted for brevity). Plain numbers are coefficient estimates, whereas those in square brackets are *t*-statistics computed from standard errors clustered at the firm level. ***, **, and * indicate statistical significance at the 99%, 95%, and 90% confidence level, respectively.

Zombification Proxy Based On:

	Z-Score and Interest Coverage (Standard Zombie)				Z-Score, Interest Coverage, and Subsidized Credit (Credit-Subsidized Zombie)			
	Innovation Proxy		Citation Count		Innovation Proxy		Citation Count	
	Patent Count		Citation Count		Patent Count		Citation Count	
# Principle Components	# Principle Components		# Principle Components		# Principle Components		# Principle Components	
One	Two	One	Two	One	Two	One	Two	
(1)	(2)	(3)	(4)	(5)	(6)	(7)	(8)	
<i>Expected Zombification</i>	0.009** [2.61]	0.006 [1.58]	0.201*** [3.70]	0.234*** [3.37]	0.014* [1.81]	0.024** [2.39]	0.369** [2.37]	0.640*** [3.37]
<i>Size</i>	-0.005*** [-9.36]	-0.005*** [-9.45]	-0.079*** [-8.87]	-0.080*** [-8.98]	-0.005*** [-9.41]	-0.005*** [-9.42]	-0.074*** [-8.53]	-0.074*** [-8.55]
<i>Cash Flow</i>	-0.005** [-2.18]	-0.005** [-2.13]	-0.105*** [-2.71]	-0.103** [-2.66]	-0.007*** [-3.17]	-0.007*** [-3.16]	-0.132*** [-3.74]	-0.131*** [-3.72]
<i>Stock Return</i>	0.000** [-2.43]	0.000** [-2.40]	-0.003 [-1.19]	-0.003 [-1.18]	-0.001*** [-2.89]	-0.001*** [-2.87]	-0.007** [-2.19]	-0.007** [-2.16]
<i>Tobin's Q</i>	0.000 [-0.50]	0.000 [-0.60]	0.008 [1.60]	0.008 [1.56]	0.000 [-1.05]	0.000 [-1.03]	0.000 [0.04]	0.000 [0.09]
Macro Controls	Yes	Yes	Yes	Yes	Yes	Yes	Yes	Yes
Firm FEs	Yes	Yes	Yes	Yes	Yes	Yes	Yes	Yes
R ²	0.04	0.04	0.05	0.05	0.04	0.04	0.05	0.05
Observations	25,998	25,998	25,998	25,998	23,168	23,168	23,168	23,168

Table 14. Real Effects of Zombie Firms on Non-Zombie Firms' Investment and Disinvestment: Shipping Firms Sample

In this table, we report the results from panel regressions of public and private shipping firms' investment and disinvestment on expected zombification (*Expected Zombification^S*), controls, and firm fixed effects. We use a firm's total, new, and mature ship purchases over a year scaled by its total vessels at the start of that year to measure investment in columns (1) to (3), respectively. Conversely, we use a firm's total ship retirements, sales, and demolitions over a year scaled by its total vessels at the start of that year to measure disinvestment in columns (4) to (6), respectively. To compute *Expected Zombification^S*, we separately run full-sample regressions of a zombie indicator on the three-month-lagged value-weighted average implied volatility taken over all firms in a subsector and controls per subsector. We choose as zombies those firms with an interest coverage below one. The control variables include an indicator variable equal to one if one-year-lagged firm value is below \$50 million and else zero (*Small Firm*), an indicator variable equal to one if the firm's one-year-lagged age is below ten years and else zero (*Young Firm*), and the three, six, nine, and twelve-month lagged quarterly returns of forward contracts written on subsector-specific freight rates (*Forward Return*). We next combine the slope estimate of the average implied volatility variable with its end-of-window value. Our controls are a firm's one-year lagged assets (*Size*), its one-year lagged sum of EBIT and depreciation scaled by two-year lagged assets (*Cash Flow^S*), and the three, six, nine, and twelve-month lagged quarterly returns of forward contracts written on subsector-specific freight rates (*Forward Return*). Plain numbers are coefficient estimates, whereas those in square brackets are *t*-statistics computed from standard errors clustered at the firm level. ***, **, and * indicate statistical significance at the 99%, 95%, and 90% confidence level, respectively.

	Investment Proxy			Disinvestment Proxy		
	All Ships	New Ships	Used Ships	All Ships	Sold Ships	Demolished Ships
	(1)	(2)	(3)	(4)	(5)	(6)
<i>Expected Zombification^S</i>	-0.160** [-2.07]	-0.141* [-1.87]	-0.013 [-1.24]	-0.076** [-2.59]	-0.037 [-1.68]	-0.032* [-1.88]
<i>Size</i>	-0.032 [-1.48]	-0.037* [-1.77]	0.005* [1.70]	0.019*** [2.79]	0.021*** [3.65]	-0.003 [-1.10]
<i>Cash Flow^S</i>	0.141 [1.39]	0.154 [1.57]	-0.018 [-1.34]	0.046 [0.76]	0.017 [0.48]	0.006 [0.19]
<i>Forward Return</i>	0.059* [1.94]	0.063** [2.11]	-0.005 [-1.63]	-0.042** [-2.13]	-0.010 [-0.93]	-0.026** [-2.13]
Firm FEs	Yes	Yes	Yes	Yes	Yes	Yes
R ²	0.04	0.04	0.04	0.03	0.03	0.02
Observations	1,054	1,054	1,054	1,054	1,054	1,054

Internet Appendices

Appendix A Mathematical Proofs

A.1 Creditor's Continuation Value

In this appendix, we derive the creditor's continuation value if they agree to keep the levered firms alive. The present value of all future cash flows to the creditors is:

$$\mathcal{C}(\theta, X) = \mathbb{E}^{\mathbb{Q}} \left[\int_0^{\infty} \min\{\max\{\Pi_t, b\}, c^*\} e^{-rt} dt \right] \quad (\text{A.1})$$

$$= \mathbb{E}^{\mathbb{Q}} \left[\int_0^{\infty} (c^* - \max\{c^* - \Pi_t, 0\}) e^{-rt} dt - \int_0^{\infty} (b - \max\{b - \Pi_t, 0\}) e^{-rt} dt \right] + \frac{b}{r} \quad (\text{A.2})$$

$$= \mathfrak{C}(\theta, X; c^*) - \mathfrak{C}(\theta, X; b) + \frac{b}{r}, \quad (\text{A.3})$$

where we introduce, for some $a > 0$, the auxiliary function:

$$\mathfrak{C}(\theta, X; a) = \mathbb{E}^{\mathbb{Q}} \left[\int_0^{\infty} \min\{\Pi_t, a\} e^{-rt} dt \right] = \mathbb{E}^{\mathbb{Q}} \left[\int_0^{\infty} (a - \max\{a - \Pi_t, 0\}) e^{-rt} dt \right]. \quad (\text{A.4})$$

Proposition 4. Let $a > 0$ be a constant. Define $A = \frac{\gamma + \frac{1}{2}\kappa}{((n_U + n_L + 1)\gamma + \kappa)^2}$ and $\theta_q = \sqrt{\frac{a}{A}}$. Then:

$$\mathfrak{C}(\theta, X; a) = \mathbb{E}^{\mathbb{Q}} \left[\int_0^{\infty} (a - \max\{a - \Pi_t, 0\}) e^{-rt} dt \right] \quad (\text{A.5})$$

$$= \begin{cases} c_{1,X} \theta^{\beta_1} + c_{2,X} \theta^{\beta_2} + c_{0,X} \theta^2 & \text{if } \theta \leq \theta_q, \\ c_{3,X} \theta^{\beta_3} + c_{4,X} \theta^{\beta_4} + \frac{a}{r} & \text{if } \theta \geq \theta_q. \end{cases} \quad (\text{A.6})$$

Proof. When profits are low (and θ near Z), the unlevered firms and the levered firms both produce optimally $Q^* := \frac{\theta}{(n_U + n_L + 1)\gamma + \kappa}$ per unit of time. The levered firms' net profit per unit of time is:

$$\Pi = (\theta - (n_U + n_L)\gamma Q^*)Q^* - \frac{1}{2}\kappa(Q^*)^2 = A\theta^2, \quad (\text{A.7})$$

where $A = \frac{\gamma + \frac{1}{2}\kappa}{((n_U + n_L + 1)\gamma + \kappa)^2} > 0$.

To calculate the continuation value, we need to compare the operating profits, Π , with the constant a . Comparing the profit to a yields $A\theta^2 - a = 0 \Leftrightarrow \theta = \sqrt{\frac{a}{A}} =: \theta_q$. Thus,

$$\max\{a - \Pi, 0\} = \begin{cases} a - A\theta^2 & \text{if } \theta \in (0, \theta_q], \\ 0 & \text{if } \theta \in [\theta_q, \infty). \end{cases} \quad (\text{A.8})$$

In each of the two volatility states, the creditor's continuation value at time τ_Z from Equation (A.2), $\mathcal{C} = \mathcal{C}(\theta, X)$, needs to satisfy the usual risk-neutral valuation condition

$$\mathbb{E}^{\mathbb{Q}}[d\mathcal{C}] + (a - \max\{a - \Pi, 0\}) dt = r\mathcal{C} dt. \quad (\text{A.9})$$

This condition imposes that in a risk-neutral world expected capital gains and instantaneous cash flows add up to the return on a risk-free investment. In the real world, demand grows at rate α_X while attracting a risk premium μ , which is the return of a portfolio that perfectly replicates the randomness of demand. Let $\delta_X = \mu - \alpha_X$ denote the expected-return shortfall such that the real-world demand drift $\mu - \delta_X$ changes to $r - \delta_X$ in a risk-neutral world. With this in mind, Itô's Lemma translates the no-arbitrage pricing condition in Equation (A.9) into a system of coupled ordinary differential equations (ODEs),

$$\begin{aligned} (r - \delta_H)\theta \mathcal{C}_\theta^H + \frac{1}{2}\sigma_H^2\theta^2\mathcal{C}_{\theta\theta}^H - r\mathcal{C}^H + p_L(\mathcal{C}^L - \mathcal{C}^H) + a - \max\{a - \Pi, 0\} &= 0, \\ (r - \delta_L)\theta \mathcal{C}_\theta^L + \frac{1}{2}\sigma_L^2\theta^2\mathcal{C}_{\theta\theta}^L - r\mathcal{C}^L + p_H(\mathcal{C}^H - \mathcal{C}^L) + a - \max\{a - \Pi, 0\} &= 0, \end{aligned} \quad (\text{A.10})$$

where subscripts denote partial derivatives and superscripts economic regimes. The first three terms are alike the usual diffusion terms (see, e.g., Dixit and Pindyck (1994)). The following summands correct for the possibility of jumping to the different regime. The final two summands add the current cash flows as an inhomogeneity. The ODE system has to be solved subject to the boundary conditions $\lim_{\theta \rightarrow 0} \mathcal{C}(\theta, X) = 0$ and $\lim_{\theta \rightarrow \infty} \mathcal{C}(\theta, X) = \frac{a}{r}$.

Guessing the homogeneous solution to be of the familiar type $\mathcal{C}^H = a^H \theta^\beta$ and $\mathcal{C}^L = a^L \theta^\beta$ leads us to define the characteristic polynomials

$$Q_H(\beta) = (r - \delta_H)\beta + \frac{1}{2}\sigma_H^2\beta(\beta - 1) - r - p_L, \quad (\text{A.11})$$

$$Q_L(\beta) = (r - \delta_L)\beta + \frac{1}{2}\sigma_L^2\beta(\beta - 1) - r - p_H. \quad (\text{A.12})$$

To solve both ODEs simultaneously, we study the degree four polynomial equation

$$Q_H(\beta)Q_L(\beta) = p_H p_L, \quad (\text{A.13})$$

whose positive solutions we denote by β_1 and β_2 and its negative solutions by β_3 and β_4 . The general solution to the homogeneous ODE system in Equation (A.10) is hence given by

$$\mathcal{C}(\theta, X) = c_{1,X}\theta^{\beta_1} + c_{2,X}\theta^{\beta_2} + c_{3,X}\theta^{\beta_3} + c_{4,X}\theta^{\beta_4}. \quad (\text{A.14})$$

Plugging this solution into that homogeneous ODE system reveals that the coefficients have to satisfy the following conditions

$$c_{1,L} = -\frac{c_{1,H}}{p_L} Q_H(\beta_1), \quad (\text{A.15})$$

$$c_{2,L} = -\frac{c_{2,H}}{p_L} Q_H(\beta_2), \quad (\text{A.16})$$

$$c_{3,L} = -\frac{c_{3,H}}{p_L} Q_H(\beta_3), \quad (\text{A.17})$$

$$c_{4,L} = -\frac{c_{4,H}}{p_L} Q_H(\beta_4). \quad (\text{A.18})$$

The instantaneous profits from Equation (A.8) add particular solutions to this homogeneous solution, while imposing the boundary conditions remove some solution components. Thus, the creditor's continuation value is

$$\mathcal{C}(\theta, X) = \begin{cases} c_{1,X} \theta^{\beta_1} + c_{2,X} \theta^{\beta_2} + c_{0,X} \theta^2 & \text{if } \theta \leq \theta_q, \\ c_{3,X} \theta^{\beta_3} + c_{4,X} \theta^{\beta_4} + \frac{a}{r} & \text{if } \theta \geq \theta_q, \end{cases} \quad (\text{A.19})$$

where $c_{0,X} = \frac{A}{\rho_X}$ with $\rho_H = \frac{Q_H(2)Q_L(2)-p_H p_L}{p_L - Q_L(2)}$ and $\rho_L = \frac{Q_H(2)Q_L(2)-p_H p_L}{p_H - Q_H(2)}$.

The coefficients $c_{i,X}$ are identified by the following by value-matching and smooth-pasting conditions at $\theta = \theta_q$:

$$c_{1,H}(\theta_q)^{\beta_1} + c_{2,H}(\theta_q)^{\beta_2} + c_{0,H}(\theta_q)^2 = c_{3,H}(\theta_q)^{\beta_3} + c_{4,H}(\theta_q)^{\beta_4} + \frac{a}{r}, \quad (\text{A.20})$$

$$c_{1,H} \beta_1 (\theta_q)^{\beta_1} + c_{2,H} \beta_2 (\theta_q)^{\beta_2} + 2c_{0,H}(\theta_q)^2 = c_{3,H} \beta_3 (\theta_q)^{\beta_3} + c_{4,H} \beta_4 (\theta_q)^{\beta_4}, \quad (\text{A.21})$$

$$c_{1,L}(\theta_q)^{\beta_1} + c_{2,L}(\theta_q)^{\beta_2} + c_{0,L}(\theta_q)^2 = c_{3,L}(\theta_q)^{\beta_3} + c_{4,L}(\theta_q)^{\beta_4} + \frac{a}{r}, \quad (\text{A.22})$$

$$c_{1,L} \beta_1 (\theta_q)^{\beta_1} + c_{2,L} \beta_2 (\theta_q)^{\beta_2} + 2c_{0,L}(\theta_q)^2 = c_{3,L} \beta_3 (\theta_q)^{\beta_3} + c_{4,L} \beta_4 (\theta_q)^{\beta_4}. \quad (\text{A.23})$$

We state the solution to the ODE system (A.10) subject to Equations (A.20) to (A.18) recursively, calculating $c_{4,H}$ in closed-form and deriving all other coefficients from that solution. For ease of notation, we write $Q_H(\beta_i) = H_i$ for $i \in \{1, 2, 3, 4\}$. The first solution is given by

$$c_{4,H} = -c_{0,H} \frac{\left(\frac{\beta_3 - \beta_1}{\beta_2 - \beta_1} - \frac{H_3 \beta_3 - H_1 \beta_1}{H_2 \beta_2 - H_1 \beta_1} \right) \frac{2 - \beta_1 + \frac{p_L \rho_H + \rho_L H_1}{(H_2 - H_1) \rho_L}}{\frac{\beta_3 - \beta_1}{\beta_2 - \beta_1} - \frac{H_3 - H_1}{H_2 - H_1}} - \frac{2 - \beta_1}{\beta_2 - \beta_1} - \frac{2 p_L \rho_H + H_1 \beta_1 \rho_L}{(H_2 \beta_2 - H_1 \beta_1) \rho_L}}{\frac{\beta_4 - \beta_1}{\beta_2 - \beta_1} - \frac{H_4 \beta_4 - H_1 \beta_1}{H_2 \beta_2 - H_1 \beta_1} - \left(\frac{\beta_3 - \beta_1}{\beta_2 - \beta_1} - \frac{H_3 \beta_3 - H_1 \beta_1}{H_2 \beta_2 - H_1 \beta_1} \right) \frac{\frac{\beta_4 - \beta_1}{\beta_2 - \beta_1} - \frac{H_4 - H_1}{H_2 - H_1}}{\frac{\beta_3 - \beta_1}{\beta_2 - \beta_1} - \frac{H_3 - H_1}{H_2 - H_1}}} (\theta_q)^{2 - \beta_4} \quad (\text{A.24})$$

$$+ \frac{\left(\frac{\beta_3 - \beta_1}{\beta_2 - \beta_1} - \frac{H_3 \beta_3 - H_1 \beta_1}{H_2 \beta_2 - H_1 \beta_1} \right) \frac{H_1 + p_L}{H_2 - H_1} - \frac{\beta_1}{\beta_2 - \beta_1} - \frac{H_1 \beta_1}{H_2 \beta_2 - H_1 \beta_1} + \frac{\beta_1}{\beta_2 - \beta_1}}{\frac{\beta_4 - \beta_1}{\beta_2 - \beta_1} - \frac{H_4 \beta_4 - H_1 \beta_1}{H_2 \beta_2 - H_1 \beta_1} - \left(\frac{\beta_3 - \beta_1}{\beta_2 - \beta_1} - \frac{H_3 \beta_3 - H_1 \beta_1}{H_2 \beta_2 - H_1 \beta_1} \right) \frac{\frac{\beta_4 - \beta_1}{\beta_2 - \beta_1} - \frac{H_4 - H_1}{H_2 - H_1}}{\frac{\beta_3 - \beta_1}{\beta_2 - \beta_1} - \frac{H_3 - H_1}{H_2 - H_1}}} \frac{a}{r} (\theta_q)^{-\beta_4}.$$

Given $c_{4,H}$, we can easily calculate $c_{3,H}$ as follows

$$c_{3,H} = -c_{4,H} \frac{\frac{\beta_4 - \beta_1}{\beta_2 - \beta_1} - \frac{H_4 - H_1}{H_2 - H_1}}{\frac{\beta_3 - \beta_1}{\beta_2 - \beta_1} - \frac{H_3 - H_1}{H_2 - H_1}} (\theta_q)^{\beta_4 - \beta_3} + c_{0,H} \frac{\frac{2 - \beta_1}{\beta_2 - \beta_1} + \frac{p_L \rho_H + \rho_L H_1}{(H_2 - H_1) \rho_L}}{\frac{\beta_3 - \beta_1}{\beta_2 - \beta_1} - \frac{H_3 - H_1}{H_2 - H_1}} (\theta_q)^{2 - \beta_3} - \frac{\frac{H_1 + p_L}{H_2 - H_1} - \frac{\beta_1}{\beta_2 - \beta_1}}{\frac{\beta_3 - \beta_1}{\beta_2 - \beta_1} - \frac{H_3 - H_1}{H_2 - H_1}} \frac{a}{r} (\theta_q)^{-\beta_3}. \quad (\text{A.25})$$

Given $c_{4,H}$ and $c_{3,H}$, we can easily calculate $c_{2,H}$ as follows

$$c_{2,H} = c_{3,H} \frac{\beta_3 - \beta_1}{\beta_2 - \beta_1} (\theta_q)^{\beta_3 - \beta_2} + c_{4,H} \frac{\beta_4 - \beta_1}{\beta_2 - \beta_1} (\theta_q)^{\beta_4 - \beta_2} - \frac{2 - \beta_1}{\beta_2 - \beta_1} c_{0,H} (\theta_q)^{2 - \beta_2} - \frac{\beta_1}{\beta_2 - \beta_1} \frac{a}{r} (\theta_q)^{-\beta_2}. \quad (\text{A.26})$$

Given $c_{4,H}$, $c_{3,H}$ and $c_{2,H}$, we can easily calculate $c_{1,H}$ as follows

$$c_{1,H} = -c_{2,H} (\theta_q)^{\beta_2 - \beta_1} + c_{3,H} (\theta_q)^{\beta_3 - \beta_1} + c_{4,H} (\theta_q)^{\beta_4 - \beta_1} - c_{0,H} (\theta_q)^{2 - \beta_1} + \frac{a}{r} (\theta_q)^{-\beta_1}. \quad (\text{A.27})$$

Finally, given the above, $c_{1,L}$, $c_{2,L}$, $c_{3,L}$, and $c_{4,L}$ are available through Equations (A.15) to (A.18). \square

A.2 Incremental Production Option If Levered Firms Never Leave the Industry

We next turn to the pricing of the unlevered firm's K^{th} incremental production option which reflects the value of producing and selling the K^{th} marginal output unit. Given a production threshold θ^P , the option value, $\Delta \mathcal{V} = \Delta \mathcal{V}(\theta, X; \theta^P)$, satisfies the no-arbitrage pricing condition

$$\mathbb{E}^{\mathbb{Q}}[d\Delta \mathcal{V}] + \max\{\theta - \theta^P, 0\} dt = r \Delta \mathcal{V} dt. \quad (\text{A.28})$$

Itô's Lemma translates this condition into a system of ODEs,

$$\begin{aligned} (r - \delta_H) \theta \Delta \mathcal{V}_{\theta}^H + \frac{1}{2} \sigma_H^2 \theta^2 \Delta \mathcal{V}_{\theta\theta}^H - r \Delta \mathcal{V}^H + p_L (\Delta \mathcal{V}^L - \Delta \mathcal{V}^H) + \max\{\theta - \theta^P, 0\} &= 0, \\ (r - \delta_L) \theta \Delta \mathcal{V}_{\theta}^L + \frac{1}{2} \sigma_L^2 \theta^2 \Delta \mathcal{V}_{\theta\theta}^L - r \Delta \mathcal{V}^L + p_H (\Delta \mathcal{V}^H - \Delta \mathcal{V}^L) + \max\{\theta - \theta^P, 0\} &= 0. \end{aligned} \quad (\text{A.29})$$

Using the general solution from Equation (A.14), adding the inhomogeneities, and taking the usual boundary conditions, $\lim_{\theta \rightarrow 0} \Delta \mathcal{V}(\theta, X; K) = 0$ and $\lim_{\theta \rightarrow \infty} \Delta \mathcal{V}(\theta, X; K) = b_{0,X} \theta - \frac{\theta^P}{r}$, into account, the value of the K^{th} incremental production asset is

$$\Delta \mathcal{V}(\theta, X; K) = \begin{cases} b_{1,X} \theta^{\beta_1} + b_{2,X} \theta^{\beta_2} & \text{if } \theta \leq \theta^P, \\ b_{3,X} \theta^{\beta_3} + b_{4,X} \theta^{\beta_4} + b_{0,X} \theta - \frac{\theta^P}{r} & \text{if } \theta \geq \theta^P, \end{cases} \quad (\text{A.30})$$

where $b_{0,H} = \frac{\delta_L + p_H + p_L}{\delta_L \delta_H + \delta_L p_L + \delta_H p_H}$ and $b_{0,L} = \frac{\delta_H + p_H + p_L}{\delta_L \delta_H + \delta_L p_L + \delta_H p_H}$.

Akin to Equations (A.15) to (A.18), the coefficients need to satisfy the following conditions:

$$b_{1,L} = -\frac{b_{1,H}}{p_L} Q_H(\beta_1), \quad (\text{A.31})$$

$$b_{2,L} = -\frac{b_{2,H}}{p_L} Q_H(\beta_2), \quad (\text{A.32})$$

$$b_{3,L} = -\frac{b_{3,H}}{p_L} Q_H(\beta_3), \quad (\text{A.33})$$

$$b_{4,L} = -\frac{b_{4,H}}{p_L} Q_H(\beta_4). \quad (\text{A.34})$$

Finally, the coefficients are uniquely identified by additionally imposing the following value-matching and smooth-pasting conditions at $\theta = \theta^P$:

$$b_{1,H}(\theta^P)^{\beta_1} + b_{2,H}(\theta^P)^{\beta_2} = b_{3,H}(\theta^P)^{\beta_3} + b_{4,H}(\theta^P)^{\beta_4} + b_{0,H}\theta^P - \frac{\theta^P}{r}, \quad (\text{A.35})$$

$$b_{1,H}\beta_1(\theta^P)^{\beta_1} + b_{2,H}\beta_2(\theta^P)^{\beta_2} = b_{3,H}\beta_3(\theta^P)^{\beta_3} + b_{4,H}\beta_4(\theta^P)^{\beta_4} + b_{0,H}\theta^P, \quad (\text{A.36})$$

$$b_{1,L}(\theta^P)^{\beta_1} + b_{2,L}(\theta^P)^{\beta_2} = b_{3,L}(\theta^P)^{\beta_3} + b_{4,L}(\theta^P)^{\beta_4} + b_{0,L}\theta^P - \frac{\theta^P}{r}, \quad (\text{A.37})$$

$$b_{1,L}\beta_1(\theta^P)^{\beta_1} + b_{2,L}\beta_2(\theta^P)^{\beta_2} = b_{3,L}\beta_3(\theta^P)^{\beta_3} + b_{4,L}\beta_4(\theta^P)^{\beta_4} + b_{0,L}\theta^P. \quad (\text{A.38})$$

We next state the coefficients that solve the above conditions. We do so recursively, calculating $b_{4,H}$ in closed-form and deriving all other coefficients from that solution. For ease of notation, we write $Q_H(\beta_i) = H_i$ for $i \in \{1, 2, 3, 4\}$. The first solution is given by

$$b_{4,H} = \frac{(H_2\beta_2 - H_1\beta_1)b_{0,H}\frac{\beta_1-1}{\beta_2-\beta_1} - (H_1\beta_1 b_{0,H} + p_L b_{0,L}) + \frac{H_1 b_{0,H} + p_L b_{0,L} - (H_2 - H_1)b_{0,H}\frac{\beta_1-1}{\beta_2-\beta_1}}{H_1 - H_3 - (H_2 - H_1)\frac{\beta_1-\beta_3}{\beta_2-\beta_1}} (H_1\beta_1 - H_3\beta_3 - (H_2\beta_2 - H_1\beta_1)\frac{\beta_1-\beta_3}{\beta_2-\beta_1})}{H_1\beta_1 - H_4\beta_4 - (H_2\beta_2 - H_1\beta_1)\frac{\beta_1-\beta_4}{\beta_2-\beta_1} - \frac{H_1 - H_4 - (H_2 - H_1)\frac{\beta_1-\beta_4}{\beta_2-\beta_1}}{H_1 - H_3 - (H_2 - H_1)\frac{\beta_1-\beta_3}{\beta_2-\beta_1}} (H_1\beta_1 - H_3\beta_3 - (H_2\beta_2 - H_1\beta_1)\frac{\beta_1-\beta_3}{\beta_2-\beta_1})} (\theta^P)^{1-\beta_4}$$

$$= \frac{(H_2\beta_2 - H_1\beta_1)\frac{\beta_1}{\beta_2-\beta_1} - H_1\beta_1 + \frac{H_1 + p_L - (H_2 - H_1)\frac{\beta_1}{\beta_2-\beta_1}}{H_1 - H_3 - (H_2 - H_1)\frac{\beta_1-\beta_3}{\beta_2-\beta_1}} (H_1\beta_1 - H_3\beta_3 - (H_2\beta_2 - H_1\beta_1)\frac{\beta_1-\beta_3}{\beta_2-\beta_1})}{H_1\beta_1 - H_4\beta_4 - (H_2\beta_2 - H_1\beta_1)\frac{\beta_1-\beta_4}{\beta_2-\beta_1} - \frac{H_1 - H_4 - (H_2 - H_1)\frac{\beta_1-\beta_4}{\beta_2-\beta_1}}{H_1 - H_3 - (H_2 - H_1)\frac{\beta_1-\beta_3}{\beta_2-\beta_1}} (H_1\beta_1 - H_3\beta_3 - (H_2\beta_2 - H_1\beta_1)\frac{\beta_1-\beta_3}{\beta_2-\beta_1})} (\theta^P)^{1-\beta_4} r. \quad (\text{A.39})$$

Given $b_{4,H}$, we can easily calculate $b_{3,H}$ as follows

$$b_{3,H} = -b_{4,H} \frac{H_1 - H_4 - (H_2 - H_1)\frac{\beta_1-\beta_4}{\beta_2-\beta_1}}{H_1 - H_3 - (H_2 - H_1)\frac{\beta_1-\beta_3}{\beta_2-\beta_1}} (\theta^P)^{\beta_4-\beta_3} - \frac{H_1 b_{0,H} + p_L b_{0,L} - (H_2 - H_1)b_{0,H}\frac{\beta_1-1}{\beta_2-\beta_1}}{H_1 - H_3 - (H_2 - H_1)\frac{\beta_1-\beta_3}{\beta_2-\beta_1}} (\theta^P)^{1-\beta_3}$$

$$+ \frac{H_1 + p_L - (H_2 - H_1)\frac{\beta_1}{\beta_2-\beta_1}}{H_1 - H_3 - (H_2 - H_1)\frac{\beta_1-\beta_3}{\beta_2-\beta_1}} (\theta^P)^{1-\beta_3} r. \quad (\text{A.40})$$

Given $b_{4,H}$ and $b_{3,H}$, we can easily calculate $b_{2,H}$ as follows

$$b_{2,H} = -b_{3,H} \frac{\beta_1 - \beta_3}{\beta_2 - \beta_1} (\theta^P)^{\beta_3 - \beta_2} - b_{4,H} \frac{\beta_1 - \beta_4}{\beta_2 - \beta_1} (\theta^P)^{\beta_4 - \beta_2} - b_{0,H} \frac{\beta_1 - 1}{\beta_2 - \beta_1} (\theta^P)^{1 - \beta_2} + \frac{\beta_1}{\beta_2 - \beta_1} \frac{(\theta^P)^{1 - \beta_2}}{r}. \quad (\text{A.41})$$

Given $b_{4,H}$, $b_{3,H}$, and $b_{2,H}$, we can easily calculate $b_{1,H}$ as follows

$$b_{1,H} = -b_{2,H} (\theta^P)^{\beta_2 - \beta_1} + b_{3,H} (\theta^P)^{\beta_3 - \beta_1} + b_{4,H} (\theta^P)^{\beta_4 - \beta_1} + b_{0,H} (\theta^P)^{1 - \beta_1} - \frac{(\theta^P)^{1 - \beta_1}}{r}. \quad (\text{A.42})$$

Finally, given the above, $b_{1,L}$, $b_{2,L}$, $b_{3,L}$, and $b_{4,L}$ are available through Equations (A.31) to (A.34).

A.3 Leaving The Economy

A levered firm stays as a zombie in the economy if its continuation value during default exceeds its residual value, $\mathcal{C}(Z, X) \geq L_X$. Suppose that each of the n_L levered firms draws its own idiosyncratic recovery value according to $\ln(L_X) \sim N(\mu_{L,X}, \sigma_{L,X}^2)$. Then, only a fraction of the defaulting levered firms continues as zombies. Given the state X , the continuation value $\mathcal{C}(Z, X)$ is a constant. In state X , we thus only expect $\mathbb{Q}[\mathcal{C}(Z, X) \leq L_X | X] n_L$ firms to leave the economy. We can calculate that probability as follows:

$$\mathbb{Q}[\mathcal{C}(Z, X) \leq L_X | X] = \Phi \left(-\frac{\ln(\mathcal{C}(Z, X)) - \mu_{L,X}}{\sigma_{L,X}} \right), \quad (\text{A.43})$$

where Φ is the cumulative distribution function of a standard normal distribution.

For convenience, we set $\psi(X) = \mathbb{Q}[\mathcal{C}(Z, X) \geq L_X | X] = \Phi \left(\frac{\ln(\mathcal{C}(Z, X)) - \mu_{L,X}}{\sigma_{L,X}} \right)$ to be the share of levered firms staying as a zombie upon default in state X .

A.4 Discount Factor for Levered Firms' Exit

In this section, we value the correction term which adds to the value of the unlevered firms' production option and captures the increase in market power once some levered firms leave the industry.

Applying the law of total expectation yields

$$\Delta V(\theta, X; K) = \Delta \mathcal{V}(\theta, X; \theta_Z^P) + (\Delta \mathcal{V}(Z, X; \theta^P) - \Delta \mathcal{V}(Z, X; \theta_Z^P)) \mathbb{E}^\mathbb{Q}[e^{-r\tau} | X], \quad (\text{A.44})$$

where τ denotes the hitting time $\tau = \min\{t > 0 : \Pi_t = c\} = \min\{t > 0 : \theta_t = Z\}$.

In the absence of arbitrage, the "expected discount factor" $Q(\theta, X; Z) = \mathbb{E}^\mathbb{Q}[e^{-r\tau} | X]$ needs to satisfy the risk-neutral pricing rule

$$\mathbb{E}^\mathbb{Q}[dQ] = rQ dt. \quad (\text{A.45})$$

Itô's Lemma translates this valuation condition into a system of coupled ODEs,

$$\begin{aligned}(r - \delta_H)\theta Q_\theta^H + \frac{1}{2}\sigma_H^2\theta^2 Q_{\theta\theta}^H - rQ^H + p_L(Q^L - Q^H) &= 0, \\ (r - \delta_L)\theta Q_\theta^L + \frac{1}{2}\sigma_L^2\theta^2 Q_{\theta\theta}^L - rQ^L + p_H(Q^H - Q^L) &= 0.\end{aligned}\tag{A.46}$$

Suppose the default has not occurred yet ($\theta > Z$). Taking the upper limit $\lim_{\theta \rightarrow \infty} Q(\theta, X; Z) = 0$ into account, the general solution is

$$Q(\theta, X; Z) = q_{3,X}\theta^{\beta_3} + q_{4,X}\theta^{\beta_4},\tag{A.47}$$

where the coefficients need to satisfy

$$q_{3,L} = -\frac{q_{3,H}}{p_L}Q_H(\beta_3),\tag{A.48}$$

$$q_{4,L} = -\frac{q_{4,H}}{p_L}Q_H(\beta_4).\tag{A.49}$$

At the default point, $\theta = Z$, the coefficients satisfy the value-matching conditions

$$q_{3,H}Z^{\beta_3} + q_{4,H}Z^{\beta_4} = 1,\tag{A.50}$$

$$q_{3,L}Z^{\beta_3} + q_{4,L}Z^{\beta_4} = 1.\tag{A.51}$$

The solution to the equation system is given by:

$$q_{3,H} = \frac{p_L + Q_H(\beta_4)}{Q_H(\beta_4) - Q_H(\beta_3)}Z^{-\beta_3},\tag{A.52}$$

$$q_{4,H} = \frac{p_L + Q_H(\beta_3)}{Q_H(\beta_3) - Q_H(\beta_4)}Z^{-\beta_4}.\tag{A.53}$$

A.5 Capacity Adjustment Options

In this section, we determine the value of the unlevered firms' scale-adjustment options. Disinvestment and investment options can be interpreted as coupled compounded options written on an underlying incremental option to produce.

The value of the growth option, $\Delta F = \Delta F(\theta, X; K)$, satisfies the usual no-arbitrage pricing rule which translates into the following system of ODEs

$$(r - \delta_H)\theta \Delta F_\theta^H + \frac{1}{2}\sigma_H^2\theta^2 \Delta F_{\theta\theta}^H - r\Delta F^H + p_L(\Delta F^L - \Delta F^H) = 0,\tag{A.54}$$

$$(r - \delta_L)\theta \Delta F_\theta^L + \frac{1}{2}\sigma_L^2\theta^2 \Delta F_{\theta\theta}^L - r\Delta F^L + p_H(\Delta F^H - \Delta F^L) = 0.\tag{A.55}$$

Incorporating the boundary condition $\lim_{\theta \rightarrow 0} \Delta F(\theta, X; K) = 0$, the value of the growth option is

$$\Delta F(\theta, X; K) = a_{1,X}\theta^{\beta_1} + a_{2,X}\theta^{\beta_2},\tag{A.56}$$

where the coefficients need to satisfy the additional conditions

$$a_{1,L} = -\frac{a_{1,H}}{p_L} Q_H(\beta_1), \quad (\text{A.57})$$

$$a_{2,L} = -\frac{a_{2,H}}{p_L} Q_H(\beta_2). \quad (\text{A.58})$$

In analogy to the above, the value of the contraction option, $\Delta D(\theta, X; K)$, is

$$\Delta D(\theta, X; K) = d_{3,X} \theta^{\beta_3} + d_{4,X} \theta^{\beta_4}. \quad (\text{A.59})$$

This solution incorporates the limit $\lim_{\theta \rightarrow \infty} \Delta D(\theta, X; K) = 0$ and requires the coefficients to satisfy

$$d_{3,L} = -\frac{d_{3,H}}{p_L} Q_H(\beta_3), \quad (\text{A.60})$$

$$d_{4,L} = -\frac{d_{4,H}}{p_L} Q_H(\beta_4). \quad (\text{A.61})$$

To uniquely identify the solution, we further impose the following value-matching and smooth-pasting conditions at the exercise boundaries, θ_X^* and θ_X' . The four value-matching conditions are

$$\Delta F(\theta_X^*, X; K) + I = \Delta V(\theta_X^*, X; K) + \Delta D(\theta_X^*, X; K), \quad (\text{A.62})$$

$$\Delta D(\theta_X', X; K) + \Delta V(\theta_X', X; K) = d + \Delta F(\theta_X', X; K). \quad (\text{A.63})$$

These conditions equate the cost (gain) and gain (cost) of investing (disinvesting) into the K^{th} marginal unit of capacity. The corresponding smooth-pasting conditions ensure optimality and are

$$\Delta F_\theta(\theta_X^*, X; K) = \Delta V_\theta(\theta_X^*, X; K) + \Delta D_\theta(\theta_X^*, X; K), \quad (\text{A.64})$$

$$\Delta D_\theta(\theta_X', X; K) + \Delta V_\theta(\theta_X', X; K) = \Delta F_\theta(\theta_X', X; K). \quad (\text{A.65})$$

Taken together, this equation system has to be solved numerically.

Appendix B Estimating Capacity Overhang

In this appendix, we offer more details about how we estimate capacity overhang using the stochastic frontier model methodology advocated in Aretz and Pope (2018). To do so, we can compactly write the stochastic frontier model estimated by these authors as:

$$\ln(K_{i,t}) = \alpha_k + \boldsymbol{\beta}' \mathbf{X}_{i,t} + v_{i,t} + u_{i,t}, \quad (\text{B.1})$$

where $\ln(K_{i,t})$ is firm i 's log installed capacity at time t , $\mathbf{X}_{i,t}$ is a vector of optimal capacity determinants, $v_{i,t} \sim N(0, \sigma_v^2)$ is the log optimal capacity residual, and $u_{i,t} \sim N^+(\boldsymbol{\gamma}' \mathbf{Z}_{i,t}, \sigma_u^2)$ is the log capacity overhang residual. In turn, $\mathbf{Z}_{i,t}$ is a vector of capacity overhang determinants, and $N(\cdot)$ and $N^+(\cdot)$ denote the cumulative normal distribution and the cumulative normal

distribution truncated from below at zero, respectively. Finally, β and γ are both parameter vectors, σ_v^2 and σ_u^2 are parameters, and α_k is an industry fixed effect.

We use maximum likelihood methods to estimate the parameters of stochastic frontier model (B.1) on a recursive basis (see Kumbhakar and Lovell (2000)). The first estimation window stretches from July 1963 to December 1980 (which is some time before the start of our sample period). We roll forward the end dates of the windows on an annual basis, so that the second window stretches from July 1963 to December 1981. Equipped with the estimates from the window ending in December of year $t - 1$, we next calculate $\mu_{i,t}^* = \frac{\epsilon_{i,t}\sigma_u^2 + \gamma'Z_{i,t}\sigma_v^2}{\sigma_u^2 + \sigma_v^2}$ and $\sigma_{i,t}^* = \sigma_u\sigma_v / \sqrt{\sigma_u^2 + \sigma_v^2}$ for each firm i and each month in year t , where $\epsilon_{i,t} = u_{i,t} + v_{i,t}$. We finally calculate an estimate of the capacity overhang of firm i in month t from:

$$\hat{u}_{i,t} = E[u_{i,t} | \epsilon_{i,t}, \mathbf{Z}_{i,t}] = \mu_{i,t}^* + \sigma_{i,t}^* \left(\frac{n(-\mu_{i,t}^*/\sigma_{i,t}^*)}{N(-\mu_{i,t}^*/\sigma_{i,t}^*)} \right), \quad (\text{B.2})$$

where $n(\cdot)$ and $N(\cdot)$ are the standard normal density function and the cumulative standard normal distribution function evaluated at their input arguments, respectively.

In line with Aretz and Pope's (2018) main specification, we proxy for the log of installed capacity, $\ln(K_{i,t})$, using the log sum of gross property, plant, and equipment and long-term intangible assets. Conversely, we choose as optimal capacity determinants in $\mathbf{X}_{i,t}$ the log of sales over the prior four fiscal quarters; the log of costs of goods sold over that period; the log of selling, general, and administrative expenses over that period; the log of annualized volatility estimated from daily returns over the prior twelve months; the conditional market beta obtained from a regression of the daily excess stock return on the contemporaneous, the one-day lagged, and the sum of the two, three, and four day lagged excess market return over the prior twelve months, with the market beta estimate being the sum of the three slope coefficient estimates; and the log risk-free rate of return. As capacity overhang determinants in $\mathbf{Z}_{i,t}$, we choose the maximum of the sales decline over the prior four fiscal quarters and zero; the maximum of the sales decline from a stock's historical maximum sales to its sales four fiscal quarters ago and zero; and a dummy variable equal to one if net income is negative over the prior four fiscal quarters and else zero. We finally choose Kenneth French's 49 SIC code industry classification scheme to construct the industry fixed effects, α_k .

To improve the timeliness of the capacity overhang estimate, we follow Aretz and Pope (2018) in using quarterly accounting data whenever possible. To be specific, whenever quarterly data are available, we use the sum of gross property, plant, and equipment and long-term intangibles from the most recent prior fiscal quarter and the trailing sums of costs of goods sold and selling, general, and administrative expenses over the prior four most recent quarters. Whenever those data are not available, we use the sum of gross property, plant, and equipment and long-term intangibles, costs of goods sold, and selling, general, and administrative expenses from the prior most recent fiscal year. In line with standard conventions, we assume that quarterly data are reported with a two-month accounting gap, while annual data are reported with a three-month gap. We obtain the market data required to calculate capacity overhang from CRSP, the accounting data from Compustat, and the market return and risk-free rate of return data from Kenneth's French's website. We winsorize all variables used in stochastic frontier model (B.1) at the first and last percentiles per month.

Appendix C Variable Definitions and Additional Tests

Table C.1. Variable Definitions

In this table, we offer variable definitions. While Panel A focuses on our Dealscan variables, Panel B and C consider our Compustat variables used to measure expected zombification and those used in our main public firms panel regressions, respectively. Conversely, Panels D and E look into our Your-Economy Time-Series (YTS) public firms variables and our Clarkson-Orbis shipping-firm variables, respectively.

Variable	Definition
Panel A: Dealscan Regression Variables	
<i>Standard Zombie</i>	Indicator variable equal to one if a firm's Z-score is below zero and its interest coverage is below one and else zero.
<i>Subsidized Zombie</i>	Indicator variable equal to one if $Zombie = 1$ and the firm receives subsidized credit and else zero.
<i>Spread</i>	Natural log of the all-drawn-in loan spread over LIBOR.
<i>Covenants</i>	The number of covenants included in a loan package.
<i>Collateral</i>	Indicator variable equal to one if a loan is secured and else zero.
<i>Single Lender</i>	Indicator variable equal to one if the lender-commitment-share Herfindahl-Hirschman index is one (there is a single lender) and else zero.
<i>Maturity</i>	Natural log of the number of months until the loan's maturity date.
<i>Size</i>	Natural log of a firm's total assets.
<i>Age</i>	Number of years since the firm first appeared in Compustat.
<i>Profitability</i>	Ratio of a firm's operating income to total assets.
<i>Tangibility</i>	Ratio of a firm's net property, plant, and equipment to total assets.
<i>Market-to-Book</i>	Ratio of a firm's market equity value plus total assets minus book equity value to total assets.
<i>Leverage</i>	Ratio of the sum of a firm's short-term and long-term debt to total assets.
<i>Rated</i>	Indicator variable equal to one if a firm is rated and else zero.
<i>Loan Size</i>	Natural log of the outstanding loan amount.
<i>Loan Type</i>	Indicator variable equal to one for term loans and zero for revolvers.

Panel B: Compustat Variables Used to Predict Zombification

<i>VIX</i>	CBOE volatility index (VIX).
<i>EMV</i>	Newspaper-based stock market volatility tracker (see Baker et al. (2019)).
<i>EPU</i>	Economic policy uncertainty index (see Baker et al. (2016)).
<i>FIN</i>	Common financial uncertainty (see Jurado et al. (2015)).
<i>REAL</i>	Common real uncertainty (see Jurado et al. (2015)).
<i>MACRO</i>	Common macroeconomic uncertainty (see Jurado et al. (2015)).
<i>ARV</i>	Industry specific average realized stock return volatility (firm size-weighted).
<i>AIV</i>	Industry specific average implied stock return volatility (firm size-weighted).
<i>Small Firm</i>	Indicator variable equal to one if a firm's sales are below 50 million dollars and else zero.
<i>Young Firm</i>	Indicator variable equal to one if a firm is listed for less than ten years and else zero.
<i>GDP Growth</i>	Annual national GDP growth over the past year.
<i>Inflation</i>	National inflation rate.
<i>Labor Force</i>	Natural log of the national labor force.

Panel C: Compustat Panel Regression Variables

<i>Investment (CAPEX)</i>	Ratio of a firm's capital expenditures to one-year lagged assets.
<i>Investment (Comprehensive)</i>	Ratio of the sum of a firm's capital expenditures and M&A expenses to one-year lagged assets.
<i>Sale of PPE</i>	Ratio of a firm's sales of property, plant, and equipment to one-year lagged property, plant, and equipment.
<i>Expected Zombificationst (PC1)</i>	Zombification predicted through industry time-series regressions using the first principal component.
<i>Expected Zombificationst (PC2)</i>	Zombification predicted through industry time-series regressions using the first two principal components.
<i>Expected Zombification^{su} (PC1)</i>	Credit-subsidized zombification predicted through industry time-series regressions using the first principal component.
<i>Expected Zombification^{su} (PC2)</i>	Credit-subsidized zombification predicted through industry time-series regressions using the first two principal components.
<i>Existing Zombification</i>	Share of zombie firms in an industry at the end of year t .
<i>Sales Growth</i>	Ratio of a firm's sales to one-year lagged sales minus one.
<i>Total Profitability</i>	Ratio of a firm's sales minus COGS minus SG&A expenses minus interest expenses to one-year lagged assets.
<i>Capacity Overhang</i>	Natural log of the ratio of a firm's installed capacity to its optimal capacity estimated from a stochastic frontier model.
<i>Total Value</i>	Peters and Taylor (2017) Total Q.
<i>Patent Count</i>	Count of patents issued to a firm in a year divided by one-year lagged assets.
<i>Citation Count</i>	Count of citations accruing to a firm's issued patents in a year divided by one-year lagged assets.
<i>Tobin's Q</i>	Ratio of a firm's market equity value plus book assets value minus book equity value plus deferred taxes to book value of assets.
<i>Size</i>	Natural log of a firm's total assets.
<i>Cash Flow</i>	Ratio of a firm's EBIT plus depreciation minus R&D expenses to one-year lagged assets.
<i>Stock Return</i>	A firm's forward-looking 36-month cumulative market-adjusted stock return.
<i>State GDP Growth</i>	Annual state-level GDP growth.
<i>State Labor Force</i>	Natural log of the state's labor force.
<i>Regional Inflation</i>	Annual regional inflation.

Panel D: YTS Panel Regression Variables

<i>Establishment Openings</i>	Ratio of a firm's establishment openings to its start-of-year establishments (only establishments with at least 20 workers).
<i>Establishment Closures</i>	Ratio of a firm's establishment closures to its start-of-year establishments (only establishments with at least 20 workers).
<i>Employment Growth</i>	Ratio of a firm's end-of-year total employment to its start-of-year total employment minus one.

Panel E: Clarkson-Orbis Shipping Panel Regression Variables

<i>Shipping Zombie</i>	Indicator variable equal to one if a firm's interest coverage is below one and else zero.
<i>AIV</i>	Shipping-subsector-specific implied stock-return volatility (value-weighted).
<i>Small</i>	Indicator variable equal to one if a firm's sales are below 50 million dollars and else zero.
<i>Age</i>	Number of years since the firm is included in Orbis.
<i>Forward Return</i>	Quarterly return of the forward contract on a shipping-subsector-specific freight rate.
<i>All Ship Investment</i>	Number of all ship purchases scaled by start-of-year number of ships.
<i>New Ship Investment</i>	Number of new ship purchases scaled by start-of-year number of ships.
<i>Used Ship Investment</i>	Number of used ship purchases scaled by start-of-year number of ships.
<i>All Ship Disinvestment</i>	Number of all ship retirements scaled by start-of-year number of ships.
<i>Ship Sales</i>	Number of all ship sales scaled by start-of-year number of ships.
<i>Ship Demolitions</i>	Number of all ship demolitions scaled by start-of-year number of ships.
<i>Expected Zombification^S</i>	Zombification predicted through shipping-subsector-specific time-series regressions using the implied volatility variable.
<i>Size</i>	Natural log of a firm's total assets.
<i>Cash Flow^S</i>	Ratio of the sum of a firm's EBIT and depreciation to one-year lagged assets.

Table C.2. Effect of Zombification on Syndicated Lending Terms

In this table, we report the results from panel regressions of loan-contract terms on a zombie indicator, controls, and industry and time fixed effects. The loan-contract terms are the natural log of a loan's all-drawn-in spread over LIBOR (column (1)); its number of covenants (column (2)); an indicator variable equal to one if it is secured and else zero (column (3)); and an indicator variable equal to one if there is a single lender and else zero (column (4)). While Panel A defines a zombie as a firm with an Altman Z-score below zero and an interest coverage below one (*Standard Zombie*), Panel B additionally requires that a zombie receives subsidized credit (*Subsidized Zombie*). The control variables are the natural log of the borrower's assets (*Size*); the number of years since it first appeared in Compustat (*Age*); its operating income scaled by assets (*Profitability*), its net property, plant, and equipment scaled by assets (*Tangibility*), its market-to-book ratio (*Market-to-Book*), its leverage ratio (*Leverage*), an indicator variable equal to one if the borrower is rated and else zero (*Rated*), the natural log of the outstanding loan amount (*Loan Size*), an indicator variable equal to one if the loan is a term loan and else zero (*Loan Type*), and the natural log of the loan's months-to-maturity (*Loan Maturity*). We include only new term loans and revolvers in our regressions. Industry fixed effects are based on the 50 Hoberg and Phillips (2016) industry definitions. Plain numbers are coefficient estimates, whereas those in square brackets are *t*-statistics computed from standard errors clustered at the borrower and year level. ***, **, and * indicate statistical significance at the 99%, 95%, and 90% confidence level, respectively.

	<i>Spread</i>	<i>Covenants</i>	<i>Collateral</i>	<i>Single Lender</i>
	(1)	(2)	(3)	(4)
Panel A: Zombie Indicator Based on Z-Score and Interest Coverage (Standard Zombie)				
<i>Standard Zombie</i>	-0.106*** [-3.18]	-0.327*** [-4.73]	-0.092*** [-3.67]	0.065** [2.28]
<i>Size</i>	-0.141*** [-14.40]	-0.097*** [-5.42]	-0.081*** [-14.43]	-0.009 [-1.30]
<i>Age</i>	-0.005*** [-8.02]	0.000 [0.00]	-0.005*** [-11.80]	0.001** [2.68]
<i>Profitability</i>	-1.218*** [-11.54]	0.979*** [7.82]	-0.498*** [-9.62]	-0.163*** [-3.88]
<i>Tangibility</i>	-0.095 [-1.53]	-0.061 [-0.92]	-0.100*** [-3.34]	0.064** [1.98]
<i>Market-to-Book</i>	-0.092*** [-9.55]	-0.056*** [-4.23]	-0.054*** [-7.45]	0.018*** [3.58]
<i>Leverage</i>	0.696*** [16.71]	-0.148* [-1.92]	0.365*** [11.21]	-0.151*** [-5.80]
<i>Rated</i>	0.108*** [5.88]	-0.085*** [-3.32]	0.074*** [5.12]	0.051*** [4.49]
<i>Loan Size</i>	-0.057*** [-5.52]	0.063*** [5.91]	-0.003 [-0.64]	-0.157*** [-18.92]
<i>Loan Type</i>	0.301*** [25.14]	0.035** [2.60]	0.123*** [14.50]	-0.020 [-1.62]
<i>Loan Maturity</i>	-0.061*** [-3.51]	-0.083 [-1.48]	0.042*** [4.58]	-0.062*** [-5.16]
Industry FEs	Yes	Yes	Yes	Yes
Year FEs	Yes	Yes	Yes	Yes
R ²	0.473	0.238	0.260	0.563
Observations	39,884	42,438	42,438	10,197

	<i>Spread</i>	<i>Covenants</i>	<i>Collateral</i>	<i>Single Lender</i>
	(1)	(2)	(3)	(4)
Panel B: Zombie Indicator Based on Z-Score, Interest Coverage, and Subsidized Debt (Credit-Subsidized Zombie)				
<i>Subsidized Zombie</i>	-0.244*** [-4.35]	-0.338*** [-4.00]	-0.109*** [-3.76]	0.151** [2.47]
<i>Size</i>	-0.143*** [-14.49]	-0.102*** [-5.44]	-0.081*** [-13.20]	0.003 [0.40]
<i>Age</i>	-0.005*** [-7.98]	0.000 [-0.57]	-0.005*** [-11.84]	0.001** [2.36]
<i>Profitability</i>	-1.328*** [-11.76]	1.166*** [8.32]	-0.492*** [-9.50]	-0.182*** [-3.72]
<i>Tangibility</i>	-0.107* [-1.80]	-0.079 [-1.18]	-0.113*** [-3.54]	0.060** [2.23]
<i>Market-to-Book</i>	-0.100*** [-9.42]	-0.058*** [-4.56]	-0.058*** [-7.01]	0.019*** [3.24]
<i>Leverage</i>	0.680*** [17.08]	-0.241*** [-3.81]	0.358*** [9.90]	-0.102*** [-3.77]
<i>Rated</i>	0.118*** [7.02]	-0.091*** [-3.43]	0.081*** [5.68]	0.037*** [3.24]
<i>Loan Size</i>	-0.054*** [-5.21]	0.064*** [5.73]	-0.002 [-0.43]	-0.150*** [-13.64]
<i>Loan Type</i>	0.302*** [24.18]	0.040*** [2.98]	0.125*** [13.66]	-0.023 [-1.03]
<i>Loan Maturity</i>	-0.046 [-1.58]	-0.107* [-1.78]	0.053*** [4.84]	-0.080*** [-7.59]
Industry Fixed Effects	Yes	Yes	Yes	Yes
Year Fixed Effects	Yes	Yes	Yes	Yes
R ²	0.492	0.222	0.279	0.528
Observations	35,047	37,215	37,215	7,796

Table C.3. Financial Effects of Zombie Firms on Non-Zombie Firms' Liquidity, Payouts, and Financing: Public Firms Sample

In this table, we report the results from panel regressions of public firms' financing outcome variables on expected zombification (*Expected Zombification*), controls, and firm fixed effects. Our outcome variables are cash savings over the past year, or the annual log change in cash and cash equivalents (columns (1) and (2)), inventory, or inventories divided by lagged assets (columns (3) and (4)), total payouts in the form of dividends and repurchases all divided by lagged assets (columns (5) and (6)), short-term debt financing, or the change in current debt over lagged assets (columns (7) and (8)), and equity financing, or the change in preferred stock plus the change in common equity plus the change in minority interest, minus the change in retained earnings, all divided by lagged assets (columns (9) and (10)). To compute *Expected Zombification*, we separately run twelve-year rolling-window regressions of a zombie indicator on either the first (odd-numbered columns) or the first two (even-numbered) principal components extracted from our uncertainty proxies, controls, and firm fixed effects per industry. While the zombification variables in Panel A choose as zombies those firms with an Altman Z-score below zero and an interest coverage below one (*Standard Zombie*), those in Panel B additionally require that zombies receive subsidized credit (*Subsidized Zombie*). The controls include an indicator variable equal to one if one-year-lagged firm value is below \$50 million and else zero (*Small Firm*), an indicator variable equal to one if the firm's one-year-lagged age is below ten years and else zero (*Young Firm*), and one-year-lagged GDP growth (*GDP Growth*). We use the 50 Hoberg and Phillips (2016) industry classification to define our industries. We next combine the slope estimates of the principal component(s) with their end-of-window values to calculate *Expected Zombification*. Our controls are a firm's one-year lagged assets (*Size*), its one-year lagged sum of EBIT, depreciation, and R&D expenses scaled by two-year lagged assets (*Cash Flow*), its compounded stock return over the subsequent 36 months (*Stock Return*), its one-year-lagged Tobin's Q (*Tobin's Q*), and macro variables consisting of *State GDP Growth*, *State Labor Force*, and *Regional Inflation* (coefficients omitted for brevity). Plain numbers are coefficient estimates, whereas those in square brackets are *t*-statistics computed from standard errors clustered at the firm level. ***, **, and * indicate statistical significance at the 99%, 95%, and 90% confidence level, respectively.

	Financing Variable											
	Cash Savings		Inventory		Total Payouts		Debt Financing		Equity Financing			
	# Principal Components	One	Two	# Principal Components	One	Two	# Principal Components	One	Two	# Principal Components	One	Two
	(1)	(2)	(3)	(4)	(5)	(6)	(7)	(8)	(9)	(10)		
Panel A: Zombie Indicator Based on Z-Score and Interest Coverage (Standard Zombie)												
<i>Expected Zombification</i>	0.754***	0.889***	-0.014	-0.009	-0.122***	-0.117***	-0.058***	-0.050***	0.003	0.046		
	[4.17]	[4.29]	[-1.64]	[-0.88]	[-10.06]	[-8.37]	[-4.75]	[-3.64]	[0.08]	[0.83]		
<i>Size</i>	-0.139***	-0.142***	-0.011***	-0.011***	0.009***	0.010***	-0.003***	-0.003***	-0.083***	-0.083***		
	[-12.55]	[-12.81]	[-8.99]	[-8.98]	[9.81]	[10.38]	[-4.36]	[-4.08]	[-16.81]	[-16.86]		
<i>Cash Flow</i>	0.004	0.012	0.009*	0.009*	0.043***	0.042***	0.011*	0.011*	-0.190***	-0.190***		
	[0.06]	[0.16]	[1.84]	[1.82]	[8.85]	[8.63]	[1.79]	[1.71]	[-5.64]	[-5.64]		
<i>Stock Return</i>	0.064***	0.064***	0.001*	0.001*	0.001**	0.001**	-0.003***	-0.003***	-0.005**	-0.005**		
	[8.31]	[8.31]	[1.89]	[1.86]	[2.51]	[2.39]	[-5.36]	[-5.43]	[-2.31]	[-2.36]		
<i>Tobin's Q</i>	0.032***	0.031***	-0.001	-0.001	0.009***	0.009***	0.001	0.001	0.037***	0.038***		
	[4.41]	[4.32]	[-1.63]	[-1.57]	[10.57]	[10.77]	[1.04]	[1.25]	[8.15]	[8.18]		
Macro Controls	Yes	Yes	Yes	Yes	Yes	Yes	Yes	Yes	Yes	Yes	Yes	Yes
Firm FEs	Yes	Yes	Yes	Yes	Yes	Yes	Yes	Yes	Yes	Yes	Yes	Yes
R ²	0.02	0.02	0.03	0.03	0.06	0.06	0.01	0.01	0.08	0.08	0.08	0.08
Observations	26,426	26,426	26,330	26,330	25,050	25,050	26,577	26,577	26,577	26,577	26,577	26,577

	Financing Variable											
	Cash Savings		Inventory		Total Payouts		Debt Financing		Equity Financing			
	# Principal Components	One	Two	# Principal Components	One	Two	# Principal Components	One	Two	# Principal Components	One	Two
	(1)	(2)	(3)	(4)	(5)	(6)	(7)	(8)	(9)	(10)		
Panel B: Zombie Indicator Based on Z-Score, Interest Coverage, and Subsidized Credit (Credit-Subsidized Zombie)												
<i>Expected Zombification</i>	0.806**	0.762**	0.015	0.025	-0.175***	-0.153***	-0.045*	-0.061*	0.046	-0.114		
	[2.29]	[2.04]	[0.85]	[1.22]	[-6.84]	[-5.54]	[-1.95]	[-2.31]	[0.41]	[-0.87]		
<i>Size</i>	-0.125***	-0.126***	-0.010***	-0.010***	0.008***	0.008***	-0.004***	-0.004***	-0.086***	-0.086***		
	[-10.43]	[-10.45]	[-8.42]	[-8.43]	[8.10]	[8.26]	[-4.29]	[-4.30]	[-16.52]	[-16.56]		
<i>Cash Flow</i>	0.109	0.110	0.007*	0.007*	0.037***	0.037***	0.008	0.008	-0.128***	-0.128***		
	[1.39]	[1.42]	[1.70]	[1.71]	[7.06]	[7.05]	[1.09]	[1.08]	[-3.63]	[-3.63]		
<i>Stock Return</i>	0.061***	0.061***	0.001*	0.001*	0.001*	0.001	-0.003***	-0.003***	-0.004*	-0.004*		
	[7.52]	[7.59]	[1.72]	[1.72]	[1.82]	[1.65]	[-5.19]	[-5.21]	[-1.95]	[-1.92]		
<i>Tobin's Q</i>	0.029***	0.029***	0.000	0.000	0.010***	0.010***	0.001*	0.001*	0.038***	0.038***		
	[3.76]	[3.69]	[-0.26]	[-0.24]	[10.62]	[10.88]	[1.95]	[1.95]	[7.98]	[7.89]		
Macro Controls	Yes	Yes	Yes	Yes	Yes	Yes	Yes	Yes	Yes	Yes	Yes	Yes
Firm FEs	Yes	Yes	Yes	Yes	Yes	Yes	Yes	Yes	Yes	Yes	Yes	Yes
R ²	0.01	0.01	0.03	0.03	0.06	0.05	0.01	0.01	0.08	0.08	0.08	0.08
Observations	23,244	23,244	23,118	23,118	21,910	21,910	23,365	23,365	23,365	23,365	23,365	23,365

Table C.4. Real Effects of Zombie Firms on Non-Zombie Firms' Investment: Manufacturing Firms Sample

In this table, we report the results from panel regressions of public firms' investment on expected zombification (*Expected Zombification*), controls, and firm fixed effects. We restrict the sample to firms in the manufacturing, mining, and construction industries (SIC 1000—3999). While we use CAPEX scaled by assets as investment proxy in columns (1) to (4), we use the sum of CAPEX, M&A expenses, and marketing expenses scaled by assets in columns (5) to (8). To compute *Expected Zombification*, we separately run twelve-year rolling-window regressions of a zombie indicator on either the first (odd-numbered columns) or the first two (even-numbered columns) principal components extracted from our uncertainty proxies, controls, and firm fixed effects per industry. While the zombification variables in columns (1) to (4) choose as zombies those firms with an Altman Z-score below zero and an interest coverage below one (*Standard Zombie*), those in columns (5) to (8) additionally require that zombies receive subsidized credit (*Subsidized Zombie*). The controls include an indicator variable equal to one if one-year-lagged firm value is below \$50 million and else zero (*Small Firm*), an indicator variable equal to one if the firm's one-year-lagged age is below ten years and else zero (*Young Firm*), and one-year-lagged GDP growth (*GDP Growth*). We use the 50 Hoberg and Phillips (2016) industry classification to define our industries. We next combine the slope estimates of the principal component(s) with their end-of-window values to calculate *Expected Zombification*. Our controls are a firm's one-year lagged assets (*Size*), its one-year lagged sum of EBIT, depreciation, and R&D expenses scaled by two-year lagged assets (*Cash Flow*), its compounded stock return over the subsequent 36 months (*Stock Return*), its one-year-lagged Tobin's Q (*Tobin's Q*), and macro variables consisting of *State GDP Growth*, *State Labor Force*, and *Regional Inflation* (coefficients omitted for brevity). Plain numbers are coefficient estimates, whereas those in square brackets are *t*-statistics computed from standard errors clustered at the firm level. ***, **, and * indicate statistical significance at the 99%, 95%, and 90% confidence level, respectively.

Zombification Proxy Based On:																									
Z-Score and Interest Coverage (Standard Zombie)			Z-Score, Interest Coverage, and Subsidized Credit (Credit-Subsidized Zombie)			Investment Proxy			Comprehensive																
Investment Proxy			Comprehensive			CAPEX			Comprehensive																
CAPEX			Comprehensive			CAPEX			Comprehensive																
# Principal Components			# Principal Components			# Principal Components			# Principal Components																
One	Two	(1)	One	Two	(2)	One	Two	(3)	One	Two	(4)	One	Two	(5)	One	Two	(6)	One	Two	(7)	One	Two	(8)		
<i>Expected Zombification</i>	-0.088***	[-5.59]	-0.132***	[-6.92]	-0.260***	[-7.13]	-0.262***	[-6.15]	-0.103***	[-3.91]	-0.077**	[-2.59]	-0.300***	[-4.54]	-0.276***	[-3.72]									
<i>Size</i>	-0.013***	[-10.70]	-0.013***	[-10.63]	-0.033***	[-10.82]	-0.032***	[-10.60]	-0.014***	[-10.95]	-0.014***	[-10.90]	-0.039***	[-11.62]	-0.040***	[-11.63]									
<i>Cash Flow</i>	0.058***	[8.52]	0.057***	[8.45]	0.130***	[9.85]	0.127***	[9.73]	0.061***	[7.81]	0.061***	[7.80]	0.129***	[8.97]	0.129***	[8.97]									
<i>Stock Return</i>	-0.003***	[-4.84]	-0.003***	[-4.79]	-0.009***	[-6.30]	-0.009***	[-6.35]	-0.004***	[-5.31]	-0.004***	[-5.38]	-0.011***	[-7.01]	-0.011***	[-7.11]									
<i>Tobin's Q</i>	0.007***	[9.17]	0.007***	[9.24]	0.016***	[8.28]	0.016***	[8.40]	0.008***	[9.16]	0.008***	[9.29]	0.019***	[8.70]	0.019***	[8.76]									
Macro Controls	Yes	Yes	Yes	Yes	Yes	Yes	Yes	Yes	Yes	Yes	Yes	Yes	Yes	Yes	Yes	Yes									
Firm FEs	Yes	Yes	Yes	Yes	Yes	Yes	Yes	Yes	Yes	Yes	Yes	Yes	Yes	Yes	Yes	Yes									
R ²	0.10	0.10	0.10	0.10	0.06	0.06	0.06	0.06	0.10	0.10	0.10	0.10	0.07	0.07	0.07										
Observations	14,957	14,957	14,957	14,957	14,957	14,957	14,957	14,957	13,079	13,079	13,079	13,079	13,079	13,079	13,079										

Table C.5. Real Effects of Zombie Firms on Non-Zombie Firms' Disinvestment: Manufacturing Firms Sample

In this table, we report the results from panel regressions of public firms' disinvestment on existing zombification (*Existing Zombification*), control variables, and firm fixed effects. We restrict the sample to firms in the manufacturing, mining, and construction industries (SIC 1000–3999). We use the sale of property, plant, and equipment (PPE) scaled by PPE to measure disinvestment. To compute *Expected Zombification*, we separately run twelve-year rolling-window regressions of a zombie indicator on either the first (odd-numbered columns) or the first two (even-numbered) principal components extracted from our uncertainty proxies, controls, and firm fixed effects per industry. While the zombification variables in columns (1) and (2) choose as zombies those firms with an Altman Z-score below zero and an interest coverage below one (*Standard Zombie*), those in columns (3) and (4) additionally require that zombies receive subsidized credit (*Subsidized Zombie*). The controls include an indicator variable equal to one if one-year-lagged firm value is below \$50 million and else zero (*Small Firm*), an indicator variable equal to one if the firm's one-year-lagged age is below ten years and else zero (*Young Firm*), and one-year-lagged GDP growth (*GDP Growth*). We use the 50 Hoberg and Phillips (2016) industry classification to define our industries. We next combine the slope estimates of the principal component(s) with their end-of-window values to calculate *Expected Zombification*. Our controls are a firm's one-year lagged assets (*Size*), its one-year lagged sum of EBIT, depreciation, and R&D expenses scaled by two-year lagged assets (*Cash Flow*), its compounded stock return over the subsequent 36 months (*Stock Return*), its one-year-lagged Tobin's Q (*Tobin's Q*), and macro variables consisting of *State GDP Growth*, *State Labor Force*, and *Regional Inflation* (coefficients omitted for brevity). Plain numbers are coefficient estimates, whereas those in square brackets are *t*-statistics computed from standard errors clustered at the firm level. ***, **, and * indicate statistical significance at the 99%, 95%, and 90% confidence level, respectively.

	<i>Disinvestment Proxy is Sale of PPE</i>			
	<i>Zombification Proxy Based On:</i>			
	Z-Score and Interest Coverage (Standard Zombie)		Z-Score, Interest Coverage, and Subsidized Credit (Credit-Subsidized Zombie)	
	# Principal Components		# Principal Components	
	One	Two	One	Two
	(1)	(2)	(3)	(4)
<i>Expected Zombification</i>	-0.076*** [-4.66]	-0.072*** [-3.93]	-0.090*** [-3.14]	-0.095*** [-3.14]
<i>Size</i>	-0.003 [-1.51]	-0.003 [-1.39]	-0.002 [-1.09]	-0.002 [-1.19]
<i>Cash Flow</i>	-0.016* [-1.89]	-0.017** [-1.97]	-0.024*** [-4.15]	-0.024*** [-4.19]
<i>Stock Return</i>	0.000 [-0.46]	0.000 [-0.45]	0.000 [0.05]	0.000 [0.00]
<i>Tobin's Q</i>	-0.001 [-1.75]	-0.001 [-1.59]	-0.001 [-1.38]	-0.001 [-1.34]
Macro Controls	Yes	Yes	Yes	Yes
Firm FEs	Yes	Yes	Yes	Yes
R ²	0.01	0.01	0.01	0.01
Observations	11,141	11,141	9,600	9,600