

A PRACTICAL TOOLKIT FOR CLINICIANS TO LOCATE BEST EVIDENCE



Sandra Kendall¹, Michelle Ryu¹, Chris Walsh¹

INTRODUCTION

Sinai Health System (SHS) is an internationally recognized academic health sciences centre fully affiliated with the University of Toronto. With more than 28,809 admissions a year, clinicians at SHS are often challenged with locating the best available evidence for patient care. The overwhelming number of electronic resources available, coupled with long hours of clinical work in multiple locations, our library recognizes how clinicians may be prevented to easily and seamlessly seek reliable information in an efficient and timely manner to be used to improve patient outcomes.

OBJECTIVE

Our goal is to provide a simple, practical teaching tool to help clinicians easily find quality health information from the vast offerings of publishers.

METHODS

The SHS Library created a toolkit* that groups electronic resources into tiers based on the hierarchy of evidence, in a step-by-step approach. The integration of the 6S Pyramid has transformed the structure and rationale of the EBM Toolkit tiers.

The SHS EBM Toolkit lists key electronic resources available through the library. Available supplementary mobile application options for most of the resources are indicated in the legend.

For more information, visit our publication using the QR code or visit: <http://www.cfp.ca/content/63/6/490>.



RECENT REVISIONS

The newly revised toolkit contains updates to electronic resources and an image legend that indicates which resources are open access, as well as which resources are accessible via supplementary mobile apps.

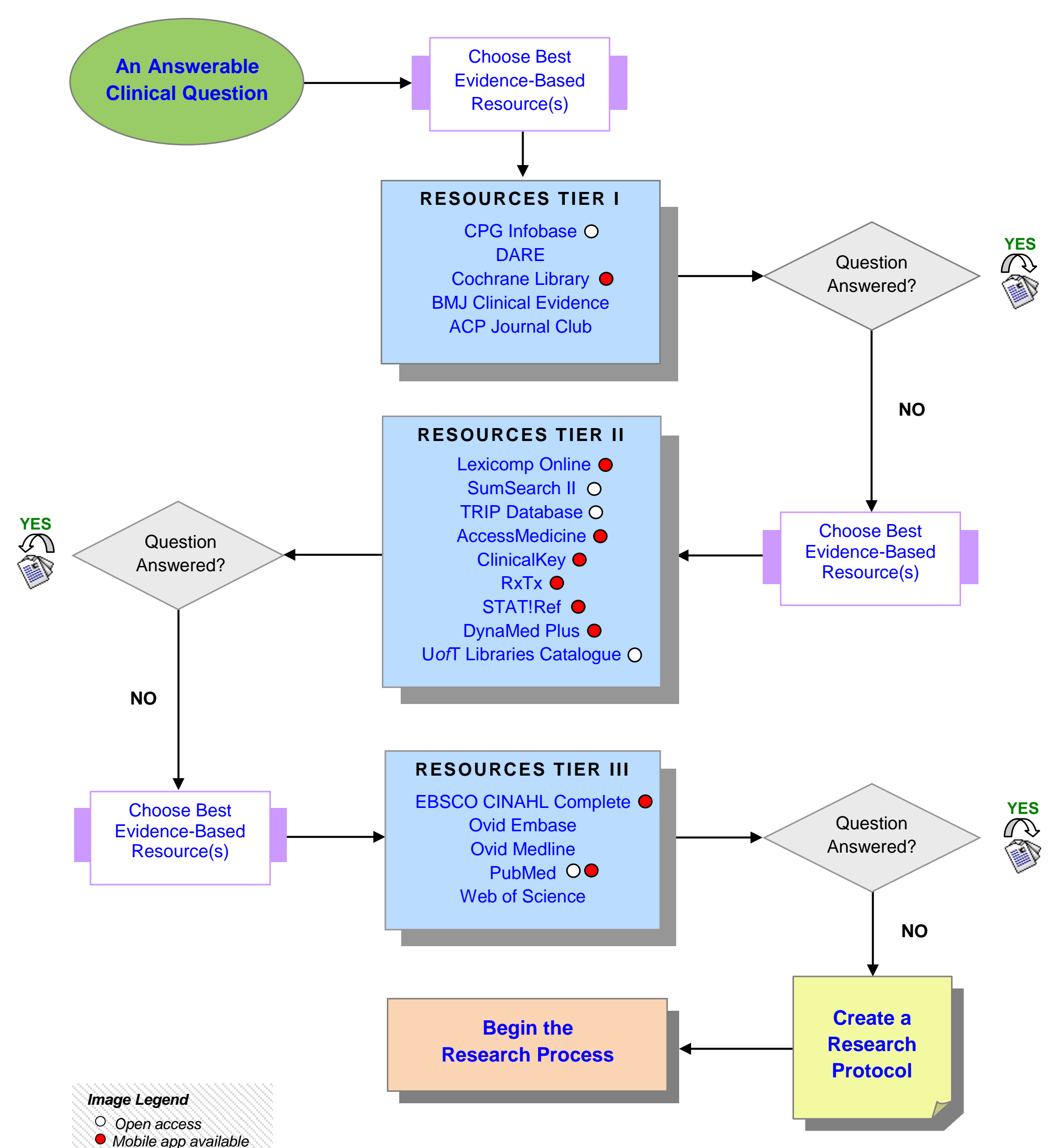
CLINICAL OUTCOMES

Since 2008, the EBM Resources Toolkit has been incorporated into the teachings of the College of Physicians and Surgeons of Ontario, Ministry of Public Health, University of Qatar and a number of medical libraries across Canada and worldwide.

The toolkit provides added value for health care professionals by evaluating, organizing, and summarizing electronic resources that support everyday clinical queries regarding patient care.

The toolkit works to ensure that high-quality information is available for clinicians. Subsequently this toolkit saves time and reduces costs and is intended to improve patient care.

THE EBM RESOURCES TOOLKIT



LOOKING FORWARD

The toolkit continues to add value to our hospitals. The SHS Library encourages other libraries and institutions to adapt the toolkit for their users. In the future, this toolkit will be revised to tailor to the research needs of nursing and allied health staff.

REFERENCES

1. Bishop L, Duggan N, Flynn H. Teaching family medicine residents how to answer clinical questions using QUIPs. *Can Med Educ J* 2013;4(2):e4-9.
2. Kendall S. Evidence-based resources simplified. *Can Fam Physician* 2008;54:241-3.
3. Yaman H, Yavuz E, Er A, Vural R, Albayrak Y, Yardimci A, et al. The use of mobile smart devices and medical apps in the family practice setting. *J Eval Clin Pract* 2016;22(2):290-6.
4. DiCenso A, Bayley L, Haynes RB. ACP Journal Club. Editorial: accessing preappraised evidence: fine-tuning the 5S model into a 6S model. *Ann Intern Med* 2009;151(6):JC3-2, JC3-3.
5. Birnbaum ML. Guidelines, algorithms, critical pathways, templates, and evidence-based medicine. *Prehosp Disaster Med* 1999;14(3):114-5.
6. Flemming K. Asking answerable questions. *Evid Based Nurs* 1998;1(2):36-7.
7. Banks DE, Shi R, Timm DF, Christopher KA, Duggar DC, Comegys M, et al. Decreased hospital length of stay associated with presentation of cases at morning report with librarian support. *J Med Libr Assoc* 2007;95(4):381-7.

¹ Author Affiliations: Sinai Health System Libraries, Toronto, Ontario. Contact Information: library.msh@sinaihealthsystem.ca

* Kendall S, Ryu M, Walsh C. Evidence-based medicine resources tool kit revisited. *Can Fam Phys*. 2017, 63(6):490-2.